

5-28 May 2018

**ARTISTS' OPEN STUDIOS
AND EXHIBITIONS
ACROSS OXFORDSHIRE**

OXFORDSHIRE

art

WEEKS

art

www.artweeks.org

**FREE FESTIVAL GUIDE
& ART DIRECTORY**

'Tucked away in Summertown,
The North Wall is one of the best
Oxford venues to find new and
exciting work touring nationally.'

Angie Johnson, The Oxford Times



St Edward's
is the principal
sponsor of
The North Wall's
innovative, nationally-
recognised public programme.

www.stedwardsoxford.org
www.thenorthwall.com



Harriet and Rob Fraser:

The Long View

Photography, poetry and installations inspired by slow time with trees

5 - 26 May 2018



The North Wall, South Parade, Oxford OX2 7JN

OXFORDSHIRE ART AND CRAFT ORGANISATIONS



The Oxford Art Society was founded in 1891 and is an umbrella for accomplished artists with diverse and exciting styles living in Oxfordshire, many of whom also exhibit nationally or internationally. We hold regular exhibitions, and welcome submissions towards membership at our annual Open Exhibition. Look for the initials **OAS** in this guide to find members' work. For more information visit www.oxfordartsociety.co.uk



The Oxfordshire Craft Guild draws together designer-makers representing a wide range of traditional and contemporary crafts, and holds temporary and permanent exhibitions throughout the county. Membership, which is by selection, is a sign of the finest design ability and highest quality craftsmanship. Look out for the initials **OCG** in this guide to find Guild Members' work. For further information go to www.ocg.co.uk or www.facebook.com/oxfordshirecraftguild.



West Ox Arts is a lively association of artists and art enthusiasts, many of whom take part in exhibitions alongside artists invited from across the UK. Our Gallery is an inspiring, light-filled venue that sells a wide range of contemporary, high quality art and offers various workshops, demonstrations and special events throughout the year. We are situated in the first floor of Bampton's Town Hall in the Market Square. For more information or to become a member of **WOA** visit www.westoxarts.com. You can also find us on facebook at www.facebook.com/westoxarts.

Our heartfelt thanks

Artweeks is a not-for-profit organisation and relies upon the generous support of many people to whom we're most grateful as we bring this celebration of the visual arts to you.

These include:

Patrons: Will Gompertz, Mark Haddon, Janina Ramirez

Board members: Anna Dillon, Wendy Newhofer, Hannah Newton (Chair), David Pollock, Jim Robinson, Susan Williamson, Robin Wilson and Caroline Harben.

Volunteer area coordinators: Maggie Bicknell, Jennifer Crowshaw, Ella Hendy, Patsy Jones, Rahima Kenner, Susan Moxley, Marieke O'Connor, Tara Parker-Woolway, Graham Perryman, Francesca Shakespeare, Sarah Smith, Dougie Simpson, Maureen Sparling, Philippa Stacey, Jane Tomlinson, Andrew Wildman, & Helen White.

And all those other individuals and collaborating organisations who help make Artweeks a success including Janet Brown, Jill Colchester, Stuart Lafferty, Melissa Orrom Swan, Jill Rayner, Richard Shock, Alun Ward, Appleton Christmas Barn, Cornerstone Arts Centre, Experience Oxfordshire, Modern Art Oxford, OUP, OX magazine, Oxfordshire Library Service, The Ashmolean, The Jam Factory, The Mill Banbury, The Oxford Times, and many others.

Key to abbreviations

| | |
|-------------------|----|
| Wheelchair access | W |
| Open Studio | OS |
| Demonstrations | D |
| Refreshments | R |
| Teacher | T |
| Parking | P |
| Non-selling | NS |

- Oxford Art Society OAS
- Oxfordshire Craft Guild OCG
- Oxford Printmakers Co-op OPC
- West Oxfordshire Arts WOA

Trudi James



Special events: April & May

| | |
|---|-----------|
| | 16 |
| <hr/> | |
| North & West Oxfordshire: Sat 5 – Sun 13 May | 23 |
| Bicester and villages | 24 |
| Kidlington | 27 |
| Eynsham | 29 |
| Woodstock | 30 |
| Witney & villages | 31 |
| Bampton | 33 |
| Burford & Wychwoods | 37 |
| Chadlington | 39 |
| Charlbury | 42 |
| Chipping Norton | 45 |
| Banbury & villages | 48 |

Oxford City: Sat 12 – Sun 20 May

| | |
|-----------------------|-----------|
| | 55 |
| Summertown | 56 |
| Wolvercote & Wytham | 61 |
| West Oxford | 63 |
| City centre & Jericho | 66 |
| South Oxford | 73 |
| East Oxford | 75 |
| Headington | 82 |

South Oxfordshire: Sat 19 - Mon 28 May

| | |
|------------------------------|-----------|
| | 86 |
| Thame, Wheatley & villages | 87 |
| Wallingford & The Wittenhams | 89 |
| Henley and Goring | 94 |
| Didcot | 95 |
| Abingdon & villages | 97 |
| Wantage | 101 |
| Faringdon | 103 |

Index of artists

| | |
|---|------------|
| | 106 |
| Index of galleries and large group exhibitions | 111 |
| Interested in taking part next year | 6 |

Although the majority of venues within each Artweeks region open only during their regional dates, you'll find some artists exhibiting for a longer period of time. Browse the listings to take advantage of these additional days or use our search facility at artweeks.org/festival/search

Artist call out: interested in taking part next year?

ARE YOU

- A passionate artist or designer-maker who is keen to share your skills and your story and inspire others?
- An emerging artist looking to build your profile?
- An enthusiastic amateur who'd like to develop your art with feedback and sales?
- A seasoned professional looking for contacts, commissions and a bigger market?

Many full time artists including glass artist **Wendy Newhofer** and sculptor **Chris Townsend** and took their first steps to becoming a professional artist with an Artweeks exhibition.



'I am enormously grateful to Oxfordshire Artweeks which enabled me, as a beginner, to share my work with the public. The positive feedback I got on my first Artweeks exhibition encouraged me to go on working and making. Without Artweeks, I don't think I would have had the courage to launch myself as a professional jeweller.'

Leonie Bennett



'I found out in my first year as a member of Artweeks that it is more than just showing work in one's studio: it is about contact with people, recognition by the public and being seen regularly so people become familiar with one's work. Being part of Artweeks led me to other places in that first year as a full time artist and I have now exhibited further afield on the strength of the confidence Artweeks gave me.' **Robert Strange**

Look out for Artweeks **TAKING PART** events in the autumn to hear more and ask questions. You can choose to exhibit from home, or find a local artist group/venue. Then register for membership of Oxfordshire Artweeks and submit exhibition details as either an individual artist or as part of a group from October. All details and payments must be submitted by **31st December**.

www.artweeks.org/artists



ABINGDON

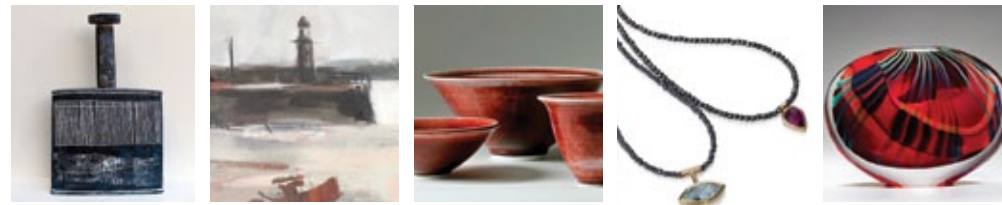
Abingdon School
01235 849041
Abingdon Prep School
01865 391570

abingdon.org.uk
Independent education for boys from 4-18 years

Art in Action Gallery

SHOWCASING THE UNIQUE

Open daily from 10.00 a.m.



■ Ceramics ■ Glass ■ Jewellery ■ Paintings ■ Prints ■ Sculpture

AMERICA'S COOL MODERNISM

O'KEEFE TO HOPPER



ASHMOLEAN

BOOK NOW 23 Mar–22 Jul
www.ashmolean.org

JOIN US FOR THE
AMERICAN
COOL FESTIVAL
MAY 2018



MAGDALEN COLLEGE SCHOOL
INDEPENDENT DAY SCHOOL FOR BOYS 7 - 18 AND SIXTH FORM GIRLS

Art, Music, Drama
& Sport for All



OPEN AFTERNOONS

Junior School: Tuesday 19 June
Senior School: Thursday 21 June
Book via website: mcsoxford.org

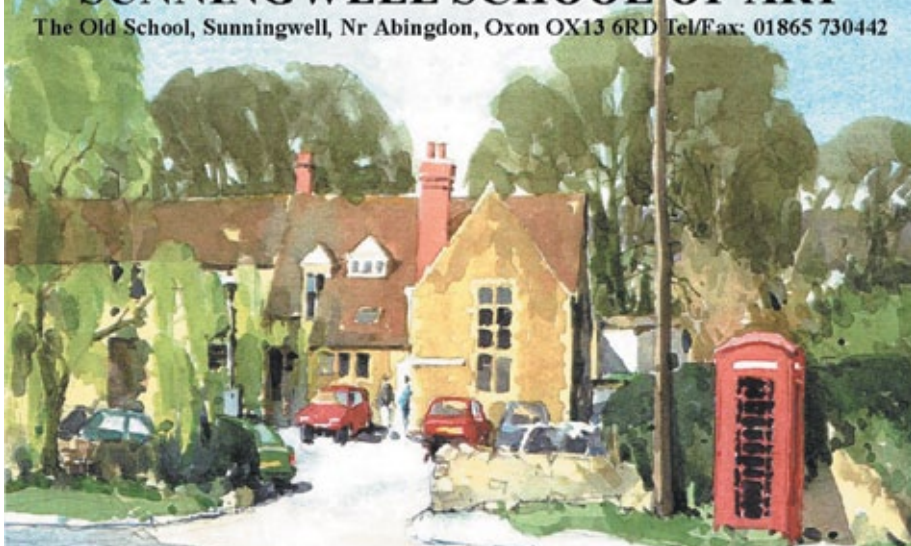
Founder & Lead Sponsor of

OXFORD 23 June - 7 July
FESTIVAL
of the **ARTS**

www.artsfestivaloxford.org

SUNNINGWELL SCHOOL OF ART

The Old School, Sunningwell, Nr Abingdon, Oxon OX13 6RD Tel/Fax: 01865 730442



Professional tuition in a range of courses including:
Painting; Drawing; Sculpture; Pottery; Children's Courses; Short Courses.
 email: sunningwell@artschool.org.uk check out our web site: www.artschool.org.uk



Ask a man for money and he'll feel better for the rest of the day.
 Convince a man to help and he'll change the world forever.

I'm Mike Hill and I help charitable organisations change the way they raise money.

Instead of 'rattling the tin' I show them how to foster long-term relationships with engaged donors who share their vision.

As a behavioural scientist I know that people have a fundamental need to give. It's my mission to help organisations and donors alike by matching people to the causes they believe in. If you're tired of ceaseless fundraising that never

generates enough and takes all your resource, I can help.

Mike Hill
 Charity Development

DO GOOD. DO MORE. DO BETTER.

t: 07585 508097 www.mikehillcharity.co.uk



The Dragon School, Oxford

Proud to be part of Oxfordshire Artweeks

“The spiritual, moral, social and cultural development of the pupils is excellent”

Independent Schools Inspectorate Inspection Report, November 2014

TO ARRANGE A VISIT PLEASE CONTACT THE ADMISSIONS TEAM
 T: +44(0)1865 315405
 E: admissions@dragonschool.org
 Dragon School, Oxford



Dragon School Oxford www.dragonschool.org

Artwork from Year 8 (A Block) Scholars, 2017



“Music, drama, art and related technologies as well as students' written work show imagination and creativity”

Independent Schools Inspectorate report



D'OVERBROECK'S

An independent, co-educational school in Oxford for ages 11-18

For more information or to arrange a visit please call Lynne Berry on 01865 688 600 or email lynne.berry@doverbroecks.com

www.doverbroecks.com

Artweeks at the **ASHMOLEAN**

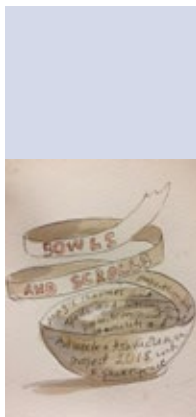
Bowls and Scrolls:

free drop-in family event

Saturday 28th April 1-4pm

The Ashmolean, Beaumont St, Oxford OX1 2PH

Children are invited to come and create incantations, amulets and magic charms inspired by objects from The Ashmolean collections. Join local artist Francesca Shakespeare to coil scrolls into bowls for a collective artwork to be exhibited amongst artefacts in the Ashmolean during Artweeks.



The ninth Jericho Lecture: Art Today - What Touches Your Soul? Tuesday 15th May at 7.30pm

Presented by Johannes von Stumm, an internationally-acclaimed sculptor, President Royal British Society of Sculptors 2009-2012 and President, Oxford Art Society. There is no facility to pre-book this free event so please arrive at St Barnabas Church in good time to ensure your seat. See page 16 for further details.



Andrew Harrison

The Mary Moser Award

This annual award was established to honour Mary Moser's commitment to Artweeks and to help develop the career of a professional artist who has taken up art as a second career later in life.

Previous winners include:

Andrew Harrison, Chipping Norton & Witney (sculpture; venues 56 & 137)

Caroline Chappell, Chipping Norton (painting; venue 139)

Martin Smith, Headington & Summertown (sculpture; venues 191 and 347)

Caroline Meynell, Summertown, Oxford (painting; venue 188)

Crabby Taylor, Wilcote near Charlbury (ceramics; venue 52)

Wendy Newhofer, Jericho, Oxford (glass art; venue 261)

Richard Shock, North Oxford (woodturning; venue 205)

Jane Duff, Little Wittenham (painting; venue 385)

Introducing Elaine Kazimierczuk

Although art was her first love, because Elaine was in the top class at grammar school she had to study Latin instead of art, however much she pleaded.

'My creative juices always bubbled just below the surface in one way or another though,' she smiles. 'However it wasn't until about three years ago that I was finally able to start painting full time and set out to become a professional artist.'

Today, her large abstracted paintings of woodlands and hedgerows burst with colour and flair: they capture the chaotic array of vegetation in a landscape, the intricate assembly of wild beauty, deep shadows and the play of light and each evokes a moment or an experience, for example, the smell of vegetation, the sound of a quiet clearing.



You can see Elaine's Artweeks exhibition on Oxford's Osney Island (venue 235) or visit her studio at Magdalen Road Studios (venue 309) in East Oxford.



Two Headington Painters

www.janestrother.co.uk
Jane Strother
 Ella Clocksin
 www.ellaclocksins.com

- Visit two professional studio
- Artweeks exhibitions
- Five minutes apart
- Same opening hours

ARDINGTON SCHOOL OF CRAFTS

Short courses and workshops in a wide range of traditional and contemporary arts & crafts

www.ardingtonschool.com
 simon@ardingtonschool.com
 01235 833433



Twist is an approachable and personal service that allows both new and experienced collectors the opportunity to discover talented British artists from a carefully selected portfolio.

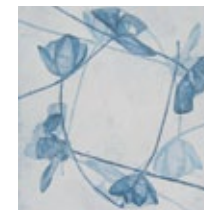
TWIST
 YOUR ART



Benedict Ramos



Rebecca McLynn



Melanie Goemans



Graeme Hawes

Twist will be exhibiting a selection of the Twist Art Consultancy portfolio of artists and designers.

Twist @ Sinolink Gallery
 11 St Clement's Street Oxford OX4 1AB
 Friday 11th–Sunday 20th May
 Monday–Thursday 10–2pm
 Friday–Saturday 10–7pm Sunday 12–5pm

OXFORD PRINTMAKERS' CO-OPERATIVE



CELEBRATING 40 YEARS WITH AN EXHIBITION OF WORK BY PAST AND PRESENT MEMBERS
SJE Cloister Gallery, 9–24 June 2018
 Exhibition open daily, 1–6 pm
 St John the Evangelist Church
 109A Iffley Road, Oxford OX4 1EH

kieran stiles art studios
 www.artcoursesoxford.com

Launching a new studio



17 Market Street, Woodstock, OX20 1SU

Explore your creativity through art workshops, exhibitions & events in the friendly, vibrant space of a working artist studio.
 kieran@artcoursesoxford.com

Would you or your business like to advertise in these pages during the next Oxfordshire Artweeks festival?

We print 50,000 copies of this free festival guide and art directory: it is distributed from March until May and 100,000 visitors who value beauty and craftsmanship enjoy the Artweeks experience each year.

We also have a smaller Christmas Season brochure distributed in November and December.

Please email artweeks.org or visit www.artweeks.org for further information.



Jericho Artweeks

presents



'Art Today - What Touches Your Soul?'

An internationally acclaimed sculptor who works with his head, with his hands and with his heart talks about his experiences with the present art scene.



Johannes Von Stumm ready for work

The Eighth Jericho Lecture presents:

Johannes Von Stumm PPRBS

President of Oxford Art Society

Tuesday 15 May 2018 at 7.30pm

St Barnabas Church, Cardigan Street, Jericho, Oxford OX2 6BG

ADMISSION FREE - Refreshments available from 7pm / donations welcome



Exhibition Open 5th - 13th May 2018



www.sculptureatkinghamlodge.com

After a successful showing at the recent 'Works on Paper' exhibition at the RGS, Kensington, a stunning new selection of original artworks, plus print editions, by the former BERLIN artist



Walter Lindner (a retrospective)

are being exhibited in support of **St. Ethelwold's House**

30 East St. Helen Street Abingdon OX14 5EB

Sat 19 - Mon 28 May

Enjoy the delightful tranquility of the town centre gardens
Sat 19th 'Plant Sale' Sat 26th 'Cake Event' plus refreshments



OPENING TIMES

Weekends 11am - 5pm (+ Bank Hol Mon)

Weekdays 12 - 4pm



Oxfordshire art all year round

Artweeks artists create art all year round and exhibit both in Oxfordshire and further afield throughout the year. Visit their online galleries at artweeks.org/galleries to see more examples of artists' work, find out about additional exhibitions and Christmas events, or commissioning an individual piece of art. Many also offer workshops.



There are also many galleries across the county which display interesting and inspiring art throughout the year. Above are twenty with whom Artweeks collaborates. For more information on their art spaces and exhibitions, visit their individual websites via artweeks.org/OGN

In November and December, Oxfordshire Artweeks presents a Christmas Season of exhibitions and pop-up fair events. Look out for a brochure in the autumn, or visit www.artweeks.org for further information.

Artweeks Christmas Season

Be creative with your Christmas shopping and choose unique cards and gifts made locally! Throughout November and December, many Artweeks artists and designer-makers host or take part in exhibitions and Christmas fairs across the county. Look out for our Christmas brochure in the autumn or visit www.artweeks.org in October to make your plans.



Robert Strange - detail.

Appleton Christmas Barn
 Appleton Village, Oxfordshire
 Christmas begins at Appleton Christmas Barn
 Open: mid November to December 22nd
 10am – 6pm
 late nights Thursday until 7.30pm
Oxfordshire's Christmas Essential!
www.appletonchristmasbarn.co.uk

CHROMAtch
 Digital Imaging
 Lower Barn, 4 Blenheim Rd, Horspath, OX33 1TY
 Tel: 01865 874846
www.chromatech.uk.com

Top Quality Reproductions from your artworks and photographs

- Digital image capture & artwork scanning
- Prints up to A1 (61 x 84cm, 24 x 33in)
- Best quality archival art paper, canvas & inks
- Certified 75 year fade resistance
- Perfect for short and limited edition print runs
- Make prints on demand as you need them
- Exhibition quality printing
- Short run high quality greetings cards
- Very accurate colour match
- Over 35yrs colour printing experience
- Easy parking
- Details at www.chromatech.uk.com



MR HANBURY'S

MASON ARMS

SOUTH LEIGH



AN ECCENTRICALLY ENGLISH INN
AS FEATURED IN THE MICHELIN PUB GUIDE FOR 2018

Nestled in the beautiful Oxfordshire countryside, we're a countryside pub with rooms, serving an inventive menu of seasonal & home-grown produce in an intimate setting.

With 5 comfy bedrooms tucked away upstairs, as well as the luxurious Barn Suite in the farm outbuildings, this is a fun and friendly place to eat, drink & sleep.

Open daily from 8am - 11pm for breakfast, lunch, dinner & drinks.

Station Road, South Leigh, OX28 6XN | 01993 656238 | hanburysmasonarms.co.uk



Bloxham School

Co-educational Boarding and Day School for ages 11-18



Delighted to be supporting Oxfordshire Artweeks
Art Scholarships available for those with exceptional talent

Please contact admissions@bloxhamschool.com to find out more



Fairtrade At St Michaels
for one-stop fair trade shopping in the heart of Oxford

MONDAY - SATURDAY
10am - 5pm

ACROSS THE COURTYARD & DOWN THE STAIRS

#FT_StMichaels

The Basement, St Michael at the North Gate
Cornmarket Street, Oxford (Near Waterstones)
Mon - Sat 10 - 5 01865 722505
www.fairtradeatstmichaels.co.uk

10% off Crafts with this advert

"Creativity is boundless, spacious and limitless as the sky. We're born with it. It cannot be lost and it cannot be destroyed, - it can only be forgotten." headspace.com



Is it time for developing and exploring your own creativity?
Creativity coaching can help.
Further info:
www.nettajennison.com
07837477579

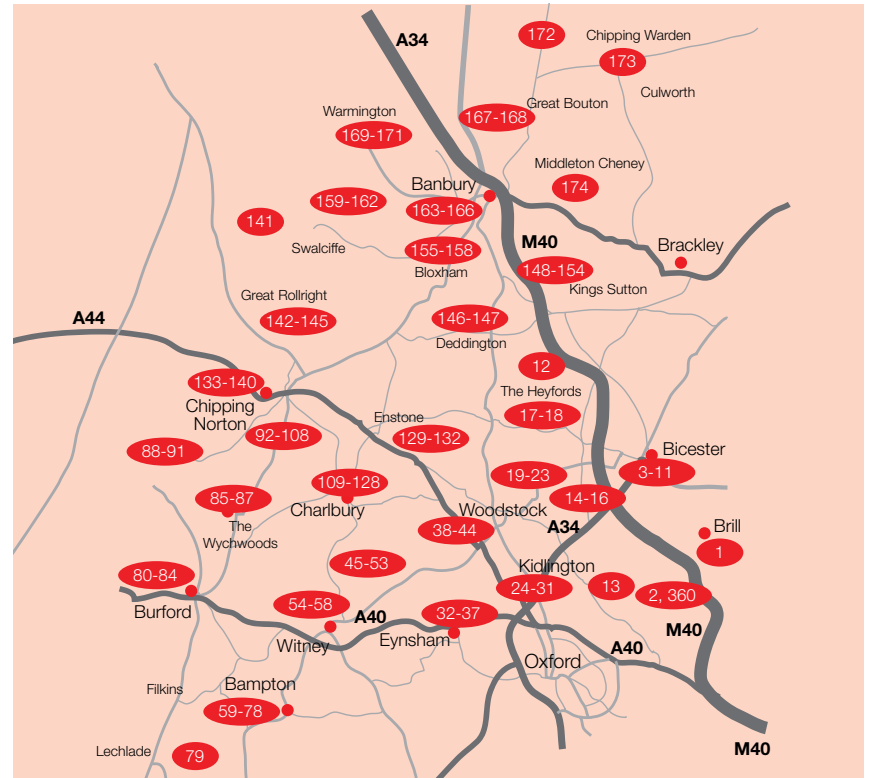


“Art Weeks 2018 Venue”

Proud to be hosting three fantastic local artists between **May 5th-13th 2018**: Sculptor Beatrice Hoffman, Wildlife Artist Andrew Forkner, and Textile Artist Barbara Shaw.



The Manor, Northampton Rd, Weston-on-the-Green, Bicester, OX25 3QL
 Tel: 01869 350621 Web: www.themanorweston.com



NORTH & WEST OXFORDSHIRE 5-13 May 2018

North Oxfordshire Map

This map is to provide approximate guidance only. Please use the venue addresses provided with a road map or SatNav to locate specific exhibitions.

Additional Information

Visit the Artweeks website to see, for many exhibitors, further details, artist biographies, additional pictures of artists' work and to check for any changes and updates.

Local Area Trails

Some groups of artists, coordinated by local volunteer organisers, have put together more detailed trail maps to help you navigate from venue to venue. Many of these can be downloaded at www.artweeks.org

1 Kate Turnbull

Various



Mixed-media botanical prints on silk using plants & flowers from Oxfordshire's landscape. 11am-6pm

Stable Studio, The Manor House, Oakley Road, Brill HP18 9RS. 07766 395196

kturnbull@headingtonschool.com

W | OS

5 6 7 8 9 10 11 12 13

4 Kiki Black Studio

Glass



Unique hand crafted glass jewellery and artglass inspired by colour and nature in home studio. 11am-4pm (Thu 11-7, Sun 10-4pm)

2 Foxglove Close Bicester OX26 3WH 07729 604800

www.kikiblackstudio.co.uk

W | OS | P

5 6 7 8 9 10 11 12 13

2 Greg Knight-Benjafield | Andrew Thompson

Mixed Media



Sculpture: exciting new individual & collaborative work in steel, mixed metal, stone & wood. Sat/Sun 10am-6pm (Fri 7-10pm)

Beckley Village Hall Woodperry Road, Beckley OX3 9UZ. 07818 404131

www.burrwoodbowls.com

W | P

5 6 7 8 9 10 11 12 13

5 Alexandra Buckle

Printmaking



Home printmaking studio featuring large display of colourful linocuts inspired by the countryside. 11am-6pm

71 Bucknell Road Bicester OX26 2DF 07734 859572

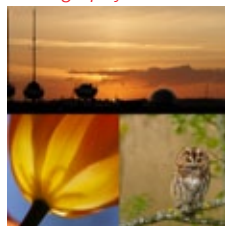
www.alexandrabuckle.co.uk

OS | D | T | P

5 6 7 8 9 10 11 12 13

3 Graham Perryman @ Dragonfly Framing

Photography



Photographs inspired by horticulture & the natural world on fine art paper & canvas, creatively framed. 11am-5pm (Sat 9am-12pm)

Dragonfly Framing & Photography, c/o Mark Smith Land Rover, 2A Wedgwood Road, Bicester OX26 4UL 07889 971629

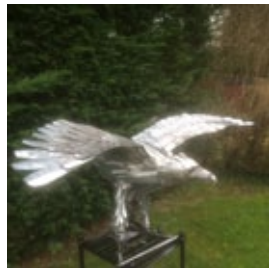
dragonflyframing.co.uk

W | R | P

5 6 7 8 9 10 11 12 13

6 Robert Bucknell

Various



Wrought iron sculptures and furniture. 1pm-6pm

40 Bucknell Road, Bicester OX26 2DG 07947 815689

f /metal-jupiter -223895364800644/

W | P

5 6 7 8 9 10 11 12 13

7 Bicester Sculpture Group

Sculpture



Sculpture in all its forms by multi-talented artists in diverse range of materials, in and around the George Muller Studio. 10.30am-4.30pm

sculptureatbicester.org.uk

W

5 6 7 8 9 10 11 12 13

10 Bicester Art Club

Various



Showcasing members' art in a variety of styles and media. 9.30-7pm (Tue/Fri 9.30-5pm, Sat 9-4.30pm)

Bicester Library Franklin Place, Wesley Lane Bicester OX26 6JU 07890 134057

mueve38.wixsite.com/bicester-art-club

W | P | NS (&14-16 May)

5 6 7 8 9 10 11 12 13

8 OYAP Trust

Various



An exhibition telling the 20 year history of OYAP Trust through artworks alongside work by local artists & young people. 3-6pm (Sat 11am-4pm)

(The Old) St Edburg's Primary School, Cemetery Road Bicester OX26 6BB 01869 602560

www.oyap.org.uk

W | OS | T | NS

5 6 7 8 9 10 11 12 13

11 Hugh Grant

Various



Displays of stained glass windows, abstract paintings, and ceramics in bold bright colours. 11am-4pm

Windmill Cottage Little Chesterton Bicester OX25 3PD 07990 632667

W | OS | R | P

5 6 7 8 9 10 11 12 13

9 Abigail Boisot

Various



New prints and drawings of local landscapes, & bold colourful equine paintings in vibrant Bicester café. 7.30am-6pm (Sat 9am-5pm)

Stansfield & Hoole 34 Market Square Bicester OX26 6AG 07581 344640

www.abigailboisot.com

W | R

5 6 7 8 9 10 11 12 13

12 Mixed Bag

Various



A group of contemporary artist/makers: sculpture, print, jewellery, textiles, paper and millinery. 11am-6pm

Robin Cottage Studio 24 The Lane, Fritwell nr Bicester OX27 7QW 01869 338387

lucybowlermillinery.co.uk

OS | R | P

5 6 7 8 9 10 11 12 13

13 William North
Painting



Atmospheric watercolours of Otmoor & Oxfordshire. Views from Europe, especially Poland. Large garden with ponds & a lake to get lost in. 10am-6pm

Oddington Crossing
Charlton-on-Otmoor
nr Kidlington OX5 2UN
01865 331535
www.williamnorth.co.uk

W | P

5 6 7 8 9 10 11 12 13

16 Barbara Shaw OCG
Textiles



Unique interpretations in textiles of life at this picturesque Tudor Manor country house hotel & its grounds. 11am-6pm
Weston Manor Country House Hotel, Northampton Road
Weston-on-the-Green
nr Bicester OX25 3QL
07535 509188

www.artintextiles.co.uk

W | D | R | P

5 6 7 8 9 10 11 12 13

14 Andrew Forkner WOA
Drawing, Painting



Highly detailed acrylic paintings & graphite pencil drawings featuring British & foreign wildlife, dogs & horses. 11am-6pm
Weston Manor Country House Hotel, Northampton Road
Weston-on-the-Green, nr Bicester OX25 3QL 07895 337217

www.andrewforkner.co.uk

W | D | R | P

5 6 7 8 9 10 11 12 13

17 Art More Lovely
Various



Innovative artists in rectory house & gardens. Teas, light lunches & refreshments at weekends & bank holiday Monday. 11am-5pm (Tue-Fri 12-4pm)
Heyford House
Lower Heyford
nr Bicester OX25 5NZ
07743 336872

www.artmorelovely.co.uk

W | R

5 6 7 8 9 10 11 12 13

15 Beatrice Hoffman
RBSA OAS Sculpture



Sculptures for commissions, the home & garden. Stylised heads, figures & abstract forms. 11am-6pm
Weston Manor Country House Hotel, Northampton Road
Weston-on-the-Green
nr Bicester OX25 3QL
07743 867542

www.beatricehoffman.co.uk

W | D | R | P

5 6 7 8 9 10 11 12 13

18 Fleur Enser
Ceramics, Pottery



Earthenware and stoneware pottery displayed in my studio, opp. church, in beautiful canal-side Lower Heyford. 11am-5pm
The Old Rickyard
Church Lane, Lower Heyford
nr Bicester OX25 5NZ
01869 347905

www.fleurenser.co.uk

W | OS | P

5 6 7 8 9 10 11 12 13

19 Dylan Bowen
Ceramics



Sculptural and functional slip-decorated earthenware. 11am-6pm

The Old Smithy
12 The Green
Tackley OX5 3AF
01869 331278
www.dylanbowen.co.uk

W | OS | P

5 6 7 8 9 10 11 12 13

22 Greenhill Farm Art Studio
Various



This eye-catching group exhibition set in rural surroundings captures artistic expression in colourful mediums. 10-5pm (Sat/Sun 10-6, Wed 10-9pm)
The Art Studio, Greenhill Farm, Station Road, Bletchingdon OX5 3BQ. 01869 350264
info@lisajayne.uk.com

W | OS | D | R | P

5 6 7 8 9 10 11 12 13

20 Benedict Ramos
Photography



Fine art colour and black and white photography. 1pm-6pm

The Old School House
44 Medcroft Road
Tackley OX5 3AH
01869 331704
www.benedictramos.com

OS

5 6 7 8 9 10 11 12 13

23 Sally Dorrity
Ceramics



Small, medium and large unique hand-built pots, both functional and sculptural, for indoors and outside. 10-5pm (Sat/Sun 10-6, Wed 10-9pm)

The Art Studio, Greenhill Farm, Station Road, Bletchingdon OX5 3BQ. 07944 538517
sallydorrity.co.uk

5 6 7 8 9 10 11 12 13

21 Julie Reilly
Ceramics



Organic, sculptural domestic wares printed with lace and found textures from Oxfordshire fields. 10am-4pm (Sat/Sun 11-6)

1 Fousham Road (Swallows Barn)
Tackley OX5 3BB
01869 331174
www.juliereilly.com

W | OS | P

5 6 7 8 9 10 11 12 13 (&15 &17 May)

24 Art at Holy Cross
Various



This beautiful canal-side church provides a perfect setting for an exhibition: painting, jewellery, photography, ceramics & more. Cream teas too! 11am-4pm (Sat/Sun 10-4pm)
Holy Cross Church, Canal-side
Shipton-on-Cherwell
nr Kidlington OX5 1JL
01865 806091

W | R | P

5 6 7 8 9 10 11 12 13

25 Artists at St Mary's
Various



20 artists exhibiting in various media in this ancient and beautiful church.
12-5pm
St Mary's Church
Church Street
Kidlington OX5 2AZ
01865 375611
www.parishofkidlington.org.uk
W | R | P



28 Pam Fyvie OCG
Glass

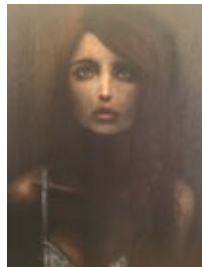


Unique beautiful fused & cast glass, glowing with light & colour in many different forms, inspired by the natural world.
11am-6pm (Thurs/Fri 11-8pm, Sun 10-4pm)
95 Waverley Ave
Kidlington OX5 2ND
01865 460128
www.pamfyvieglass.com

W | OS | D | P | T



26 Richard Guest
Painting



Art that explores the raw emotions surrounding mental health.
11am-6pm
The Old Smithy
School Road
Kidlington OX5 2HB
01865 841166
redbeardart.co.uk

OS | P



29 Grace Mackintosh Sim
Various



Running, swimming and cycling art inspired by nature and the outdoors.
11am-4pm
(Tue-Fri 11-6pm)
106 Water Eaton Lane
Kidlington OX5 2PR
07815 309567
www.swimbikerunart.co.uk

W | OS | D | R | P



27 Kidlington Camera Club
Photography



Recent photographic prints in monochrome & colour from club competitions during the 2017-18 season.
9.30-7pm (Mon 9.30-5, Wed 9.30-1, Sat 9-4.30)
Kidlington Library, Ron Groves House, 23 Oxford Road
Kidlington OX5 2BP
01865 375869
kidlingtoncameraclub.co.uk

W | P | NS (&14-19 21-26 28 May)



30 Andrew Hazelden OCG
WOA Ceramics, Pottery



Wheel-thrown and brush-painted tin glaze earthenware and reduction-fired lustreware: functional & ornamental. 11am-6pm
The Pottery
156 Cassington Road
Yarnton OX5 1QB
01865 371376
www.yarntonpottery.net

W | OS | D | P



31 David Brown
Pottery



All sorts of slipware, stoneware & garden pottery made in my home workshop.
11am-6pm
Glenwood, Little Blenheim
Yarnton OX5 1LX
07724 581950

OS | D | P



34 Eric White
Mixed Media, Painting



A feast of visual delights! Atmospheric interpretations of Oxford, the Cotswolds & beyond in sumptuous pastels & mixed media.
11am-6pm (Sun 12-6pm)
28 Mill Street
Eynsham OX29 4JS
01865 722989
www.ericjohnwhite-art.com

OS | R | P



32 Julia Loken
Painting



Detailed yet vibrant, glowing watercolours, mainly plant related. The large garden which inspires the artist is also open.
11am-6pm
Myrtle Cottage, Tanners Lane
Eynsham OX29 4HJ
01865 881404
www.loken.co.uk



35 Suzy Wright
Drawing, Textiles



Stitched rural landscapes ranging from the allotment to city buildings with a wide range of coloured threads.
11am-6pm
5 High Street
Eynsham OX29 4HA
07938 809175
orangethread.co.uk

(&16-20 23-27 May)



33 Alison Holmans
Pottery

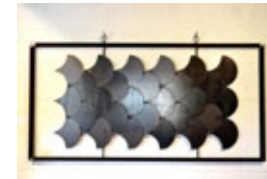


Unique wheel-thrown and hand-built, stoneware and raku pottery that is both functional and aesthetic.
11am-6pm
(Thu 11-8pm)
The Chicken Run Studio
The New House, Tanners Lane
Eynsham OX29 4HJ
01865 883165
[/chickenrunstudio](https://www.facebook.com/chickenrunstudio)

OS | P | T



36 Peter Shrimpton
Sculpture



Contemporary sculpture and installations.
11am-6pm
The Swan Hotel
Acre End Street
Eynsham OX29 4PR
07980 795330
www.isandd.co.uk

OS | R | P



37 Nick Lewis
Painting, Printmaking



Paintings and prints 1980 to present. Exhibits sold to the highest bid.
11am-6pm
7 Willows Edge, Eynsham
OX29 4QD
01865 731303
travelswithmyself.co.uk

W | OS | R | P

5 6 7 8 9 10 11 12 13

40 Louise Gawne
Painting



Paintings, mainly in watercolour.
11am-5pm
The Corner House
1a New Road
Woodstock OX20 1NZ
01993 813935
Louisegawne@aol.com

5 6 7 8 9 10 11 12 13

38 The Oxfordshire Museum
Textiles



Oxford Textile Artists - 25 anniversary exhibition.
10am-5pm (Sun 2-5pm)
The Oxfordshire Museum
Park Street
Woodstock OX20 1SN
01993 814106
oxfordshire.gov.uk/oxfordshiremuseum

W | R | P (&15-20 22-27 May)

5 6 7 8 9 10 11 12 13

41 Sarah Moncrieff
Painting



Oil paintings of the Nepalese Himalayas & the mountains of Snowdonia together with Sarah's urban landscapes. 11am-5pm
14 New Road
Woodstock OX20 1PB
07855 522192
sarahmoncrieffpaintings.co.uk

OS
5 6 7 8 9 10 11 12 13

39 Kieran Stiles OAS
Painting



"These evocative images fizzle with life and electric colour," Browse and Darby.
11-4pm
Kieran Stiles Art Studios
17 Market Street
Woodstock OX20 1SU
07967 075367
www.kieranstiles.com

OS | T

5 6 7 8 9 10 11 12 13

42 Claire Fyfe-Jackson
Jewellery



Unique designer silver, gold & semi-precious gem jewellery.
11am-6pm (Thu 4-8pm)
Sarts Cottage
The Ridings
Stonesfield OX29 8EA
01993 898327
clairepote16@hotmail.com

W
5 6 7 8 9 10 11 12 13

43 Grey Cat Studio
Various



Paintings, prints, jewellery & more by Rachael Sherlaw-Johnson, Rebecca Sherlaw-Johnson, Jenny Lines & Kerry Burniston.
11am-5pm
Grey Cat Studio
Woodlands Rise
Stonesfield OX29 8PL
07771 707818

OS | P

5 6 7 8 9 10 11 12 13

46 Richard Fox
Painting, Sculpture



Sculpture in bronze, stone and wood. Painting in oils and earth pigments.
11am-6pm
(Thu 11am-8pm)
Wilcote Art Studios
4 Hunts Copse, Wilcote Riding
Wilcote nr Finstock OX7 3DX
01993 881830
info@richardfox-sculpture.com

W | OS | D | R | P
5 6 7 8 9 10 11 12 13

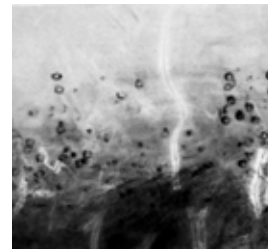
44 Hannelore Meinhold-Morgan OCG
Ceramics



One-off sculptural, hand-built and wheel-thrown ceramic pieces for decoration and inspiration.
12pm-6pm
Boot Barn Pottery
Boot Street
Stonesfield OX29 8PX
01993 891389

5 6 7 8 9 10 11 12 13

47 Katie Hellon
Mixed Media



Mixed media process-driven work exploring material, tools and the dichotomy between order and chaos.
11am-6pm (Thu 11am-8pm)
Wilcote Art Studios
4 Hunts Copse, Wilcote Riding
Wilcote nr Finstock OX7 3DX
01993 881830
katie_hellon@talktalk.net

W | OS | R | P
5 6 7 8 9 10 11 12 13

45 Fiona Peever
| Alec Peever Sculpture



Gallery barn exhibition of sculpture & hand-carved letter cutting in stone; professional artists' open studio. 12-5pm
Gallery Barn, Hunts Copse
Wilcote Riding, Wilcote nr Finstock OX7 3DX
01993 868012
www.alecpeever.com

W | OS | D | P

5 6 7 8 9 10 11 12 13

48 Emma Jay
Ceramics, Mixed Media



Slightly strange ceramics for the home: candlesticks, lamps, baskets, tiny vases... and collaged beachcombing.
11am-6pm
Wilcote Art Studios
4 Hunts Copse, Wilcote Riding
Wilcote nr Finstock OX7 3DX
07703 131000
www.emmajay.com

W | OS | R | P
5 6 7 8 9 10 11 12 13

49 Nimmi Naidoo
Printmaking



Colourful abstract images of landscape and gardens.
11am-6pm (Thu 11am-8pm)
Wilcote Art Studios
4 Hunts Copse
Wilcote Riding, Wilcote
nr Finstock OX7 3DX
01993 881830
www.wilcoteart.wordpress.com

W | OS | P
5 6 7 8 9 10 11 12 13

50 Jennifer Newman
Mixed Media



Mixed media using minerals, oil paint, natural earth pigments, precious metals and resin.
11am-6pm (Thu 11-8pm)
Wilcote Art Studios, 4 Hunts Copse, Wilcote Riding, Wilcote nr Finstock OX7 3DF
01993 881830
www.jennifer-newman.com

W | OS | D | R | P
5 6 7 8 9 10 11 12 13

51 Karen Purple
Painting



Recent oil paintings by established contemporary artist in a working studio.
11am-6pm (Thu 1-8pm)
Wilcote Art Studios
4 Hunts Copse
Wilcote Riding, Wilcote nr Finstock OX7 3DX
01993 881830
www.karenpurple.net

W | OS | R | P
5 6 7 8 9 10 11 12 13

55 Debbie Howard
Various



Vibrant and inspired mixed media art, quirky mosaics and handmade ceramic tableware.
11am-6pm (Thu 11-8, Sun 10-4pm)
Costal Lodge, 47 Woodgreen
Witney OX28 1DE
07796 172036
f /earthhaddictart
OS | D | R | T | P

5 6 7 8 9 10 11 12 13

56 SOTA Gallery
Various



The best Oxfordshire Art & Craft Gallery.
9am-5pm
SOTA Gallery
11 Langdale Court
Witney OX28 6FG
01993 862799
www.sotagallery.co.uk

W | P
5 6 7 8 9 10 11 12 13

57 Jessica Parker
Mixed Media



My work is an exploration of colour & texture depicting landscapes & seascapes often in an exaggerated way.
10am-6pm
Kingfisher Studios, Unit 30
Crawley Mill Industrial Estate
Crawley nr Witney OX29 9TJ
01993 899009
www.kingfisherstudios.biz

W | OS | R | P
5 6 7 8 9 10 11 12 13

52 Crabby Taylor OAS WOA
Ceramics



Exhibition of hand-built raku, saggar and smoke-fired ceramics in a studio setting.
11am-6pm
Wilcote Art Studios
4 Hunts Copse
Wilcote Riding, Wilcote nr Finstock OX7 3DX
01993 881830
www.crabbytaylor.com

W | OS | R | P
5 6 7 8 9 10 11 12 13

53 Jane Wafer
Ceramics



Raku and smoked-fired vessels.
11am-6pm (Thu 11-8pm)
Wilcote Art Studios
4 Hunts Copse
Wilcote Riding Wilcote nr Finstock OX7 3DX
07798 918915
jane.wafer@ntlworld.com

R | P
5 6 7 8 9 10 11 12 13

54 Kamal Lathar
Painting



Paintings are like telling a story, take a line for a walk & make it curve, add a little linseed, turpentine, colour & conflict.
11am-6pm
Midway (the barn down the garden) East End, North Leigh nr Witney OX20 1DL
07976 946331
www.kdlathar.com

OS | R | P
5 6 7 8 9 10 11 12 13

58 John Haynes
Painting



Paintings to illustrate the beauty and character of Old Minster Lovell and places further afield.
11am-11pm
The Old Swan
Minster Lovell nr Witney OX29 0RN
01993 773933
johnhaynes172@yahoo.com

P (5-28 May)
5 6 7 8 9 10 11 12 13

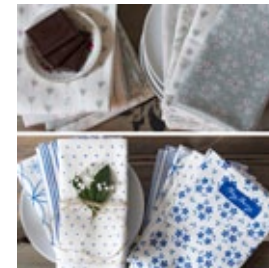
59 Pip Shuckburgh OAS WOA
Painting



Pip's paintings of stately homes and palaces have brought her international celebration. Visit & see some of these famous original paintings.
11am-6pm
Fairwood, Cheapside, Bampton OX18 2JL
01993 851041
www.pipshuckburgh.co.uk

OS
5 6 7 8 9 10 11 12 13

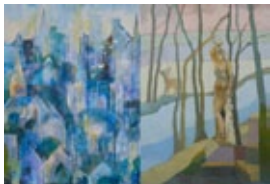
60 Chez Beccy
Textiles



Original designer homeware, aprons, tea towels and other beautiful unique gifts.
10am-4pm
1 Folly View
Market Square
Bampton OX18 2JH
07748 113616
www.chezbeccy.etsy.com

P
5 6 7 8 9 10 11 12 13

61 Fredrica Craig
| Elizabeth Chilton
Painting



Contemporary original oil paintings by individual members of the C21 Group. 11am-6pm (from 15th 11.30-4.30 & Sun 2-4)
West Ox Arts Gallery
Town Hall, Market Square
Bampton OX18 2JH
01993 850137
fredricacraig.com

W | P (&15-20 22-27 May)
5 6 7 8 9 10 11 12 13

64 Piotr Gargas WOA
Sculpture



Hand-carved stone sculptures and cold cast bronze plaques illustrating Oxford architecture. 11am-6pm (from 15th 11.30-4.30 & Sun 2-4)
West Ox Arts Gallery
Town Hall, Market Square
Bampton OX18 2JH
gargaspiotr.wixsite.com/sculpture

P (&15-20 22-27 May)
5 6 7 8 9 10 11 12 13

62 Itsuko Doherty
| Jane Davies
Painting



Contemporary original oil paintings by individual members of the C21 Group. 11am-6pm (from 15th 11.30-4.30 & Sun 2-4)
West Ox Arts Gallery
Town Hall, Market Square
Bampton OX18 2JH
01993 850137

W | P (&15-20 22-27 May)
5 6 7 8 9 10 11 12 13

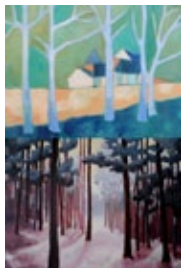
65 Heather King OAS
| Gillian Greenham
Painting



Contemporary original oil paintings by individual members of the C 21 Group. 11am-6pm (from 15th 11.30-4.30 & Sun 2-4)
West Ox Arts Gallery
Town Hall, Market Square
Bampton OX18 2JH
01993 850137

W | P (&15-20 22-27 May)
5 6 7 8 9 10 11 12 13

63 Christine Fertey-Green
| Dirk Pretorius *Various*



Contemporary original oil paintings by individual members of the C 21 Group. 11am-6pm (from 15th 11.30-4.30 & Sun 2-4)
West Ox Arts Gallery
Town Hall, Market Square,
Bampton OX18 2JH
07712 173575
dirk.pret123@gmail.com

W | P (&15-20 22-27 May)
5 6 7 8 9 10 11 12 13

66 Claire Powell
Pottery



One-off thrown pieces, glaze designs influenced by nature. Mugs, jugs, bowls & more. 11am-6pm (from 15th 11.30-4.30 & Sun 2-4)
West Ox Arts Gallery
Town Hall, Market Square.
Bampton OX18 2JH
07754 071612
claire-powell-pottery.co.uk

W | P (&15-20 22-27 May)
5 6 7 8 9 10 11 12 13

67 Angela Radcliffe
Painting



Contemporary original oil painting by a member of the C21 group. 11am-6pm (from 15th 11.30-4.30 & Sun 2-4)
The West Ox Arts Gallery
Town Hall, Market Square
Bampton OX18 2JH
01993 850137
amradcliffe2@aol.com

W | P (&15-20 22-27 May)
5 6 7 8 9 10 11 12 13

70 Tuula Nicholson
Sculpture, Wood



Stylish hand-made wood, slate, & stone sculptures including products for the home and garden. 12-5pm
Wisteria
Church View
Bampton OX18 2NE
01993 852666
stikdesigns@sky.com

W | P (&15-20 22-27 May)
5 6 7 8 9 10 11 12 13

68 Pip Shuckburgh OAS
| Amanda Sarkar
Painting



Contemporary original oil paintings by individual members of the C21 group. 11am-6pm (from 15th 11.30-4.30 & Sun 2-4)
The West Ox Arts Gallery
Town Hall, Market Square
Bampton OX18 2JH
01993 851041
www.pipshuckburgh.co.uk

W | P (&15-20 22-27 May)
5 6 7 8 9 10 11 12 13

71 Sue Turner WOA
Paper



Contemporary, simple, striking upcycled art using postage stamps, maps and music, incorporating paper cutting techniques. 11am-6pm
Lane End, Cheyne Lane
Bampton OX18 2HB
07762 066261
www.laneendvintage.co.uk

5 6 7 8 9 10 11 12 13

69 Lesley Williams WOA
| Frances Williams WOA |
Anna Lever OAS WOA
Various



Professional artists; ceramic sculpture, pottery, domestic ware, lamps, garden pots, framed mixed media works, garden setting. 11am-6pm
Stenton Cottage, 3 Bridge Street
Bampton OX18 2HA
01993 851963
lesley.williams1@hotmail.co.uk

W | OS | D | R | P
5 6 7 8 9 10 11 12 13

72 Nik Stanbridge WOA
Photography



Colourful minimalist abstract photography of urban streets from my new photobook. 11am-6pm
Lane End
Cheyne Lane
Bampton OX18 2HB
07828 002494
nikstanbridge.com

5 6 7 8 9 10 11 12 13

73 Susie Helm
Drawing, Painting



Swimmers, giant seed-heads & landscapes - studio showing paintings & drawings inspired by these three things.
11am-6pm
Lime Tree House, High Street
Bampton OX18 2JN
07774 205972
www.susiehelm.co.uk

OS
5 6 7 8 9 10 11 12 13

76 Neville Crowson WOA
Painting



Plein-air landscapes, church interiors & flowers, still life on view in my house and garden.
11am-6pm
Blomfield House
Cote
Bampton OX18 2EG
01993 850139

OS
5 6 7 8 9 10 11 12 13

74 Mark Fitzgerald
Ceramics



Ceramics workshop producing domestic earthenware pottery, as useful as it is beautiful. Shop window with permanent display of work. 11am-6pm
Sun Pottery, Bushey Row
Bampton OX18 2JU
07910 329426
sunpottery.co.uk

OS
5 6 7 8 9 10 11 12 13

77 Michele Wallington WOA
Painting



Paintings & limited edition prints of imaginative watercolour & mixed media work, mostly local landscapes, seed heads & flowers. 11-6pm (Thu 2-6, Sun 11-4pm)
Barn Cottage, Main Street
Clanfield nr Bampton
OX18 2SH
michelewallington.co.uk

W|R|P
5 6 7 8 9 10 11 12 13

75 Phoebe Bray
Painting



Phoebe paints vibrant and exciting oil paintings, inspired by nature.
11am-6pm
Ashtree House
Weald
Bampton OX18 2HL
01993 852024
phoebe3259.wixsite.com

W|OS|R|P
5 6 7 8 9 10 11 12 13

78 Peter Farley OAS WOA
Painting



Looking back over 50 years of painting & continuing my Mediterranean Odyssey paintings from the Island of Elba. 11am-6pm
Brookside Cottage
Main Street, Clanfield
nr Bampton OX18 2SP
01367 810604
peterfarley.co.uk

OS|P
5 6 7 8 9 10 11 12 13

79 Silvi Schaumloeffel
Painting



Expressive contemporary oil painting displayed in William Morris's Cotswold retreat of Kelmescott by the Thames. Looking forward meeting you!
11am-5pm
The Old School (opp St George's Church)
Kelmescott GL7 3HG
0781 6890207
www.artbysilvi.com

OS|D|R|T|P (&14-17 21-23 May)
5 6 7 8 9 10 11 12 13

82 Sally Wyatt WOA
Painting, Textiles



Expressive and intuitive work born out of observation and discovery in nature.
11am-6pm
Star Cottage B&B
Meadow Lane, Fulbrook
Burford OX18 4BW
01993 822032
www.sallywyatt.com

OS|D|P
5 6 7 8 9 10 11 12 13

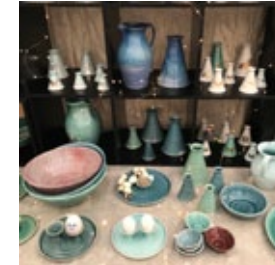
80 Christopher Townsend
| Guen Palmer OCG
Jewellery, Sculpture



Sculpture and jewellery. New work on show in rustic farm courtyard setting.
11am-5pm (Sun 11am-4pm)
The Old Forge, Asthall Barrow
Farm, Asthall nr Burford OX18 4HU
07941 503519
www.christophertownsend.co.uk

OS|R|P
5 6 7 8 9 10 11 12 13

83 Louise Searby: Upton Pottery
Ceramics, Pottery



Visit the pottery. Beautiful and functional stoneware and porcelain pieces, from daisy vases to 3ft jugs.
11am-6pm
Staytes Farm, Upton
nr Burford OX18 4LX
07976 094409

www.uptonpottery.co.uk
OS|D|P
5 6 7 8 9 10 11 12 13

81 Burford Affordable Art Gallery
Various



An exciting exhibition of affordable and vibrant paintings and sculpture by artists both local and from further afield.
9am-6pm (Sun 11am-5pm)
Burford Garden Company
Shilton Road
Burford OX18 4PA
01993 823117
www.burford.co.uk

W|D|R|P
5 6 7 8 9 10 11 12 13

84 Philippa Dickens
Painting, Pottery



Light in the Landscape: exciting exhibition of contemporary paintings, pottery and prints in beautiful studio setting.
12-6pm
Studio Gallery, Willow Cottage
Little Barrington OX18 4TE
01451 844663

philippadickensart.com
OS|R|P
5 6 7 8 9 10 11 12 13

85 Jan Harvey
Mixed Media



New Horizons: mixed media art portraying the line at which the earth's surface and the sky appear to meet. 11am-6pm

The Garden Gallery
Ascott Road
Shipton-under-Wychwood.
OX7 6DG
01993 832357
janharveyartist.wixsite.com/

W | OS | T | P

5 6 7 8 9 10 11 12 13

88 Anne Boning | Diana Green
Drawing, Sculpture



Small sculpture garden and studio. 11am-5pm

The Old Rectory
Church Westcote
nr Chipping Norton
OX7 6SF
01993 830586
www.anneboningstone.co.uk

P

5 6 7 8 9 10 11 12 13

86 Sharon Williams
Painting



Contemporary painting featuring local landscapes, animals & figures. Large and smaller pieces. 11am-3pm

38 Elm Grove
Milton-under-Wychwood
OX7 6EF
07776 252314
www.sharonwilliams.co.uk

OS | P

(&17-19 May)

5 6 7 8 9 10 11 12 13

89 Rosannagh Scarlet
Esson
Painting, Photography



Paintings representing time, environment & the elements through the transformation of material, colour & form. 11am-6pm (Thu/Fri 11-8pm)

6b Langston Priory Workshops
Station Road, Kingham
nr Chipping Norton OX7 3QE
07729 10193
www.rosannagh.com

OS | R | P

(&19-20 May)

5 6 7 8 9 10 11 12 13

87 Sophie Thompson
| Barnaby Lea
Sculpture



Steel sculpture & forged iron work with some kiln glass too. Mostly beasts & birds, suitable for indoors & outside. 11am-6pm

(Thu/Fri 11am-8pm)
Heath Barn, Bruern Road
Milton-under-Wychwood
OX7 6LL. 01993 831645
www.sophiethompson.com

5 6 7 8 9 10 11 12 13

90 Sculpture at Kingham Lodge
Sculpture



Some 400 sculptures by about 80 sculptors in 5 acres of beautiful landscaped gardens. Pop-up café. 11am-6pm

Kingham Lodge, West End
Kingham OX7 6YL
01608 658226
sculptureatkinghamlodge.com

W | R | P

5 6 7 8 9 10 11 12 13

91 Elaine Holloway
Painting



A variety of subjects including landscapes in watercolour and pastel, most painted in situ. 11am-6pm

Miller's Field House
Chipping Norton Road
Churchill OX7 6NG
01608 659241
elaine.holloway@btinternet.com

W | OS | P

5 6 7 8 9 10 11 12 13

94 John Joekes
Sculpture



Using nature and poetry as inspiration, John makes beautiful sculptures from stone. 11am-5pm

Sandys House
Bull Hill
Chadlington OX7 3ND
07899 924267
www.johnjoekes.com

5 6 7 8 9 10 11 12 13

92 Celia Crampton
Drawing, Painting



Intricate prize-winning paintings and drawings inspired by nature. Must be seen; be surprised! 11am-5pm

Sandys House
Bull Hill
Chadlington OX7 3ND
celia@depix.org

P

5 6 7 8 9 10 11 12 13

95 Isabel Knowland
Printmaking, Sculpture



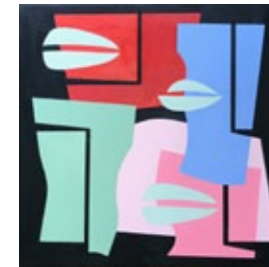
Sculpture and prints inspired by music and poetry. Add your contribution to the Tower of Hope. 11am-5pm

Sandys House
Bull Hill
Chadlington OX7 3ND
01865 806497
isabelknowland@gmail.com

OS | P

5 6 7 8 9 10 11 12 13

93 Tom Cross WOA
Painting



I use shape, colour and composition to create depth, movement, ambiguity and atmosphere. 11am-5pm

Sandys House
Bull Hill
Chadlington OX7 3ND
07980 164610

5 6 7 8 9 10 11 12 13

96 Mary Knowland WOA
Mixed Media



Colourful Zen drawings, paintings. Essence of figure, landscape, still life. Gifts. Beautiful venue. Plant sale. 11am-5pm

Sandys House, Bull Hill
Chadlington OX7 3ND
07929 934079
maryknowlandartist.com

OS | T | P

5 6 7 8 9 10 11 12 13

97 Caroline Rudge

Painting



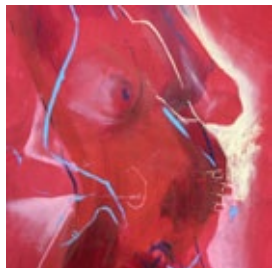
Using nature and portraiture as inspiration, Caroline creates beautiful paintings using egg tempera and gilding.
11am-5pm
Sandsy House
Bull Hill
Chadlington OX7 3ND
07811 277917

R

5 6 7 8 9 10 11 12 13

100 Jill Colchester OAS

Drawing



New works. Drawings of the figure in movement and abstract paintings.
12-5pm
Knollbury
(next to Chadlington Quality Foods) Chadlington OX7 3NJ
07974 814 615
www.jillcolchester.com

P

5 6 7 8 9 10 11 12 13

98 Jacky Radbone

Painting



Studio and plein air oil paintings and cards exhibited in a lovely chapel. Refreshments available.
11am-6pm (Sun 11-5pm)
Chadlington Methodist Church
West End
Chadlington OX7 3NJ
01608 676540
www.jackyradbone.vpweb.co.uk

W|R|P

5 6 7 8 9 10 11 12 13

101 Helena Cummins

Ceramics



Amusing and characterful ceramic sculpture, figures and decorative tableware using hand-built and cast techniques.
12-5pm
Rose Cottage, East End
Chadlington OX7 3LX
07704 059002
helenacummins@aol.com

5 6 7 8 9 10 11 12 13

99 Eleanor Clutton-Brock

OAS Painting, Sculpture



Unusual sculptures, collages and paintings to delight, amuse, and provoke thought.
12-5pm
The Studio, Knollbury
West End
Chadlington OX7 3NJ
eclepaper@hotmail.com

P

5 6 7 8 9 10 11 12 13

102 Carol Edwards

Jane Phillips Jewellery



Hand-crafted contemporary silver jewellery, sometimes incorporating gemstones, pearls and gold.
11am-5pm
St Nicholas Church
Church Road
Chadlington OX7 3LX
07979 496419
mjanephillips48@gmail.com

W|R|P

5 6 7 8 9 10 11 12 13

103 Margaret Gibbs

Mixed Media, Painting



Watercolour and mixed media work and a wide of selection of cards will be available to purchase.
5-13 May
St Nicolas Church
Church Road
Chadlington OX7 3LX
01993 832440
www.littlestockart.co.uk

W|R|P

5 6 7 8 9 10 11 12 13

106 Susan Ryan

Drawing, Painting



Partially-sighted painter using acrylics, charcoal and oil crayons. New works in this, her 5th Artweeks exhibition.
11am-5pm
St Nicholas Church
Church Road, Chadlington
OX7 3LX. 07581 837910
penelopefulljames@hotmail.com

W|R|P

5 6 7 8 9 10 11 12 13

104 Martin Hallam

Wood



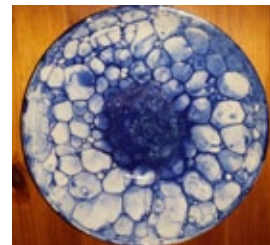
Wood has a natural beauty: I endeavour to capitalise on this beauty by making pieces that enhance those natural features.
11am-5pm
St Nicholas Church
Church Road
Chadlington OX7 3LX
01993 830015
woodturnerm@gmail.com

W|R|P

5 6 7 8 9 10 11 12 13

107 Diana Sainsbury

Pottery



Diana Sainsbury works in stoneware, aiming to produce pots which are useful and beautiful.
11am-5pm
St Nicholas Church, Church Road, Chadlington OX7 3LX
01869 347614
dunstewpottery.businesscatalyst.com

W|R|P

5 6 7 8 9 10 11 12 13

105 Su Hopkins

Painting



Exhibiting for the first time: landscapes in oil and watercolour inspired by the Oxfordshire countryside.
11am-5pm
St Nicholas Church
Church Road
Chadlington OX7 3LX
01993 881975

W|R|P

5 6 7 8 9 10 11 12 13

108 Creative Voice Project

Miscellaneous, Mixed Media



Join us for the new Creative Voice Project: a celebration of story, creativity & community, because everybody has a story to tell...
11am-6pm (Wed 12-6pm)
2 Manor Court
Chadlington OX7 3LW
creativevoiceproject.org.uk

D|R|NS

5 6 7 8 9 10 11 12 13

**109 Karen Lord
| Steve Mitchell**
Ceramics, Painting



Hand-built ceramics, sculptures and large figurative landscapes. 12-6pm
Workshop 1, Spelsbury Workshops, Spelsbury Road Charlbury OX7 3LL 07736 872571
stevemitchellscenicartist.co.uk
OS | R | P



112 Jane Crane WOA
Various



Colour, form and line within landscapes transform into abstracted images. Piece completed during the week. 11am-5pm (Mon-Fri 1pm-5pm)
Flowerpot, Market St, Charlbury OX7 3PH. 01608 810404
www.janecrane.com

W | OS | T
5 6 7 8 9 10 11 12 13

110 Sarah Pulvertaft
Jewellery



Silver and gold jewellery with repeated and kinetic elements in a unique contemporary style. 11am-6pm
The Workshop
Ranger's Lodge
Charlbury OX7 3HL
01608 810221
www.sarahpulvertaft.com

OS | P
5 6 7 8 9 10 11 12 13

113 Jon Mackay | Philippa Phelan | Buttons and Clay
Various



Fine art screen prints, en plein air painting and ceramics. 11am-5pm (Tue-Thu 11-4pm)
The Studio, White Hart Cottage
Charlbury OX7 3PH
07843 448433
www.jonmackay.org

OS | P
5 6 7 8 9 10 11 12 13

111 Catherine Binnie | Christine Thornton
Various



Painting, sculpture, hand-thrown and decorated pottery in Cotswold cottage setting. 11am-6pm
7 Dyers Hill
Charlbury OX7 3QD
07450 313032
www.catherinebinnieartist.com

W | OS | T
5 6 7 8 9 10 11 12 13

114 Maureen Sparling
Mixed Media, Painting



Atmosphere, texture and form in various media. 9am-5.30pm (Sun 10-3)
The Charlbury Deli & Cafe
39 Sheep Street
Charlbury OX7 3PL
07779 779121
www.maureensparling.co.uk

R (5-28 May)
5 6 7 8 9 10 11 12 13

115 Tammy Pratley
Various



Selection of photographic and mixed media artwork based on local landmarks. 12noon-11pm
The Rose & Crown
1 Market Street
Charlbury OX7 3PL
07504 637048
tammyjpratley@gmail.com



118 Anthony Lloyd
Printmaking



Colourful contemporary prints and sculpture. 11am-6pm
Royal Oak Press
Church Street
Charlbury OX7 3PP
07729 777751
www.anthonylloyd.co.uk

W | OS | D | T | P
5 6 7 8 9 10 11 12 13

116 Wendy A. Wilson OAS WOA
Glass, Painting



Colourful abstract paintings and glass. 12-5pm & by appt
The Studio, Newington House
Sheep Street
Charlbury OX7 3RR
01608 811 336
wawilsonstudio@btinternet.com
com
W | OS



119 Geoff Clifford | Wendy Clifford
Ceramics, Painting



Ceramics and painting: a vibrant and colourful exhibition of recent work. 11am-6pm
The Bell Inn
Church Street
Charlbury OX7 3PP
07760 376599
www.geoffclifford.co.uk
W | P



117 Elizabeth Judge
Various



Paintings, mixed media and prints exhibited in a working artist's studio. 11am-6pm
Royal Oak Press
Church Street
Charlbury OX7 3PP

W | OS | D | T | P
5 6 7 8 9 10 11 12 13

120 St Mary's Church Group
Various



Ceramics, mixed media, painting, printmaking, textiles: diverse & inspirational art by 8 artists in peaceful church setting. 10am-6pm (Sun 11am-6pm)
St Mary's Church, Church Lane
Charlbury OX7 3PX
01608 810116
mariooncoates@tiscali.co.uk

W | D | R
5 6 7 8 9 10 11 12 13

121 Cathryn Jeff
Painting



Contemporary land/ seascape & animal paintings using oil, acrylic & watercolour. With 7 others in St Mary's Church. 10am-6pm (Sun 11am-6pm) St Mary's Church, Church Lane Charlbury OX7 3PX 07929 401492

www.cj-art.co.uk
W | D | R



122 Charlbury Pre-school
Various



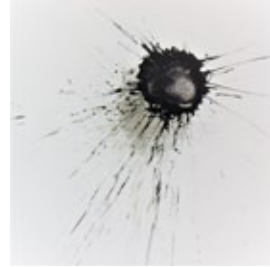
An opportunity to see the work of Charlbury's youngest artists aged 2 to 5. 10am-5pm Charlbury Pre-school Park Street Charlbury OX7 3PS 01608 811200

charlburypreschool.org.uk

OS | R | NS



123 George Taylor RB&A OAS | Janice Thwaites MA
Various



New developments with Janice's 'Silent Music' project & George's mixed media and sculptural works. 12-5pm

Stonewalls, Sturt Road Charlbury OX7 3EP 01608 810174

www.georgetaylorart.com

OS | P



127 Patricia Freeman
Jewellery, Sculpture



I am a silversmith and I make a lot of jewellery. I am also a sculptor. 11am-6pm

4 Enstone Rd Charlbury OX7 3QR 01608 810360

patriciafreeman5@gmail.com

W | OS | D



128 Jenny Haxworth
Pottery



Wheel-thrown stoneware potting. 11am-6pm

4 Enstone Road Charlbury OX3 7QR jenny@haxarch.com

W | OS | R



129 Bernard Johnson | Freda Parker
Various



Visit a working stone-carving studio, see how stone is carved, plus display of illustrations & paintings for children. 11am-6pm

The Pig Sty, Park Farm Kiddington, Woodstock OX20 1BW. 07785 750597

bernardjohnson.co.uk

W | OS | D | R | P



124 Ben Williams
Miscellaneous



Traditional stone carving & letter cutting displayed in garden studio. Works for sale & commission.

11am-6pm (Wed 11-3pm, Thu/Fri 11-8pm) 18 Woodfield Drive Charlbury OX7 3SE 07957 622187

benwilliams-stonecarver.com
OS



125 Anna Gillespie WOA | Kerry Forkner WOA
Various



Glass and textiles. Colour and texture in garden studio & home. Exhibition & demonstrations; new to Charlbury Artweeks. 11am-6pm

6 Tanners Court, Charlbury OX7 3RP. 01608 810402

annagillespieglass.co.uk
OS | D | R | T | P



126 Kati Eidenbenz
Painting



Colourful paintings in watercolour, oil and mixed media: landscapes, still life & the human figure. 11am-6pm

4 Enstone Road Charlbury OX7 3QR 01608 810911

ke@katiandgraham.com

W



130 James Jackman OAS
Painting



A journey through landscape and abstract expression. The viewer's interpretation ultimately completes the creative process. 11am-6pm (Fri 11am-8pm)

Dornley Barn, Westcote Barton nr Chipping Norton OX7 7AD 01869 347950

[f /JamesJackmanArt](https://www.facebook.com/JamesJackmanArt)

P



131 One of a Kind
Various



Nine artists exhibiting a diverse range of work in a variety of mediums. 11am-5pm

Enstone Parish Hall The Paddocks Enstone OX7 4AZ 01993 704345 lizbryant@talktalk.net

W | R | P



132 Andrea Bates
Painting



Landscapes both local and foreign, gardens, meadows, villages, in pastels and oils. 11am-6pm

Hillside Oxford Road Enstone OX7 4NE 01608 677231 www.andreabates.co.uk

W | OS



133 The People's Gallery
Chipping Norton



A new community art gallery with huge range of art on display by local artists in light contemporary building.
12.30pm-6.30pm
Chipping Norton Health Centre
Russell Way, Chipping Norton
OX7 5FA. 01608 642742
lyndsay.madigan@nhs.net

W | P (8,14-18 21-25 28 May)
5 6 7 8 9 10 11 12 13

136 Grenville Moore
Painting



Acrylic wild animal portraits.
10-7pm (Tue/Thu/Fri 11-4, Wed 12-4)
Chipping Norton Theatre
2 Spring Street
Chipping Norton OX7 5NL
01608 642350
chippingnortontheatre.com

5 6 7 8 9 10 11 12 13

134 Martin Sanders
Wood



A collection of, mainly, English turned hardwood bowls, dishes and boxes. Each is a one-off so no copies.
10am-6pm
Rockcliffe House
1 Rock Hill
Chipping Norton
OX7 5BA
01608 642989
yewurn@gmail.com

W | OS | R
5 6 7 8 9 10 11 12 13

137 Oxfordshire Craft Guild
Various



An exciting mix of high quality work from some of OCG's finest designer-makers.
11am-5pm
The Town Hall
Chipping Norton OX7 5AD
01608 641295
www.oxcg.co.uk

W | D | R | P
5 6 7 8 9 10 11 12 13

135 Jill Jeffrey
Painting



Juxtaposing buildings in wilder landscape intrigues me. I gather sketches in West Highlands & Wales.
10-7pm (Tue/Thu/Fri 11-4, Wed 12-4)
Chipping Norton Theatre
2 Spring Street
Chipping Norton OX7 5NL
01608 642350
chippingnortontheatre.com

5 6 7 8 9 10 11 12 13

138 Andrew Wildman
Drawing, Painting



Drawings and paintings by an artist working in comics, games and TV.
10am-5pm (Sun 12-4pm)
The Fibreworks
10a Middle Row
Chipping Norton OX7 5NH
07803 147641
andrewwildmanart.com

5 6 7 8 9 10 11 12 13

139 Caroline Chappell WOA
Painting



Colourful contemporary expressive paintings, drawings and cards in an orchard setting.
11am-6pm
Orchard Cottage
5 The Leys
Chipping Norton OX7 5HQ
01608 645444
www.carolinechappell.co.uk

W | OS | D | T | P
5 6 7 8 9 10 11 12 13

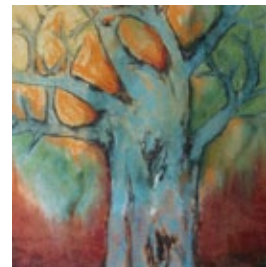
142 Great Rollright's Art in Action
Various



Large friendly group with a range of diverse and unique artwork. Daily demonstrations and refreshments.
11am-6pm (Sat/Sun 10-6pm)
Great Rollright Village Hall
High Street
Great Rollright OX7 5RY
01608 730268

W | D | R | P
5 6 7 8 9 10 11 12 13

140 Carol Harvey
Painting



Trees, the 'pillars of nature', are celebrated in soft pastel and oil bars. Enjoy chat about art, coffee and cake!
11am-6pm
Bliss View Cottage
Worcester Road
Chipping Norton OX7 5XS
07795 515415
harveysfm65@gmail.com

W | OS | D | R | T | P
5 6 7 8 9 10 11 12 13

143 6 at Tyte Tap House
Various



Six artists in village garden setting: jewellery, mixed media, photography, pottery, sculpture & wood.
11am-5pm (Sat/Sun 10-5pm)
Tyte Tap House
Tyte End
Great Rollright OX7 5RU
01608 737517

OS | P
5 6 7 8 9 10 11 12 13

141 Sue Levitch | Ginny Bennett | David Christie
Painting



Oil and watercolour paintings by three local artists.
11am-5pm
Jacques Barn
Stourton (nr Great Rollright)
Shipston-on-Stour
CV36 5HG

W | R | P
5 6 7 8 9 10 11 12 13

144 Neolithic Echoes
Miscellaneous



Spirals & shapes in the landscape.
11am-6pm
Brighthill Farm
Little Rollright
nr Chipping Norton
OX7 5QT
www.whisperingknights.org

P | NS (5-28 May)
5 6 7 8 9 10 11 12 13

145 Jane Abbott
Painting, Textiles



Nature in paintings, calligraphy, textiles & 3D. From birds & animals to ancient woodland. Felted pieces using our own alpaca fleeces.
11am - 5pm (Mon-Fri 11-2pm)
Grange Farm, Church End
Swerford nr Chipping Norton
OX7 4AX. 01608 737313
janeabbott099@gmail.com
OS|D|R|T|P|

5 6 7 8 9 10 11 12 13

146 Holcombe Barn
Various



Back for our 2nd year with an exciting mix of landscapes, still lifes, portraits, ceramics and jewellery.
11-5 pm (Wed-Fri 11-4 pm)
Holcombe Barn
(behind Holcombe House)
Holcombe Gardens
Deddington OX15 0SL
www.holcombearn.co.uk
P

5 6 7 8 9 10 11 12 13

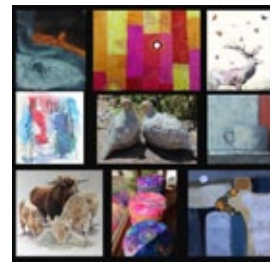
147 Wychwood Art Gallery
Various



Contemporary art gallery with over 50 artists: original art for sale (and more online). Prices ranging from £20 - £3,000.
10am-4pm
Wychwood Art, Market Place
Deddington OX15 0SE
01869 338155
www.wychwoodart.com
P (&14-19.21-26 May)

5 6 7 8 9 10 11 12 13

151 King's Sutton
Collective Various



A group show of ten exciting artists encompassing a wide variety of art media, styles and subjects.
12.30-6pm (Thu 12.30-8pm)
Church of St Peter & St Paul
The Square
Kings Sutton OX17 3RJ
01295 810108
allthekingsartists.weebly.com
W|D|R

5 6 7 8 9 10 11 12 13

152 Margot Bell OPC
Printmaking



Garden studio displaying mainly woodcut prints featuring animals, birds and more.
11am-5pm
5 The Square
King's Sutton OX17 3RQ
01295 811166
margot.bell@mypostoffice.co.uk
OS|D|R|T|P|

5 6 7 8 9 10 11 12 13

153 Helen Woolner
Ceramics



Functional & sculptural ceramics, including Raku, hand-built & thrown ware. Workshops too. Several venues nearby.
11am-6pm (pre-booked workshops can run till 8pm)
Fired Up Studios, 1 Astrop Road
Kings Sutton OX17 3PG
07775 512141
www.firedupstudios.co.uk
OS|D|R|T|P|

5 6 7 8 9 10 11 12 13

148 John Collier
Drawing, Painting



Contemporary drawings in pen/pencil/charcoal/watercolour and impasto oil paintings.
11am-6pm
Beehive Cottage
High Street
Adderbury OX17 3LS
07710 269795
www.johnscollier.com
OS|P|

5 6 7 8 9 10 11 12 13

149 Katharine House Hospice
Drawing, Painting



Water colour, silk and acrylic paintings and other art by patients from Katharine House Hospice.
2pm-4pm
Aynho Road
Adderbury OX17 3NL
01865 811866
www.khh.org.uk
W|OS|P|NS

5 6 7 8 9 10 11 12 13

150 Nathan Barry
Photography



Dramatic light captured both locally & worldwide; bold & elegant landscape photography depicting natural beauty.
11am-5pm
Ennis House, Twyford Grove
Twyford nr Adderbury
OX17 3JD. 07793 046079
nathanbarryphotography.com
W|R|P|

5 6 7 8 9 10 11 12 13

154 Paul Murphy
Printmaking



I create fine art prints in my studio at home inspired by both the landscape around me and my travels.
11am-6pm
The Corner House
2 Banbury Lane
King's Sutton OX17 3RU
07768 731798
paulmurphyprintmaker.co.uk
P

5 6 7 8 9 10 11 12 13

155 Bloxham Baptist Church
Photography



What is worship? Amateur photographer Victoria Evans documents the day-to-day life of Bloxham Baptist Church.
11am-6pm (Fri 6-9pm)
Bloxham Baptist Church
Hawke Lane, Bloxham
nr Banbury OX15 4PY
07966 162004
www.bloxhambaptist.org
W|NS

5 6 7 8 9 10 11 12 13

156 Bloxham School
Various



An exciting opportunity to see an exhibition of the year's best work in a variety of media by the pupils of Bloxham School.
11am-5pm
Art Dept, Bloxham School
Banbury Road, Bloxham
OX15 4PE. 01295 721340
www.bloxhamschool.com
OS|P|NS

5 6 7 8 9 10 11 12 13

157 Sarah Birchall

Mixed Media, Painting



A riot of colour awaits with exciting contemporary art: expressive landscapes, abstracts & blooms. Originals, prints, cards & cake! 11am-5pm (Thurs/Fri 11-7, Sun 11-4)
12 Manning Close, Bletcham nr Banbury OX15 4TH
01295 721531

www.sarahbirchallart.co.uk

OS | R

5 6 7 8 9 10 11 12 13

160 Nigel Fletcher

Painting



A large 2-week (until 20th May) exhibition of new oils and watercolours for sale, cards, and demonstrations. 10am-5pm

Swalcliffe Village Hall
Green Lane, Swalcliffe
nr Banbury OX15 5EQ
07792 657248

nigelfletcher.co.uk

W | D | R | T | P (5-20 May)

5 6 7 8 9 10 11 12 13

158 Sarah Smith

Painting, Printmaking



A large eclectic mix of artworks from print to paintings varying from a graphic style to contemporary abstracts. 11am-6pm

The Old Coach House
15 Church Lane, Milcombe
nr Banbury OX15 4SA
www.sarahbsmith.com

W | O | S | R | P

5 6 7 8 9 10 11 12 13

161 Claire Winfield

Various



An abstract & figurative response to landscape, local history & archaeology utilising a range of materials & processes. Sketchbooks on show. 11am-6pm
Unit 6A Plush Mills, West Street
Shutford nr Banbury OX15 6PH
07796 196853

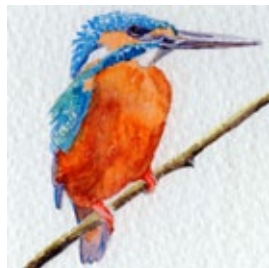
www.cwinfield.co.uk

W | O | S | R | P

5 6 7 8 9 10 11 12 13

159 Ronny Loxton

Painting



Wild Oxfordshire: a Year of Paintings from Nature. Acrylics & watercolours in Swalcliffe Church, new venue, large exhibition. 10am-5pm. (Sun 10.30 - 4.30)

Church of St Peter & St Paul
Swalcliffe, nr Banbury
OX15 5EH. 01295 788146

www.ronnyloxton.com

W | D | R | T | P |

5 6 7 8 9 10 11 12 13

162 Roger Shapley

Painting



Recent work, new direction. Drawing, painting and screen prints. 11am-6pm
North Newington Primary School
School Lane
North Newington OX15 6AQ
01295 730404

W | R | P

5 6 7 8 9 10 11 12 13

163 Gilbert Csecs

| Tracy Csecs

Various



A veritable feast of paintings, ceramics and sculptures exhibited throughout the home and beautiful gardens. 11am-6pm

95 Broughton Road
Banbury OX16 9QH
07710 486353

gilbert.csecs@btconnect.com

R | P

5 6 7 8 9 10 11 12 13

166 Restore Banbury

Miscellaneous



A variety of materials make our exhibition both colourful and magical. 11am-6pm

28 The Warehouse
Calthorpe Street
Banbury OX16 5EX
01295 709414

www.restore.org.uk

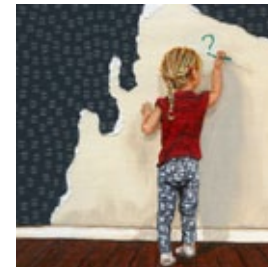
W | O | S | R | P | N | S

5 6 7 8 9 10 11 12 13

164 Ella Hendy at

The Mill Arts Centre

Mixed Media, Painting



Exploring the unexpected in mixed-media. 11am-6pm

The Mill Arts Centre
Spiceball Park
Banbury OX16 5QE
01295 279002

www.themillartscentre.co.uk

W | R | P

(&14-19 21-26 May)

5 6 7 8 9 10 11 12 13

167 Jane Wimbury

Glass



I make colourful fun and functional fused glass pieces, and will demonstrate lampwork bead making. My theme for 2018 is flowers. 11am-6pm

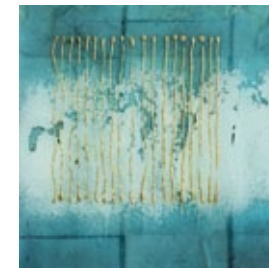
Longridge, Spring Lane
Little Bourton
nr Banbury OX17 1RB
07765 016642
cosycreativecrafts.wordpress.com

W | O | S | D | R | P

5 6 7 8 9 10 11 12 13

165 Ruth Lyne

Glass



Handmade glass inspired by the coast. A collection of wall panels & jewellery on show in gallery run by Banbury Artists' Co-operative. 10am-3pm

Church Lane Gallery
3 Victory Buildings
Church Lane, Banbury
OX16 5LT. 01295 275150
www.banburyartists.wordpress.com/church-lane-gallery/

5 6 7 8 9 10 11 12 13

168 Martin Damen

Wood



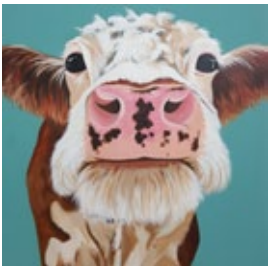
Against Perceived Wisdom: traditional maker of hand-carved spoons & bowls doing something new! 12-6pm

Honeysuckle Cottage
The Green, Great Bourton
nr Banbury OX17 1QH
www.martin-damen.co.uk

O | S | D | T

5 6 7 8 9 10 11 12 13

169 Melanie Charles
Painting



Contemporary, colourful, vibrant animal paintings with a modern twist that hit you right between the eyes!
10am-5pm (Sun 10.30-4pm)
The National Herb Centre
Banbury Road
Warrington OX17 1DF
07803 598444

melaniecharlesartist.co.uk
W | R | P

5 6 7 8 9 10 11 12 13

172 Art at Cool Contours
Various



Fourteen artists, one stunning location. Experience a variety of art inside and out at Cool Contours.
11am-6pm (Thu 11am-8pm)
Cool Contours
Warden Hill, Chipping Warden,
nr Banbury OX17 1AJ
01295 660755

www.coolcontours.co.uk
W | OS | D | R | T | P

5 6 7 8 9 10 11 12 13

170 Ann Donnelly
Glass



Contemporary fused & cast glass including bird sculptures, delicate bowls & abstract works.
10am-5pm (Sun 10.30-4pm)
The National Herb Centre
Banbury Road
Warrington OX17 1DF
07514 560596

antiquegannet@aol.com
W | R | P

5 6 7 8 9 10 11 12 13

173 Ann Crawford
Various



Drawing, prints & paintings: birds, animals and the circus. Work in progress.
2-6pm
Wheatshaf House
The Green, Culworth
nr Banbury OX17 2BB
01295 768818

OS | P

5 6 7 8 9 10 11 12 13

171 Anya Simmons
Various



A contemporary collection of original paintings, giclée limited edition prints, gems, coasters and handmade crafts.
10am-5pm (Sun 10.30-4pm)
The National Herb Centre
Banbury Road
Warrington OX17 1DF
01926 640812

www.anyasimmons.co.uk
W | R | P

5 6 7 8 9 10 11 12 13

174 The Heseltine Gallery
Various



Annual Open Selected Exhibition by artists from North Oxfordshire & South Northamptonshire area.
9am-4pm (Sat/Sun 11am-4pm)
Chenderit School, Archery Road, Middleton Cheney nr Banbury OX17 2QR
01295 711567

W | P

(5-20 May)

5 6 7 8 9 10 11 12 13



Providing help in the heart of the home

Do you or does a loved one need support twenty four hours a day perfectly tailored to your particular needs on either a temporary or long-term basis so that you can live as you choose in the comfort of your own home?

We can help you enjoy independence and well-being, with appropriate assistance always on hand.

To hear more, or for a free-of-charge appointment, contact Rebecca on **01865 715780** or email liveincare@danacare.co.uk



Day and Nightcare **Live-In** www.danacare.co.uk



vital peeters

glass studio
sculpture garden
drawings

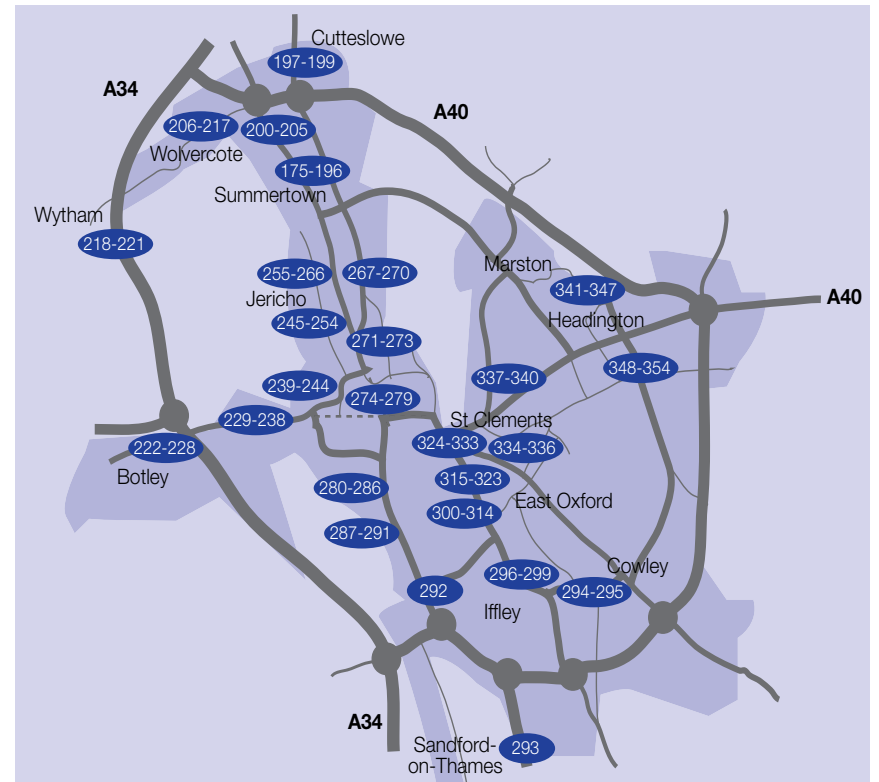
architectural glass in situ
glass, bronze, clay and stone
sculptures

12-20 may
11am - 6pm

538, banbury road, oxford OX2 8EG
tel 01865 512761

www.vitalpeeters.co.uk

Instagram: vitalpeetersglassandstone
facebook: vital peeters



OXFORD CITY 12-20 May 2018



1897 2017

Wychwood School

CELEBRATING 120 YEARS

Discover One of Oxford's Hidden Gems

[#whyilovewychwood](https://twitter.com/whyilovewychwood)

Art Exhibition, Private View
Monday 2nd July, 5.30pm

www.wychwoodschool.org | Follow us @wychwoodschool | admissions@wychwoodschool.org
GSA independent day and boarding school for girls aged 11-18
Weekly, Flexi and Full Boarding Available

Oxford City Map

This map is to provide approximate guidance only. Please use the venue addresses provided with a road map or SatNav to locate specific exhibitions.

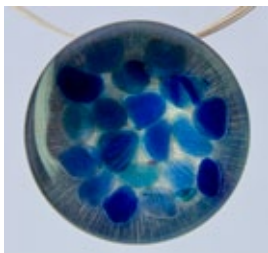
Additional Information

Visit the Artweeks website to see, for many exhibitors, further details, artist biographies, additional pictures of artists' work and to check for any changes and updates.

Local Area Trails

Some groups of artists, coordinated by local volunteer organisers, have put together more detailed trail maps to help you navigate from venue to venue. Many of these can be downloaded at www.artweeks.org

175 Tessa Blenkinsop
Jewellery



An exhibition of jewellery in a garden studio.
11am-6pm
The Studio
Oakthorpe Place
Summertown OX2 7BB
07767 476043
www.tessblenkinsop.co.uk

W | OS

12 13 14 15 16 17 18 19 20

176 Francesca Shakespeare OAS
Painting



A mix of work in my garden studio, open weekends & by appt, or just knock on door if going down the street!
11am-6pm
1 Oakthorpe Road
Summertown OX2 7BD
07976 822773
www.francescashespeare.com

12 13 14 15 16 17 18 19 20

177 Susan Moxley
Printmaking



Exhibition of new works in paint and print.
11am-6pm
43 Oakthorpe Road
Summertown OX2 7BD
01865 516556
www.susanmoxley.com

W

12 13 14 15 16 17 18 19 20

181 Sarah Wiseman
Gallery Painting



Daniel Ablitt: solo exhibition of paintings informed by his travels, landscapes & memories, leading him to explore the concept of home.
10am-5.30pm (Mon 10am-4pm)
40-41 South Parade
Summertown OX2 7JL
01865 515123
www.wisegal.com

W

(5 8-12 14-19 21-26 May)
12 13 14 15 16 17 18 19 20

182 The Turrill Sculpture Garden
Sculpture



For all three weeks talented sculptors from around the county bring their inspired artistry to add vitality to your own garden.
Mon/Fri 9.30-5pm, Tues/Thu 9.30-6.30, Sat 9-4pm
Through Summertown Library
South Parade OX2 7JN
01865 515584
turrillsculpturegarden.org.uk

W

(5 7-8 10-12 14-15 17-19 21-22 24-26 May)
12 13 14 15 16 17 18 19 20

183 The North Wall Arts Centre
Various

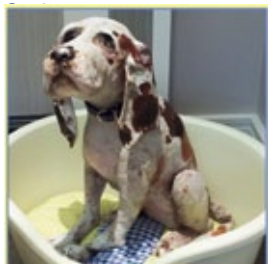


The Long View by Harriet & Rob Fraser: photography, poetry & installations inspired by slow time with trees.
10am-4pm (Sat 12-4pm)
The North Wall Arts Centre
South Parade
Summertown OX2 7JN
01865 319450
www.thenorthwall.com

W | R

(5 7-12 14-19 21-26 May)
12 13 14 15 16 17 18 19 20

178 James C. Cochrane
OCG



A wild and wonderful collection of animal mixed media sculptures from around the world.
9am-5.30pm (Sun 10-4pm)
Farrow & Ball, 225 Banbury Road, Summertown OX2 7HS
07816 129970
jamesccochrane.co.uk

W

(7-27 May)
12 13 14 15 16 17 18 19 20

179 Patricia Sabogal
Painting

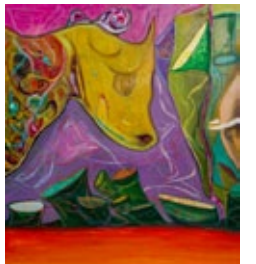


Profoundly personal & emotionally charged spaces. I explore the transformation of mental process between memory, reality & fantasy.
9am-5.30pm
John Lewis of Hungerford
267 South Parade, Summertown OX2 7HT. 07496 262521
www.patriciasabogal.com

W

12 13 14 15 16 17 18 19 20

180 Patricia Sabogal
Painting

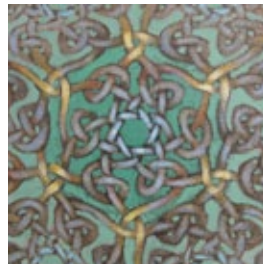


I contemplate through my paintings the effect that this ever changing world has on us, in particular migration.
8.15am-5.15pm
Shaw Gibbs Ltd
264 Banbury Road
Summertown OX3 7SP
07496 262521
www.patriciasabogal.com

W

12 13 14 15 16 17 18 19 20

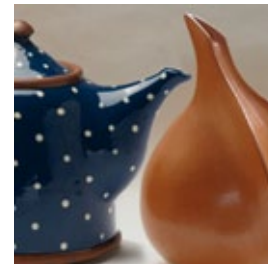
184 James Milroy
Painting



Paintings of interlaced patterns and people.
11am-6pm
44 South Parade
Summertown OX2 7JL
01453 883565
www.jamesmilroy.co.uk

12 13 14 15 16 17 18 19 20

185 Bridget Williams
Ceramics



Wheel-thrown slip-decorated earthenware pottery & one-off handbuilt burnished terracotta & smoke-fired sculptural vessels.
11am-6pm
44 South Parade
Summertown OX2 7JL
07891 165654
www.bridgetwilliams.co.uk

12 13 14 15 16 17 18 19 20

186 Mike Hamand
Various



Black and white photographs. Pen and ink drawings.
12pm-6pm (Sun 11am-6pm)
15 Portland Road
Oxford OX2 7EZ
01865 559856
hamand6@aol.com

OS | P

12 13 14 15 16 17 18 19 20

187 Amanda Hislop OCG

Various



Group Six. Inspired by land and sea, work in paper, fabric, paint and stitch. 12pm-6pm
St Michael & All Angels Church
Lonsdale Road
Summertown OX2 7ES
01235 768212
amandalhisloptextileartist.com
W

12 13 14 15 16 17 18 19 20

188 Caroline Meynell

Painting



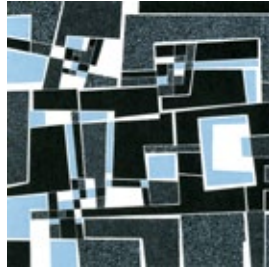
Group Six. Paintings that evoke a sense of space and light in spacious setting of St Michael's Church. 12pm-6pm
St Michael & All Angels Church
Lonsdale Road
Summertown OX2 7ES
07762 380827
www.carolinemeynell.co.uk
W

12 13 14 15 16 17 18 19 20

189 Peter Lawrence OAS

OPC

Printmaking



Group Six. Wood engravings and digital prints, as part of a group show. 12pm-6pm
St Michael & All Angels Church
Lonsdale Road
Summertown OX2 7ES
www.peterlawrence.co.uk

12 13 14 15 16 17 18 19 20

193 Kassandra Isaacson

OAS

Various



Drawings, paintings, prints and giclees; figurative and abstract. 11.30am-5pm
(Thu 12-8, Sun 12-5pm)
325 Banbury Road
Summertown OX2 7JH
01865 554761
k.isaacson@btinternet.com

12 13 14 15 16 17 18 19 20

194 Barbara Harrison

Caban *Painting*

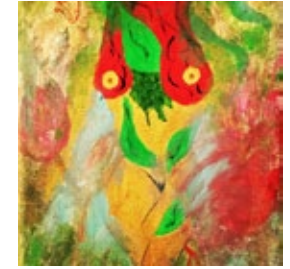


Vivid, colourful paintings. Silkscreen, lino & mono prints. Cushions & postcards in light airy garden rooms with Carlos Caban. 11am-6pm (Thu 11am-8pm)
Apt 1 Victoria Gate, 1A Victoria Road, Summertown OX2 7LS
01865 554555
www.studiolop.com
W | OS | R | P

12 13 14 15 16 17 18 19 20

195 Carlos Caban

Painting

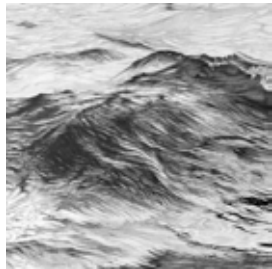


Decorative paintings & collages. Colourful, cheerful & swaggy! With Barbara Harrison Caban in open airy garden rooms. Refreshments! 11am-6pm (Thu 11am-8pm)
Apt 1 Victoria Gate
1A Victoria Road, Summertown OX2 7LS. 01865 554555
carloscaban.wordpress.com
W | OS | R | P

12 13 14 15 16 17 18 19 20

190 Claire Christie Sadler

WOA *Drawing*



Group Six. New drawings including work inspired by light on Scottish landscapes, in a group exhibition. 12pm-6pm
St Michael and All Angels Church, Lonsdale Road
Summertown OX2 7ES
07968 231173
www.clairecsadler.co.uk
W

12 13 14 15 16 17 18 19 20

191 Martin Smith OAS

Sculpture

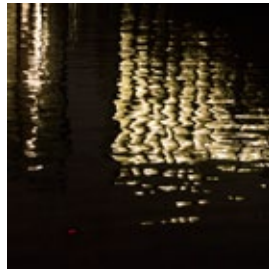


Group Six. Highly-finished stone sculptures, inventive tactile interpretations of natural forms, with five artists in other media. 12pm-6pm
St Michael & All Angels Church
Lonsdale Road, Summertown OX2 7ES. 07771 980758
martinsmithsculpture.co.uk
W

12 13 14 15 16 17 18 19 20

192 Judie Waldmann

WOA *Photography*



Group Six. Photography that explores feelings inspired by the themes 'absence & presence; spaces, interludes & connections'. 12pm-6pm
St Michael and All Angels Church, Lonsdale Road
Summertown OX2 7ES
07831 402763
www.judiewaldmann.co.uk
W

12 13 14 15 16 17 18 19 20

196 Roy Howarth

Painting, Pottery



I love painting on canvas & sometimes on pots. I work in acrylic & often paint over many times to get a deep finish. 11am-6pm
49 Harpes Road
Summertown OX2 7QJ
07866 758625
roy.harpes@gmail.com

12 13 14 15 16 17 18 19 20

197 Marjorie Collins OAS

Painting



Exhibition of watercolours and acrylics of contemporary still lifes, florals and cityscapes. 11am-6pm
28 Hayward Road
North Oxford OX2 8LW
01865 552591
www.marjoriecollins.com

12 13 14 15 16 17 18 19 20

198 Jane Hainsworth

Jewellery



Handmade, colourful jewellery. 2pm-6pm (Sat/Sun 12-6pm)
12 Hayward Road
North Oxford OX2 8LW
01865 558683
www.fizzipins.com

R | P

12 13 14 15 16 17 18 19 20

199 Vital Peeters

Glass, Sculpture, Drawing



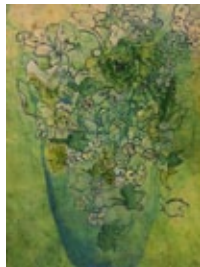
Fused and stained glass in situ, stone and glass sculptures in garden. Open studio since 1989!
11am-6pm
538 Banbury Road
OX2 8EG
01865 512761
vitalpeeters.co.uk

W | OS | R | P

12 13 14 15 16 17 18 19 20

200 Rosie Phipps

Mixed Media, Painting



A selection of paintings will be shown that will illustrate Rosie's journey over the last fifty years.
11am-6pm (Thu/Fri 11-8pm)
26 Five Mile Drive
North Oxford OX2 8HR
07795 341149
rosiehippsart@gmail.com

OS | R | T | P

12 13 14 15 16 17 18 19 20

201 John Huddleston

Jewellery



5 @ 369

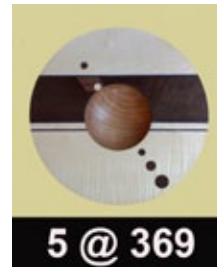
Wide range of attractive, practical & sometimes unusual handmade silverware & jewellery. See my version of the Uffington White Horse.
11am-6pm
369 Woodstock Road
OX2 8AA
01235 524866
www.jhsilver.co.uk

W | P

12 13 14 15 16 17 18 19 20

205 Richard Shock RPT

OCG Wood



5 @ 369

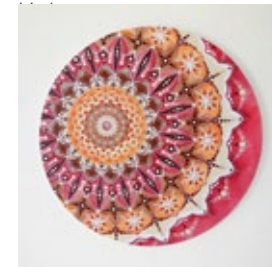
Turned wooden bowls, platters, paperweights, sculptural forms and more to display and to use.
11am-6pm
369 Woodstock Rd
OX2 8AA
07542 422992
woodstockturning.co.uk

W | OS | P

12 13 14 15 16 17 18 19 20

206 Milena Lebedeva OAS

| Yvonne L. Jones



A mixture of beautiful landscapes, botanical art, animal portraits and unique mandala paintings.
11am-6pm
25 Dove House Close
Wolvercote OX2 8BG
07722 190106
milena.lebedeva@hotmail.com

W | OS | D

12 13 14 15 16 17 18 19 20

207 Janet Cross

Ceramics



Hand-built porcelain ceramics inspired by textiles in the artist's studio.
11am-6pm
47 Godstow Road
Wolvercote OX2 8PE
01865 556093
janetsc@outlook.com

W | OS | D | P

12 13 14 15 16 17 18 19 20

202 Mary Lowry OCG

Textiles



5 @ 369

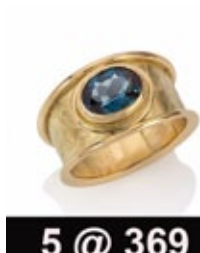
Handwoven scarves & shawls in silk, wool & cashmere with vibrant colour & texture.
11am-6pm
369 Woodstock Road
OX2 8AA
07747 018306
www.mary-lowry.com

W | D | P

12 13 14 15 16 17 18 19 20

203 Guen Palmer OCG

Jewellery



5 @ 369

Contemporary jewellery designed and handmade using precious metals with unusual gemstones and pearls.
11am-6pm
369 Woodstock Road
OX2 8AA
07899 961655
www.guenpalmer.com

W | P

12 13 14 15 16 17 18 19 20

204 Katherine Shock

Painting



5 @ 369

Port Meadow allotments in summer explode into watercolour riches.
11am-6pm
369 Woodstock Road
OX2 8AA
01865 515584
katherineshockwatercolours.co.uk

W | P

12 13 14 15 16 17 18 19 20

208 Sue Cashman

Painting



Colourful oil paintings of landscapes, buildings and flowers. Framed and unframed work along with cards.
11am-5pm
12 Elmthorpe Road
Wolvercote OX2 8PA
01865 552540
sue.cashman@btopenworld.com

12 13 14 15 16 17 18 19 20

209 Vicky Cumming

Jewellery



Individual handmade silver jewellery, often incorporating semi-precious stones, beach pebbles and sea glass.
11am-6pm
9 Rowland Close
Wolvercote OX2 8PW

12 13 14 15 16 17 18 19 20

210 Sue Weinstock

Glass



Beautiful ethereal framed fused glass pictures. Atmospheric abstract paintings with layers of colour and light.
11am-6pm
9 Rowland Close
Wolvercote OX2 8PW
01865 980524
www.sueweinstock.com

W | D | P

12 13 14 15 16 17 18 19 20

211 Alison Morris
Jewellery



Silver jewellery. Exhibiting with Phillip Dove (stained glass), Neil Butterfield (painting) & Jane Moser (sculpture). Ample parking. 11am-6pm
2 Rowland Close
Wolvercote OX2 8PW
01865 429388
alisonmorrisjewellery.com
P

12 13 14 15 16 17 18 19 20

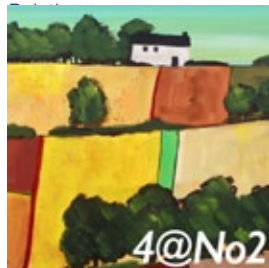
212 Jane Moser
Sculpture



Sculpture. Exhibiting with Phillip Dove (stained glass), Alison Morris (jewellery) & Neil Butterfield (painting). Ample parking. 11am-6pm
2 Rowland Close
Wolvercote OX2 8PW
07977 578809
jane.s.moser@gmail.com
P

12 13 14 15 16 17 18 19 20

213 Neil Butterfield OAS
WOA



Exhibiting with Phillip Dove (stained glass), Alison Morris (jewellery) & Jane Moser (sculpture). Ample parking. 11am-6pm
2 Rowland Close
Wolvercote OX2 8PW
07800 658859
neilbutterfieldart.co.uk
P

12 13 14 15 16 17 18 19 20

217 Lucy Tennyson & Friends
Various



Beyond Port Meadow: exploring place in paint, print, film, hydroponics, textiles and more. 11am-6pm
The White Hart
126 Godstow Road
Wolvercote OX2 8PQ
07715 207784
www.lucytennyson.co.uk
W | R | P | NS

12 13 14 15 16 17 18 19 20

218 John Blandy
Drawing, Painting



Pastels that combine an abstract style with a focus on light and movement. 11am-6pm
Sawmill Yard
Wytham OX2 8QQ
07957 282688
www.johnblandy.co.uk
W | OS | P

12 13 14 15 16 17 18 19 20

219 Another You Life Coaching *Various*



Would you like to be more creative? Creativity coaching can help! See work by clients & make a positive affirmation card. 11am-6pm
Sawmill Barn
Wytham OX2 8QQ
07530 659316
anotheryou.coachesconsole.com
W | D | R | P | NS

12 13 14 15 16 17 18 19 20

214 Phillip Dove
Glass



Stained Glass. Exhibiting with Alison Morris (jewellery), Neil Butterfield (painting) & Jane Moser (sculpture). Ample parking. 11am-6pm
2 Rowland Close
Wolvercote OX2 8PW
01865 429388
www.phillipdove.co.uk
P

12 13 14 15 16 17 18 19 20

215 Tom Croft OAS
Drawing, Painting



Oil portraits, landscapes and still lifes. I will be working on a portrait during Artweeks so come and see! 11am-6pm
32 Home Close
Wolvercote OX2 8PS
07876 352805
www.thomascroft.co.uk
W | OS | D

12 13 14 15 16 17 18 19 20

216 Jane East
Painting



Recent paintings in oil and drawings of the figure. 11am-6pm
126 Godstow Road
Wolvercote OX2 8PQ
07886 098306
rounddozen@me.com
OS | D | R | T | P

12 13 14 15 16 17 18 19 20

220 Rosie Fairfax-Cholmeley | Robin Wilson
Printmaking



Our latest collection of original linocut prints exhibited in our studio in the heart of Wytham Woods. 11am-6pm
The Wytham Studio
Wytham Woods OX2 8QQ
07946 597316
thewythamstudio.co.uk
OS | D | R | T | P

12 13 14 15 16 17 18 19 20

221 Kate Day Dawson | Josephine Malden | Jackie Richards *Various*



Mosaics, paper collage, photography and silver jewellery inspired by the natural world of Wytham Woods & beyond. 11am-6pm
The Botby, Wytham OX2 8QQ
01865 247697
jax.mosaics@googlemail.com
P

12 13 14 15 16 17 18 19 20

222 Louie Memorial Pavilion Community Art Exhibition *Various*



An exhibition of art from the Botley/North Hinksey community, during a period of change. 11am-5pm
Arnolds Way
Botley OX2 9JD
07977 009360
[f /louiememorialpavilion/](https://www.facebook.com/louiememorialpavilion/)
R | P | NS

12 13 14 15 16 17 18 19 20

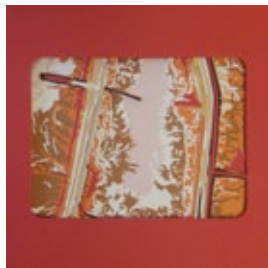
223 Lihua Yuan
Drawing, Painting



Chinese- and Western-style paintings and drawings of flowers, vegetables, birds & cats.
11am-6pm (Thu 11am-8pm)
45 Cedar Road
Botley OX2 9ED
01865 200648
cookyuan45@gmail.com

P
12 13 14 15 16 17 18 19 20

224 Kate Hipkiss OAS
Paper



Intricate handcut paper inspired by patterns within the landscape, both natural and man-made.
12pm-6pm
51 Laburnum Road
Botley OX2 9EN
[instagram.com/katehipkiss/](https://www.instagram.com/katehipkiss/)

12 13 14 15 16 17 18 19 20

225 Emmett Casley
Printmaking



Linocut images, depicting architectural, constructed & natural forms; exploring the relationships between them & the environment.
10am-6pm
10am-6pm
5 Crabtree Road
Botley OX2 9DU
07977 009360
www.emmettcasley.co.uk
OS

12 13 14 15 16 17 18 19 20

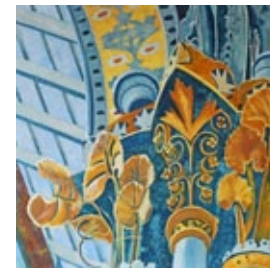
229 Jo Salmon
Painting



Whimsical and fun paintings to make you smile.
9am-8pm (Sat 9-6pm, Sun 10.30-4.30pm)
Hobbycraft, Meadowside
Retail Park, Lamarsh Road
off Botley Road OX2 0HF
07810 546160
salmonje@mail.com

P (5-28 May)
12 13 14 15 16 17 18 19 20

230 Wendy Skinner Smith
OAS Painting



Wendy will be working in her studio: paintings, cards, prints, drawings. With Nicki Parsons (textiles).
11am-6pm (Thu 11am-8pm)
48 Helen Road
OX2 0DE
07735 033370
wendyskinner-smith.co.uk

OS | R
12 13 14 15 16 17 18 19 20

231 Nicki Parsons
Textiles



Handmade felt accessories & home accessories. With Wendy Skinner Smith (painting).
11am-6pm (Thu 11am-8pm)
48 Helen Road
OX2 0DE
07803 328445
www.nickiparsons.com

D
12 13 14 15 16 17 18 19 20

226 Mark Clay
Various



Emerging local artist offering a rich variety of artwork & illustrations celebrating the imagination from the sublime to the ridiculous.
11am-6pm
88 Arthray Road, Botley
OX2 9AB. 07772 406468
markrclay.wixsite.com/mrcstudio
W | OS | R | P

12 13 14 15 16 17 18 19 20

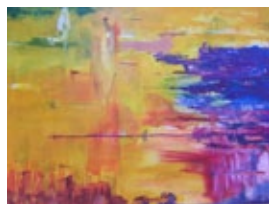
227 Ali Hogg | Jane Hogg
Various



'Changing Horizons' and 'Two Paths': an exhibition of new work in drawing, painting, mixed media & photography at our Botley Studio.
10am-6pm (Thurs 10am-8pm)
42 Arthray Road, Botley
OX2 9AB. 07811 568874
thehogs42@gmail.com
W | OS

12 13 14 15 16 17 18 19 20

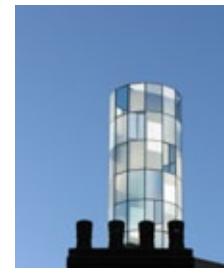
228 E Shannon-Little | Lula Wattam | William De Villiers
Various



A trio of young artists host an exciting collection ranging from vibrant abstractions to magical realist illustrations.
1-6pm Mon-Weds, 11am-8pm Thurs-Sun
The Old School House
140 North Hinksey Lane
North Hinksey OX2 0LZ
oldschoolartox2@gmail.com

OS | R | P (5-13 May)
12 13 14 15 16 17 18 19 20

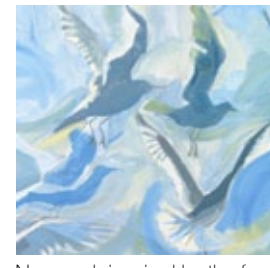
232 Helen White
Photography



Element: consider the photographer's view. The ordinary transformed.
11am-6pm (Thu 11am-8pm)
West Oxford Community Centre
Botley Road OX2 0BT
01865 245761
helenwhite9@outlook.com

W | R | P
12 13 14 15 16 17 18 19 20

233 Deborah Williams
OAS Painting



New work inspired by the four elements; also by Oxford, Greece, Malawi. Collage, paint, pastel, charcoal. Original works, prints, cards.
11am-6pm (Thu 11am - 8pm)
West Oxford Community Centre
Botley Rd OX2 0BT
01865 245761
woca.org.uk

W | R | P
12 13 14 15 16 17 18 19 20

234 wocART
Various



Element. One theme, 5 artists. An inspired collection. Ceramics, collage, paintings, photography, prints & a wide range of topics.
11am-6pm (Thu 11am-8pm)
West Oxford Community Centre
Botley Road OX2 0BT
01865 245761

W | D | R | P
12 13 14 15 16 17 18 19 20

235 Elaine Kazimierczuk
Painting



Semi-abstract landscapes and commissioned portraits by professional artist working in oils. 2018 Mary Moser Award winner: see page 13. 11am-6pm. (Fri 11th 6-8pm)
2 North Street
Osney Island OX4 1RE
07949 382555
elainekazimierczuk.com

OS

12 13 14 15 16 17 18 19 20

236 Bianca Elgar | David Blakemore WOA *Various*

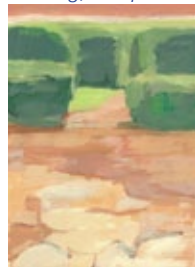


An eclectic mix of oil paintings, prints, art, and scarves. 11am-6pm
15 East Street
Osney Island OX2 0AU
01865203407
www.biancaelgar.com
www.blakemoreart.com

OS

12 13 14 15 16 17 18 19 20

237 Antoinette Ibsen | Annie Wootton
Painting, Sculpture



New paintings by Antoinette and paper-pulp sculptures & drawings by Annie. Tea & coffee. Other artists too. 12-6pm (Thu 12-8pm)
69 Bridge Street
Osney Island OX2 0BD
07975 861919
louiseandbob@gmail.com
R

12 13 14 15 16 17 18 19 20

241 Tommy Watkins
Painting



New York artist. Striking, colourful and imaginative paintings. All original works and prints for sale. 11am-8pm
OVADA Warehouse (Studios)
14a Osney Lane
OX1 1NJ
07543 543273
www.tommywatkins.com
W | OS | D | P

12 13 14 15 16 17 18 19 20

242 Painting For Freedom
Painting

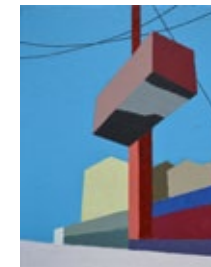


Painting for Freedom: artists in support of 'Freeset'. We paint, you invest, they choose freedom! 11am-4pm (Thu 11-6pm, Sun 10-1pm)
New Road Baptist Church
Bonn Square OX1 1LQ
01865 798235
newroad.org.uk

W | D | R

12 13 14 15 16 17 18 19 20

243 Simon East OPC
Painting, Printmaking



Abstract and figurative paintings and prints. Ring buzzer, staircase next to Fopp Shop. 12pm-6pm (Thu 12-8pm)
47 The Chilterns
Gloucester Green OX1 2DF
07980 209180
www.simon-east.co.uk

12 13 14 15 16 17 18 19 20

238 Louise Summers | Bob Summers
Painting, Printmaking



Rag rugs, relief prints, collage, baskets, rushwork, greenwood. Tea & coffee. Other artists too. 12-6pm (Thu 12-8pm)
69 Bridge Street
Osney Island OX2 0BD
07975 861919
louiseandbob@gmail.com
R

12 13 14 15 16 17 18 19 20

239 The Jam Factory
Various



Frank Cooper's old Victorian marmalade factory's annual 'Oxford Open' exhibition, an eclectic show not to be missed. 11am-6pm
The Jam Factory Restaurant and Bar, 27 Park End Street
OX1 1HU. 01865 244 613
thejamfactoryoxford.com

W (5-28 May)

12 13 14 15 16 17 18 19 20

240 OVADA
Various



View a selection of new work created by participants of OVADA's experimental art classes. 12pm-6pm
OVADA Warehouse
14a Osney Lane
OX1 1NJ
01865 200979
www.ovada.org.uk

W | NS (8-5 6 10-11 May)

12 13 14 15 16 17 18 19 20

244 Bowls and Scrolls
Miscellaneous



Bowls and Scrolls. A collective artwork created in a family workshop with artist Francesca Shakespeare. Ask at Welcome Desk for directions. 10am-5pm
The Ashmolean Museum
Beaumont Street OX1 2PF
01865 278178
www.ashmolean.org

W | R | T | NS (5-6 8-13 22-27 May)

12 13 14 15 16 17 18 19 20

245 Susan Avery
Painting



The transparency of pure watercolour. Coastal landscape, geology and architecture. 11am-6pm (Thu 11-8pm)
33 Cardigan Street
01865 557231
susanavery.co.uk

W

12 13 14 15 16 17 18 19 20

246 Art Studio Jericho
Various



Exhibitions of everyday people with a link to Jericho Community Centre. 11am-6pm (Thu 11-8pm)
33A Canal Street
Jericho OX2 6BQ
07771 754133
www.artstudio.rocks

NS

12 13 14 15 16 17 18 19 20

247 Judith Berger OCG
| **Michael Berger OCG-**
Glass



Decorative and functional fused glass.
12pm-6pm
St Barnabas Church
Cardigan Street
Jericho OX2 6BG
07894 714507
judithamiddleton@gmail.com

W | D | R
12 13 14 15 16 17 18 19 20

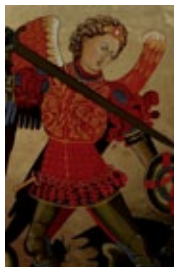
248 Anita Cooper
Printmaking



Striking botanical prints with poetry in vibrant colours and monotonous.
12pm-6pm
St Barnabas Church
Cardigan Street
Jericho OX2 6BG
07766 793869
anita.cooper100@gmail.com

W | D | R
12 13 14 15 16 17 18 19 20

249 Siobhan Fraser
Painting



Traditional Greek and Russian icons painted in egg tempera on board with gold leaf.
12pm-6pm
St Barnabas Church
Cardigan Street
Jericho OX2 6BG

W | D | R
12 13 14 15 16 17 18 19 20

253 10 Potters
Ceramics



Varied exhibition by very different yet equally talented potters in breath-taking church setting.
12pm-6pm
St Barnabas Church
Cardigan Street
Jericho OX2 6BG
01865 513156
thornton477@btinternet.com

W | D | R
12 13 14 15 16 17 18 19 20

254 Rachel Ducker OAS
Sculpture



Unique sculptured wire figures expressing the emotional dynamics of human nature. Silver handcrafted jewellery.
11am-6pm
7 Shirley Place
Juxon Street
Jericho OX2 6DN
07855 751756
www.rachelducker.co.uk

12 13 14 15 16 17 18 19 20

255 Maggie Bicknell OAS
Painting



Scenes from my life: places, people and things I know.
11am-6pm (Thu 11-8pm)
14 Plantation Rd
Jericho OX2 6JD
01865 516751
maggiebicknell.wordpress.com

12 13 14 15 16 17 18 19 20

250 Lizzie Hurst OCG
Textiles



New occasion & everyday hats, berets, trilbies, sunhats, bandeaus, fashion accessories, brooches & Liberty frogs.
12pm-6pm
St Barnabas Church, Cardigan Street, Jericho OX2 6BG
07906 807024
oxcg.co.uk/lizziehurst
W | D | R | T

12 13 14 15 16 17 18 19 20

251 Valerie Petts OAS
Painting



Landscape and still life paintings in both oils and watercolours.
12pm-6pm
St Barnabas Church
Cardigan Street
Jericho OX2 6BG
07729 026466
www.valeriepetts.co.uk

W | D | R
12 13 14 15 16 17 18 19 20

252 Annik Piriou OCG
Jewellery



Designer jewellery in silver with 18ct gold detail using semi-precious stones such as lapis lazuli and serpentine.
12pm-6pm
St Barnabas Church
Cardigan Street
Jericho OX2 6BG
07837 272842
annikpiriou@hotmail.com

W | D | R
12 13 14 15 16 17 18 19 20

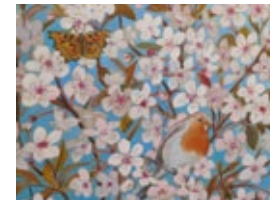
256 Tony Thomson
Jewellery



Exhibition & workshop. Handmade jewellery/silverware using silver, gold, precious & semi-precious stones, fossils, shells & sea-glass.
12pm-6pm
51 Plantation Road
Jericho OX2 6JE
01865 512913
tony.thomson51@icloud.com
OS

12 13 14 15 16 17 18 19 20

257 Jane Mollison
Painting



Paintings from Columbia, India, Greece, Indonesia and of reef fishes.
11am-6pm
40 Leckford Road
Jericho OX2 6HY
01865 515077
sjmollison@yahoo.co.uk

12 13 14 15 16 17 18 19 20

258 Julia Dromgoole
Ceramics



Vibrant free-form hand-built ceramics.
11am-6pm
(Friday 18th 11am-8pm)
20a Walton Well Road
Jericho OX2 6ED
07973 831029

[f /Julia.dromgooleceramics](https://www.facebook.com/juliadromgooleceramics)

12 13 14 15 16 17 18 19 20

259 Becky Morgans OCG
Jewellery



Handmade silver jewellery: organic designs using sea glass, fresh water pearls & gold detail.
11am-6pm (Fri 11-8pm)
82 Southmoor Rd
Jericho OX2 6RB
07773 018984
www.beckyjewellery.com

12 13 14 15 16 17 18 19 20

260 Frank Newhofer
Photography



Photographs amplified by mixed media to create original and intense images.
11am-6pm (Fri 11-8pm)
82 Southmoor Road
Jericho OX2 6RB
01865 557393
[flickr.com/photos/franknewhofer/sets](https://www.flickr.com/photos/franknewhofer/sets)

12 13 14 15 16 17 18 19 20

261 Wendy Newhofer
OAS OCG
Glass



Elegant wall panels and sculptural glass for indoors and out. Lovely garden studio open to visitors.
11am-6pm (Fri 11-8pm)
82 Southmoor Road
Jericho OX2 6RB
0773 2128083
www.wendynewhofer.com
OS

12 13 14 15 16 17 18 19 20

265 Oxford Ikebana Study Group
Miscellaneous



Oxford Ikebana Study Group's one-day only exhibition of Japanese flower arrangements (ikebana).
12.30pm-6pm
St Margaret's Institute
30 Polstead Road OX4 3NY
01865 748365
www.smi-oxford.co.uk
W | D | R | NS

12 13 14 15 16 17 18 19 20

266 Alliance Française d'Oxford
Photography



Photo exhibition: the May 1968 Uprising in Paris. Released for the first time to mark the 50th anniversary of the events.
11am-4pm
30 Polstead Road (1st Floor)
OX2 6TN
07724 243687
af-oxford.org

NS
12 13 14 15 16 17 18 19 20

267 Miesje Chafer
Textiles



Hand screen printed textile accessories for you and your home.
10am-5pm
7 Northmoor Road
OX2 6UW
07596 076762
www.miesjechafer.com

12 13 14 15 16 17 18 19 20

262 Lucy Hartley OAS
Painting



An exhibition of urban and rural landscapes.
11am-6pm (Thu 11-8pm)
28 Kingston Road
Jericho OX2 6RQ
01865 556109
www.lucyhartleyart.com

12 13 14 15 16 17 18 19 20

263 Polly Mitchell
Glass



Engraved glass, bowls, lanterns, wine glasses and vases. Do visit my garden studio by Oxford Canal.
11am-6pm
85 Kingston Road
Jericho OX2 6RJ
01865 553728
pmitchell224@gmail.com

OS
12 13 14 15 16 17 18 19 20

264 SS Philip and James Primary School
Various



All welcome to our Open House Evening. Visit vibrant art exhibition, watch many talented performers & try an arty workshop. 5-7pm
SS Philip & James Primary School, Navigation Way
OX2 6AB. 01865 311064
ss-philip-and-james.oxon.sch.uk
W | R | T | NS

12 13 14 15 16 17 18 19 20

268 Alison Hehir
Painting



A fresh look at the beauty of Oxford through a lens of translucent watercolour.
11am-6pm
54 Park Town
OX2 6SJ
01865 553771
www.alisonhehir.com

12 13 14 15 16 17 18 19 20

269 Teresa Munby WOA
Ceramics



Hand-built coloured and patterned porcelain paper clay vases & sculptural pieces. Glazed stoneware thrown bowls.
11am-6pm (Fri 11-8pm)
56 Park Town
(rear access via Dragon Lane)
OX2 6SJ
teresamunbyceramics.co.uk

OS
12 13 14 15 16 17 18 19 20

270 Maison Française d'Oxford
Painting



Born in 1909, André Lemaitre painted landscapes & still lifes originally inspired by artists like Paul Cézanne & André Vlamincq.
11am-6pm
Maison Française d'Oxford
2-10 Norham Road
Oxford OX2 6SE
www.mfo.ac.uk

W (7-12 14-19 21-25 28 May)
12 13 14 15 16 17 18 19 20

271 Oxford Photographers

Photography



Local photographers present recent work on subjects ranging from architecture and landscape to wildlife and street photography. 8am-6pm Mezzanine of the Andrew Wiles Building (Mathematical Institute) Radcliffe Observatory Quarter Woodstock Road OX2 6GG 07410 627680

oxfordphotographers.org

W | R | NS (7-12 14-18 21-24 May)

12 13 14 15 16 17 18 19 20

272 Jenny Fay OAS

Painting



Portraits painted in oils, each unique and characterful, displayed in a beautiful Oxford College. 10am-6pm (Thu/Fri 10-8pm) Kendrew Barn Gallery St John's College St Giles OX1 3JP 07918 686641

www.jennyfay.co.uk

P

12 13 14 15 16 17 18 19 20

273 Department of Physics, University Of Oxford

Various



Exhibition of art pieces by members of the Department of Physics of the University of Oxford. 10am-4pm (Fri 5.30-7.30pm) Clarendon Laboratory Parks Road OX1 3PU 01865 272200

physics.ox.ac.uk/artweeks

W | NS

12 13 14 15 16 17 18 19 20

277 Campsfield House IRC

Painting, Photography



A selection of paintings and photographs made by detainees whilst at Campsfield House IRC. 10am-5pm St Michael at the North Gate Church Cornmarket Street OX1 3EY 01865 240940

W | NS

12 13 14 15 16 17 18 19 20

278 Fairtrade at St Michael's

Various



A Celebration of Fair Trade: an open exhibition of local artists & designer-makers creating work on the theme of fair trade. 10am-5pm The Basement St Michael at the North Gate Cornmarket Street OX1 3EY 01865 722505

fairtradeatstmichaels.co.uk

NS

12 13 14 15 16 17 18 19 20

279 Modern Art Oxford

Miscellaneous, New Media



The Family in Disorder: Truth or Dare. The first major UK solo exhibition by Brazilian artist Cinthia Marcelle. 10am-5pm (Sun 12-5pm) Modern Art Oxford 30 Pembroke Street OX1 1BP modernartoxford.org.uk

W | R | NS (5-6 8-13 22-27 May)

12 13 14 15 16 17 18 19 20

274 St Edmund Hall

Various



Exhibition of art in various forms by current students, staff, Fellows and alumni. 1pm-5pm (Sat 1-4pm) St Edmund Hall Queen's Lane OX1 4AR 01865 279555 www.seh.ox.ac.uk

W | NS

12 13 14 15 16 17 18 19 20

275 Anita Cooper

Printmaking



Striking botanical prints with poetry in vibrant colours and monotones. 9am-6.30pm (Sun 11-5pm) Caffé Nero (1st floor) Blackwell's Bookshop 48-51 Broad Street OX1 3BQ 07766 793869 anita.cooper100@gmail.com

W | R

(5-28 May)

12 13 14 15 16 17 18 19 20

276 Broad Canvas

Various



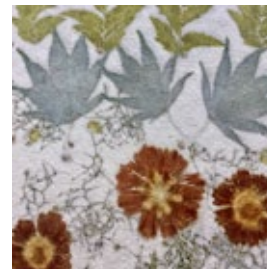
The talented art shop team show off their skills in the gallery upstairs. 9am-5.30pm (Sun 11am-5pm) The Little Gallery at Broad Canvas, 20 Broad Street OX1 3AS 01865 244025 broadcanvas.net

(5-28 May)

12 13 14 15 16 17 18 19 20

280 St Matthew's Church and Community

Various



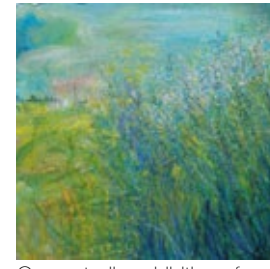
A peaceful space for browsing works in various media by several local artists. Refreshments available. 1pm-6pm St Matthew's Church Marlborough Road OX1 4LW 07962 180980 stmatthewsoxford.org.uk

W | R | NS

12 13 14 15 16 17 18 19 20

281 Jo Dixon

Mixed Media

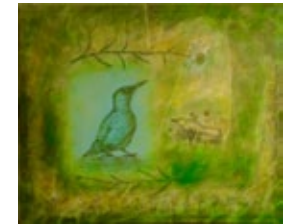


Open studio exhibition of mixed media paintings and range of limited edition giclée prints. 11am-6pm Edith Road Workshops 15 Edith Road OX1 4QB 07542 882941 www.jodixon.co.uk

12 13 14 15 16 17 18 19 20

282 Melanie Donaldson

Painting



Open studio showing mixed media paintings, handmade prints, giclée prints & cards. Mystical landscapes with birds and cats, & botanicals. 11am-6pm Edith Road Workshops 15 Edith Road OX1 4QB www.melanie-donaldson.com

OS | P

12 13 14 15 16 17 18 19 20

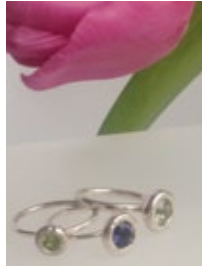
283 Valerie Mead OCG
Jewellery



Open studio showing elegant contemporary designer jewellery in silver & rose gold. Weekends only. 11am-6pm
Edith Road Workshops
15 Edith Road
OX1 4QB
01865 240809
www.valeriemead.co.uk
W|OS|T

12 13 14 15 16 17 18 19 20

284 Anna Opher
Jewellery



Contemporary handmade jewellery in precious metals. 11am-6pm
Edith Road Workshops
15 Edith Road
OX1 4QB
07960 753464
www.annaopher.com

W|OS

12 13 14 15 16 17 18 19 20

285 Sarah Spackman
Painting



New paintings and drawings shown in a beautiful working studio. 11am-6pm
Edith Rd Workshops
15 Edith Road
OX1 4QB
07789 261428
www.sarahspackman.com

W|OS|R

12 13 14 15 16 17 18 19 20

289 Sophie Basilevitch
Printmaking



Bold, colourful, unique hand-pulled linoprints inspired by animals and nature. 12pm-6pm (Thu 12-8pm)
10B Gordon Street
OX1 4RJ
[instagram.com/beryoizamade](https://www.instagram.com/beryoizamade)

12 13 14 15 16 17 18 19 20

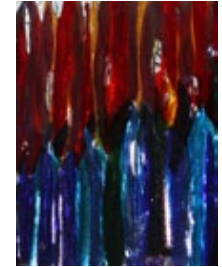
290 David Bliss
Drawing, Painting



Paintings and drawings, local landscapes painted in situ and still lifes. 11am-5pm
32 Lincoln Road
OX1 4TB
01865 722481
davidblisspainter.com

12 13 14 15 16 17 18 19 20

291 Pam Armitage OCG
Glass



Stunning fused glass, sculptural pieces, bowls, trees. Demos. Ample parking outside. Additional hours by appointment. 2-6pm (or by appt)
94 Wytham Street
OX1 4TW
01865 424699
pamarmitage.co.uk
OS|D|P

12 13 14 15 16 17 18 19 20

286 Gordon Stokes
Photography



The coast, the sea and the sky, plus Oxfordshire landscapes. Framed prints and a range of greetings cards. Weekends only. 11am-6pm
Edith Road Workshops
15 Edith Road
OX1 4QB. 01865 240809
www.gordonstokes.co.uk
W|OS

12 13 14 15 16 17 18 19 20

287 South Oxford Community Association
Various



An exhibition of mixed media from local and established artists. 11am-6pm (Fri 6-9pm)
South Oxford Community Centre, Lake Street
OX1 4RP
01865 242666
southoxford.org
W|D|R|NS

12 13 14 15 16 17 18 19 20

288 Jim Robinson OAS
WOA Painting



Paintings of Oxford city scenes. 11am-6pm (Fri 6-9pm)
South Oxford Community Association
Lake Street
OX1 4RP
01865 242666
www.clayimage.co.uk

W|OS|R

12 13 14 15 16 17 18 19 20

292 Oxfordshire Association for The Blind



Original Frankie Cummins paintings available for a donation, & amazing art and photography by visually-impaired people. 11am-6pm
Bradbury Lodge
Gordon Woodward Way
OX1 4XL
01865 725595
www.oxeyes.org.uk

W|R|P|NS

12 13 14 15 16 17 18 19 20

293 Emmanuel Christian School
Photography



Humans of Emmanuel: stories capturing faith, hope and love in our community through the lens of Jonathan Self. 11am-6pm (Mon-Fri 4-6 pm)
Emmanuel Christian School
Sandford Road
OX4 4PU
01865 395236
ecs.school.co.uk

W|OS|R|P

12 13 14 15 16 17 18 19 20

294 Oliver Skertchly
Miscellaneous



Lamps and lampshades. Upcycled and recycled materials. 12pm-6pm (Fri 4-7pm)
16 Lewin Close
OX4 3JL
07971 456699

R|P

12 13 14 15 16 17 18 19 20

295 Kay Renfrew

Mixed Media



Mixed media artwork of birds using new and unwanted materials.

12pm-6pm (Fri 4-7pm)
16 Lewin Close
OX4 3JL
07867 708443

R | P

12 13 14 15 16 17 18 19 20

296 Elaine Allender

Painting



New harbour & landscape paintings as well as meadows & flowers.

Originals, limited edition prints & greetings cards.
11am-6pm (Fri 11-8pm)
77 Courtland Road
Iffley OX4 4HZ
07870 929768

elaineallenderart.co.uk

OS | R | P

12 13 14 15 16 17 18 19 20

297 David Goode

Sculpture



Sculpture garden, studio and gallery. Over 40 bronzes inspired by the imagery of folklore.

9am-8pm
400 Meadow Lane
Iffley OX4 4ED
07967 380742

www.david-goode.com

W | OS | R | P

12 13 14 15 16 17 18 19 20

301 Marc Thompson OAS

Painting



Landscape as a starting-point to explore colour, light and tone.

11am-6pm
66 Fairacres Road
OX4 1TG
01865 248409

[f /marcthompsonartist](https://www.facebook.com/marcthompsonartist)

12 13 14 15 16 17 18 19 20

302 Jane Hope OAS WOA

Painting



Bright paintings of Lake Tahoe, and quieter colours of England. Apples too.

11am-6pm (Thu 11-8pm)
Garden Studio
64 Argyle Street
OX4 1SS
07948 977459

www.janehope.co.uk

12 13 14 15 16 17 18 19 20

303 Laurence Burrell OAS

Painting



Original landscape paintings in watercolour and pastel, prints and cards.

11am-6pm (Thu 11-8pm)
59 Bedford Street
OX4 1SU
01865 249062
jean.burrell@ntlworld.com

W | P

12 13 14 15 16 17 18 19 20

298 Bridget Wheatley

Jewellery



Handmade collections of beautiful jewellery in a garden setting, inspired by nature, the cosmos & mythology.

11-5pm
(Thu/Fri 12-7, Sun 12-4pm)
187 Campbell Road
OX4 3NT
07887 501409

www.bridgetwheatley.com

OS | P

12 13 14 15 16 17 18 19 20

299 David Paylor

Painting



Over 50 paintings in various mediums displayed, along with prints and cards. All for sale. 12-6pm (Tues 6-9pm, Thu/Fri 1-6pm)

Langdale Studios
42 Florence Park Road
OX4 3PJ
01865 779605

www.langdalestudios.com

OS | R | T | P

12 13 14 15 16 17 18 19 20

300 Peter Corcutt

Painting



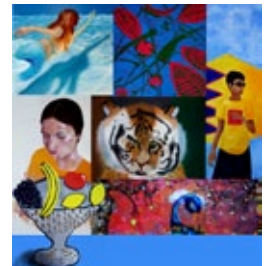
Retrospective exhibition of oil and watercolour sketches and paintings.

1pm-6pm (Thu 11-8pm)
48 Howard Street
OX4 3BE
07969 292435

12 13 14 15 16 17 18 19 20

304 Artworks

Various



Approx 300 beautiful pieces by talented 7 to 18 year olds and their tutors. Come and be surprised. 10am-4pm (Sat/Sun 10-6pm)

End of Bedford Street
Meadow Lane
OX4 1SU. 07754 736078
www.artworks.org.uk

W | P | NS

12 13 14 15 16 17 18 19 20

305 St Mary and St John Primary School

Various



A beautiful and varied collection. Showcasing artwork made by students, parents and staff.

10am-4pm
St Mary & St John CE Primary School, Meadow Lane
OX4 1SU. 01865 723841
www.ssmj.oxon.sch.uk

W | P | NS

12 13 14 15 16 17 18 19 20

306 Helle Christensen

Ceramics



Hand-made ceramics, wheel-thrown or built from moulded slabs. Mugs, cups, tea bowls, plates.

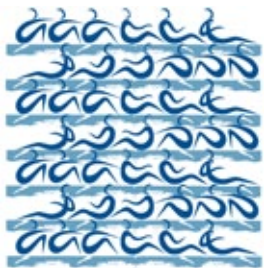
11am-6pm
18 Chester Street
OX4 1SN
07840 232444

tinyurl.com/y7vdhnpj

W | OS

12 13 14 15 16 17 18 19 20

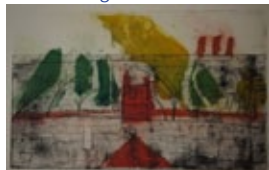
307 Annabel Eyres
Mixed Media



Mixed media exhibition of paper cuts and prints of the human form in motion.
11am-6pm
5 Chester Street
OX4 1SL
07770 942622
www.rock-the-boat.co.uk

12 13 14 15 16 17 18 19 20

308 Caroline Maas OAS
OPC WOA
Printmaking



Etchings, colour, multiplate; some very local, some large, water, land & city.
12-5.30pm
(Sun 2-5.30, Fri 12-8)
70 Stratford St
OX4 1SW
01865 241290
www.carolinemaas.co.uk

12 13 14 15 16 17 18 19 20

309 Magdalen Road Artist Studios
Various

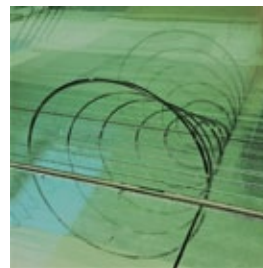


Nine studio and associate artists from Magdalen Road Studios showing a variety of work in new gallery space.
11am-5pm
74-77 Magdalen Road
OX4 1RE
magdalenroadstudios.com

OS | P

12 13 14 15 16 17 18 19 20

313 Cally Shadbolt
Miscellaneous

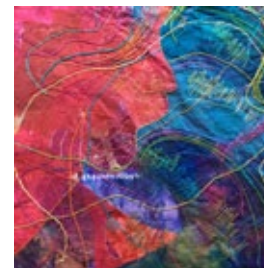


Perspective, reflection, parallax and other ocular diversions. Devices and projections of visual philosophy.
12pm-8pm (Sun 11-5pm)
17 Leopold Street
OX4 1PS
cally.shadbolt@gmail.com

OS

12 13 14 15 16 17 18 19 20

314 Prinkie Roberts
Textiles



Hand-stitched textiles using layers of vibrant silks, other fabrics and threads: on figurative, natural and abstract themes.
2pm-6pm
74 St Mary's Rd
OX4 1QD
07557 273438
www.prinkieroberts.com
W

12 13 14 15 16 17 18 19 20

315 Sue Lyons
| Philip Burbidge
Various



A fusion of media, styles and subjects: visit us in our 'art grotto'!
12-7pm (Thu 12-8pm, Sat/Sun 12-6pm)
The Fir Tree Pub
163 Iffley Road
OX4 1EJ
01865 245290
www.thefirtree.com

12 13 14 15 16 17 18 19 20

310 Magdalen Road Church
Photography



Crowd-sourced exhibition from the local community on the theme of 'Surprise'. Free refreshments.
1pm-5pm
Magdalen Road Church
41a Magdalen Road
OX4 1RB
www.lifestoryoxford.uk

W | R | NS
12 13 14 15 16 17 18 19 20

311 OutlineVine
Various



A collection of work by a collection of artists exploring identity through 3D, photography, drawing and more.
1pm-5pm
Magdalen Road Church
41A Magdalen Road
OX4 1RB
07940 465727
lawrieminty@googlemail.com

W | NS
12 13 14 15 16 17 18 19 20

312 Claire Acworth
Jewellery



Claire is a designer-maker of contemporary silver jewellery. Influenced by nature, her work is organic and sculptural.
11am-6pm (Thu 11-8pm)
14 Hertford Street
OX4 3AJ
07765 251531
claireacworthjewellery.co.uk

OS | D | R
12 13 14 15 16 17 18 19 20

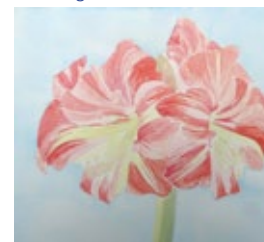
316 Arts Cloister Gallery
Various



18 artists exhibiting in a Grade II Victorian cloister garden of St John the Evangelist Church. A secluded gem in the heart of East Oxford. 12-6pm (Thu 12-8.30, Sun 2-5pm)
St John the Evangelist Church
109A Iffley Road, OX4 1EH
01865 613507
www.sje-oxford.org

W | D | T
12 13 14 15 16 17 18 19 20

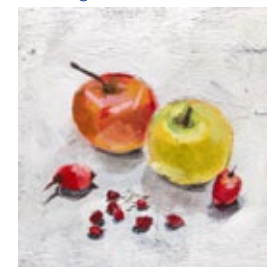
317 Juliet Chadwick
Painting



Colourful paintings of landscapes and people using oil paints and watercolours.
12-6pm (Thu 12-8.30; Sun 2-5pm)
St John the Evangelist Church
109A Iffley Road
OX4 1EH
01865 613507
www.sje-oxford.org

W | D | T
12 13 14 15 16 17 18 19 20

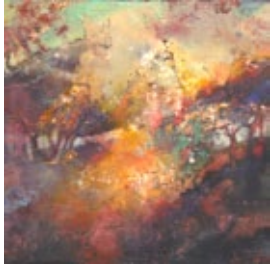
318 Emma Davis
Painting



Still lifes meet the abstract.
12-6pm
(Thu 12-8.30, Sun 2-5pm)
St John the Evangelist Church
109A Iffley Rd
OX4 1EH
07767 862540
www.emmadavispainting.com

W | D | T
12 13 14 15 16 17 18 19 20

319 Penelope Fulljames
OAS *Drawing, Painting*



Oils painted with luminosity and depth loosely based on the effects of light in landscape.
12-6pm (Thu 12-8.30, Sun 2-5pm)
St John the Evangelist Church
109A Iffley Road, OX4 1EH
07581 837910
penelopefulljames.com
W|D|T

12 13 14 15 16 17 18 19 20

320 Caroline Harben
Mixed Media, Painting



Exhibiting in St John the Evangelist Church. New paintings of local and international landscapes, selected for their line and colour.
12-6pm (Thu 12-8.30, Sun 2-5pm)
St John the Evangelist Church
109A Iffley Road
OX4 1EH
07961 068048
carolineharbenartist.co.uk
W|D|T

12 13 14 15 16 17 18 19 20

321 Sandra Hoeft
Mixed Media



Abstract landscape paintings and drawings that explore the relationship between line, shape and colour.
12-6pm (Thu 12-8.30, Sun 2-5pm)
St John the Evangelist Church
109A Iffley Road
OX4 1EH
01865 613507
www.sje-oxford.org

W|D|T
12 13 14 15 16 17 18 19 20

325 Stella Campion
Jewellery



Stella Campion, Oxford's finest designer silversmith, in her own studio.
11am-6pm
Cowley Road Workshop
100A Cowley Road
OX4 1JE
01856 790867
www.stellacampion.co.uk

OS (12-25 May)
12 13 14 15 16 17 18 19 20

326 Rahima Kenner OAS
OPC WOA
Painting, Printmaking



Colourful, contemporary monoprints, etching & painting, both figurative & abstract. New venue: Stella Campion's goldsmith's studio.
11am-6pm
Cowley Road Workshop
100A Cowley Rd, OX4 1JE
01865 723410
www.rahimakenner.com

OS|T
12 13 14 15 16 17 18 19 20

327 Philippa Norris
Ceramics, Pottery



Simple porcelain slip-cast vessels and objects using coloured clays.
11am-6pm
Cowley Road Workshop
100A Cowley Road
OX4 1JE
01865 514670
philippanorrisceramics.co.uk

OS
12 13 14 15 16 17 18 19 20

322 Laura Laube
Various



Moody jesters, gargoyles and some nudes. Spiritual art, healing symbols and transactional analysis ego states.
12-6pm (Thu 12-8.30, Sun 2-5pm)
St John the Evangelist Church
109A Iffley Road
OX4 1EH
07863 744699
lauratantra1.wixsite.com/arts

W|D|T
12 13 14 15 16 17 18 19 20

323 Rose Wallace CPA
Ceramics



Ceramic 'flatback figures' crafted from casts of contemporary packaging & vintage discarded domestic ephemera plus pottery workshop.
12-6pm (Thu 12-8.30, Sun 2-5pm)
St John the Evangelist Church
109A Iffley Road, OX4 1EH
07732 343666
rosewallaceceramics.co.uk
W|D|T

12 13 14 15 16 17 18 19 20

324 Watt and Norris
Conservation
Ceramics



Conservation and restoration of art objects and antiquities.
11am-3pm
Cowley Road Workshop
100A Cowley Road
OX4 1JE
07500 956692
www.ceramicconservation.com
OS|NS

12 13 14 15 16 17 18 19 20

328 Stanford University
Digital Art



Stanford University in Oxford are hosting local artists in their recently refurbished building on the High Street.
10am-5pm
Stanford University Centre in Oxford
Stanford House
65 High Street
OX1 4EL
07920 763231
sharon.scott@stanford.edu

NS
12 13 14 15 16 17 18 19 20

329 Robert Farrands
Photography



Dreamscapes. Experiments in heightening perception by making the familiar strange through playing with ideas of photographic realism.
10am-5pm
Stanford House, 65 High Street
OX1 4EL
01865 777919
figure-ground.photography
OS

12 13 14 15 16 17 18 19 20

330 Oxford Printmakers
Co-operative *Printmaking*



Atmospheric dynamic printmaking studio &, colourful work. See artists making etchings, screenprints, woodcuts & more.
11-5pm (Mon 4-7.30, Tue 10.30-6.30)
Christadelphian Hall, Tyndale Rd, OX4 1JL. 01865 726472
oxfordprintmakers.co.uk

W|OS|D
12 13 14 15 16 17 18 19 20

331 Philippa Redman
Painting



Watercolour, pastel and oil paintings, full of shape and colour.
2pm-6pm (Sat/Sun 12-7pm)
17 Tyndale road
St Clements
OX4 1JL
01865 243249
philippa.redman@tesco.net

OS

12 13 14 15 16 17 18 19 20

332 Sara Banerji
Various



Graceful, comic and sometimes glittering sculptures and paintings using my unique (and secret) formula.
4pm-6pm (Sat/Sun 11-6pm)
7 London Place
St Clements
OX4 1BD
01865 251250
www.sarabanerji.com

OS|D|R|T

12 13 14 15 16 17 18 19 20

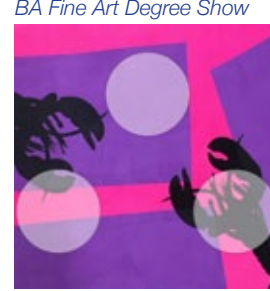
333 St Clement's Church, Oxford
Various



Artwork from the congregation and friends, space to reflect in a historic building and encouragement to create. Sat 12-4pm, Sun 1-3pm, Fri 5-8pm
St Clement's Church
Marston Road, OX4 1BG
07941 807335
www.stclements.org.uk
W|R|T|P|NS

12 13 14 15 16 17 18 19 20

337 Oxford Brookes: Hoi Polloi
BA Fine Art Degree Show



A diverse group exhibition showcasing exciting emerging talent, from painters to video and installations artists.
11am-6pm (Thu 11-9pm)
Oxford Brookes University
Richard Hamilton Building
Headington Road, OX3 0BP
brookesartists@gmail.com
W|NS

12 13 14 15 16 17 18 19 20

338 Kit Adlington OCG
Pottery

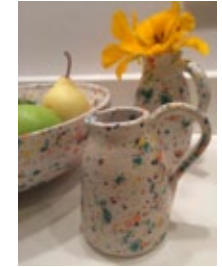


Thrown functional stoneware pottery with vibrant glazes, exhibited in small working studio. On-site parking.
11am-6pm
5 Feilden Grove
Headington OX3 0DU
01865 769121
www.ocg.co.uk

OS|P

12 13 14 15 16 17 18 19 20

339 Vivien Sieber
Pottery



Hand-thrown functional ceramics for use around the home.
11am-6pm
66 Staunton Road
Headington
OX3 7TP
01865 744481
viviensieber.eu/vivspots

OS|R|P

12 13 14 15 16 17 18 19 20

334 Anthony Eccles OCG
Ceramics



Japanese wood fired and colourful, abstract, painterly pots. Good parking very nearby.
11am-6pm (Thu 11-8pm)
128 Southfield Road
OX4 1PA
07810 472995
anthonyecclesceramics.co.uk
T|P

12 13 14 15 16 17 18 19 20

335 Julia Engelhardt
Textiles



Weavescapes: small evocative woven panels for wall display.
11am-6pm (Thu 11-8pm)
Anthony Eccles' Studio
128 Southfield Road
OX4 1PA
07980 988440
f / [JuliaEngelhardtWeavescapes/](https://www.facebook.com/JuliaEngelhardtWeavescapes/)

12 13 14 15 16 17 18 19 20

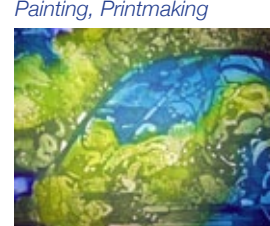
336 Margaret Quon
Jewellery



I am a jewellery designer and maker: simple, elegant and tactile pieces with precious elements handmade in Oxford.
11am-6pm (Thu 11-8pm)
Anthony Eccles' Studio
128 Southfield Road, OX4 1PA
07791 196594
mbymargaretquon.etsy.com

12 13 14 15 16 17 18 19 20

340 Jackie Conway OAS OPC
Painting, Printmaking



Paintings and etchings of Headington area.
11am-6pm (plus eves)
The Corridor Gallery (level 3)
John Radcliffe Hospital
Headley Way
OX3 9DU
07842 213278
jackiemconway@yahoo.co.uk

W|R|P (5-28 May)
12 13 14 15 16 17 18 19 20

341 Marieke O'Connor
Ceramics



Unusual stoneware & porcelain pots, boldly decorated & imprinted with lace. Part of Art at St Andrew's in beautiful church setting. 12pm-6pm
St Andrew's Church
St Andrew's Road
Old Headington OX3 9DL
01865 432528
marieke.oconnor@gmail.com
W|R|P

12 13 14 15 16 17 18 19 20

342 Art at St Andrew's
Various



8 wonderful artists: jewellery, textiles, ceramics, mosaics & painting. Jewellery & mosaic workshops. Knitted rag rug demos.
12-6pm
St Andrew's Church
St Andrew's Road
Old Headington OX3 9DL
01865 750121
artatstandrews@gmail.com

W|D|R|T
12 13 14 15 16 17 18 19 20

343 Robin Danely

Painting



Modern portraits, colourful abstracts and dynamic still life — something for everyone!
 Mon 10-1pm, Tue/Thu 12-6, Fri 11-5, Sat 10-4.30
 Headington Library, North Place
 Headington OX3 9HY
 01865 762867
oxfordshire.gov.uk/cms/content/headington-library
 W|P

12 13 14 15 16 17 18 19 20

344 Harriet Eagle OAS WOA

Various



Harmonious oil paintings & drawings of scenes & settings that have inspired me, from wild seascapes to the more considered still-life.
 12-6pm (Thu 12-8pm)
 24 Stephen Road
 Headington OX3 9AY
 01865 762681
www.harrieteagle.com

12 13 14 15 16 17 18 19 20

345 Robyn Hardyman

Ceramics

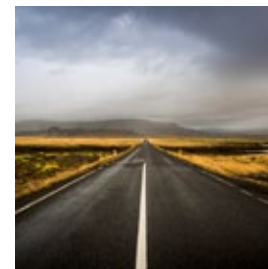


Wheel-thrown ceramics in porcelain and stoneware, subtly glazed for use or decoration.
 12-6pm (Thu 12-8pm)
 24 Stephen Road
 Headington OX3 9AY
 01865 762681

12 13 14 15 16 17 18 19 20

349 Karen Morecroft

Photography, Printmaking

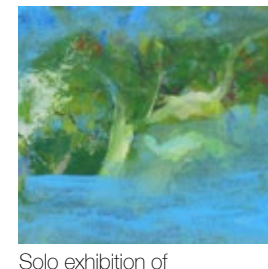


Exhibition featuring photography and printmaking along the themes of the landscape and travel. 8am-6pm
 12-6pm (Sat/Sun 10.30-2.30pm)
 NOC Gallery,
 Nuffield Orthopaedics Centre
 Outpatients, Windmill Road
 Headington OX3 7HE
www.karenmorecroft.com
 W|R|P (6-28 May)

12 13 14 15 16 17 18 19 20

350 Jane Strother OAS

Painting



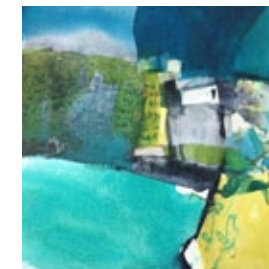
Solo exhibition of contemporary artwork in my garden studio. Oils, acrylics, varied print techniques. Parking, evenings and weekends.
 12-6pm (Thu 12-8pm)
 101 Old Road, Headington
 OX3 8SX. 07505 214795
www.janestrother.co.uk

OS|T|P

12 13 14 15 16 17 18 19 20

351 Ella Clocksin

Painting

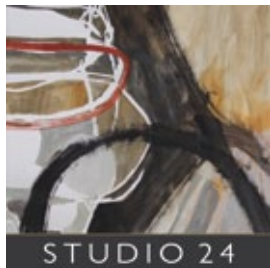


Strong contemporary watercolour/mixed media abstract landscape & visual haiku paintings. Park weekdays on Quarry Rd; weekends on York Ave.
 12-6pm (Thu 12pm-8pm)
 26 York Avenue, Headington
 OX3 8NS. 01865 766263
www.ellaclocksin.com
 W|T|P

12 13 14 15 16 17 18 19 20

346 Deborah Laidlaw OAS

Drawing, Painting



A personal exploration of painting and drawing from realism to abstraction.
 12-6pm (Thu 12-8pm)
 24 Stephen Road
 Headington
 OX3 9AY
 01865 762681
deborahlaidlaw1@gmail.com

12 13 14 15 16 17 18 19 20

347 Martin Smith OAS

Sculpture



Highly finished and inventive stone sculptures, mainly suitable for outdoor display, in an exhibition with three other professional artists.
 12-6pm (Thu 12-8pm)
 24 Stephen Road
 Headington OX3 9AY
 07771 980758
martinsmithsculpture.co.uk
 W

12 13 14 15 16 17 18 19 20

348 Gilly Whittington

Ceramics



Porcelain with colourful ash glazes, both beautiful and functional.
 11am-6pm
 25 Bateman Street
 Headington
 OX3 7BG
 07580 733760
www.gillywhittington.com

OS|D

12 13 14 15 16 17 18 19 20

352 Katherine Turner OAS

Mixed Media



'A Celebration of Trees' and colourful landscapes.
 12-6pm
 Hunters Lodge
 145 Old Road
 (foot of Shotover Hill)
 Headington OX3 8SZ
 01865 761675
hnk.turner@gmail.com

OS

12 13 14 15 16 17 18 19 20

353 Mazz Image

Photography



Near and Far: displayed for first time in new artist workshop & open air gallery garden. (Call or check website for special events.)
 11am-6pm
 29 Pitts Road
 Headington Quarry
 OX3 8BA. 07875 515499
www.mazzimage.com
 W|OS|D|R|T|P (5-28 May)

12 13 14 15 16 17 18 19 20

354 Anne Blackman

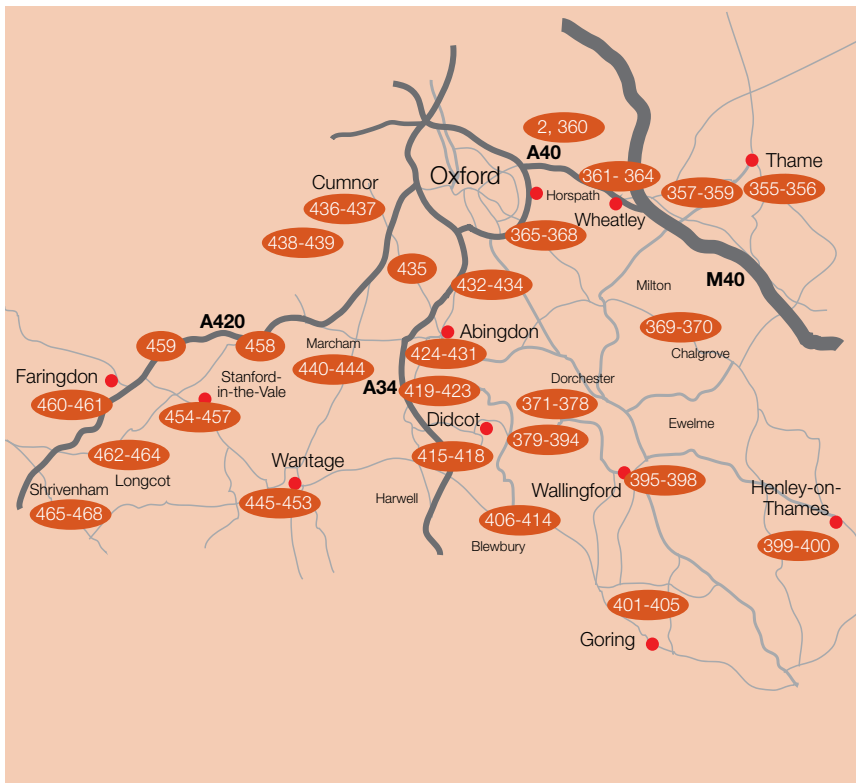
Painting



Exhibition of vibrant still life and lovely Oxfordshire landscapes.
 11am-6pm
 24 Quarry High Street
 Headington
 OX3 8JX
 01865 763624
dandablackman@uwclub.net

R|P

12 13 14 15 16 17 18 19 20



South Oxfordshire Map

This map is to provide approximate guidance only. Please use the venue addresses provided with a road map or SatNav to locate specific exhibitions.

Additional Information

Visit the Artweeks website to see, for many exhibitors, further details, artist biographies, additional pictures of artists' work and to check for any changes and updates.

Local Area Trails

Some groups of artists, coordinated by local volunteer organisers, have put together more detailed trail maps to help you navigate from venue to venue. Many of these can be downloaded at www.artweeks.org

355 Christine Tacq | Heather Hunter
Paper



Fantastic variety of books made by artists in a working printmaking studio. 11am-6pm
2 Essex Rd
Thame OX9 3LT
07539 486233
christinetacq.blogspot.com

W | OS | D | P
19 20 21 22 23 24 25 26 27 28

358 Susan Fonge | Katie Arnold
Various



Unusual useful ceramics engraved glass based on nature, & modern flower-based textiles. 12pm-6.30pm
The Stable Gallery
Old Dairy Cottage, Manor Farm
Waterperry OX33 1LB
07935 721322
susanglass@hotmail.co.uk

OS | D | R | T | P
19 20 21 22 23 24 25 26 27 28

356 Bates and Lambourne
Furniture



Wonderful furniture & other pieces made from English hardwoods. Finished pieces & work in progress to see in our workshops. 10am-5pm (Sat/Sun 11am-4pm)
The Camp Industrial Estate
Rycote Lane, Milton Common
OX9 2NP 01844 278978

batesandlambourne.co.uk
W | OS | P
19 20 21 22 23 24 25 26 27 28

359 Alison Court | Jane Hanson OCG
Ceramics, Textiles



Textile bags & cushions of bright recycled designer fabrics & functional pottery with colourful mixtures of painted stoneware glazes. 12pm-6pm (Thu 12-8pm)
Church Farmyard, Church End
Waterstock OX33 1JR
07725 059511
janebots@gmail.com

W | OS | R | T | P
19 20 21 22 23 24 25 26 27 28

357 Kit Arnold | Kari Orrom
Ceramics, Painting



Animal and landscape inspired prints, quirky fun acrylic paintings & colourful ceramics. 12pm-6.30pm
The Stable Gallery
Old Dairy Cottage, Manor Farm
Waterperry OX33 1LB
07935 721322
susanglass@hotmail.co.uk

OS | D | R | T | P
19 20 21 22 23 24 25 26 27 28

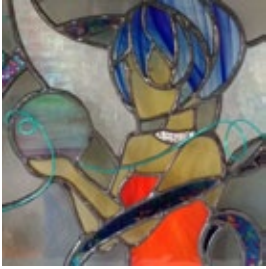
360 The Otmoor Collective
Various



An exciting, eclectic mix of cutting edge work curated by The Otmoor Collective in a beautiful Oxfordshire village setting. 10.30am-5pm
Beckley Village Hall
Woodperry Road, Beckley
OX3 9UZ. 07725 626234
theotmoorcollective.tumblr.com

W | D | R | P
19 20 21 22 23 24 25 26 27 28

361 Jackie Birchall of Purple Urchin
Glass



Copper-foiled stained glass in studio & cottage garden. Original & quirky, guaranteed to bring a smile.
11am-6pm
Ambrose Cottage
Holton nr Wheatley, OX33 1PS
07773 623973
purpleurchin.online

OS | D | P
19 20 21 22 23 24 25 26 27 28

362 Christine Erica Bainbridge
Painting



Iconic trees, mountains, abstracts, coast and seas, art activities and wonderful teas!
11am-6pm
3 Barns Close
Holton nr Wheatley
OX33 1QB
01865 872868
christineericabainbridge.co.uk

OS | R | P
19 20 21 22 23 24 25 26 27 28

363 Art at The Manor
Various



Seven local artists show a range of artistic styles & techniques at historic Wheatley Manor.
11am-6pm
The Manor House
The High Street
Wheatley OX33 1XX
07742 498709
deborah.joy.wilson@gmail.com
www.wheatleymanor.co.uk

W
19 20 21 22 23 24 25 26 27 28

367 J B Lowe
Painting



A garden exhibition of large modern abstract paintings.
12pm-6pm
72 Wheatley Road
Garsington OX44 9ER
01865 361836
www.jblowe.co.uk

19 20 21 22 23 24 25 26 27 28

368 Christine Green | Rosie Endor | Nicko King
Mixed Media, Painting



Cards, prints, paper cuts & watercolours showing land & seascapes, still lifes & Oxford scenes, in rural setting with hens and ducks.
11am-6pm
The Barn, 12 The Green
Cuddesdon OX44 9JZ
01865 873721
nicko.king@btinternet.com
P

19 20 21 22 23 24 25 26 27 28

369 Claire Florey-Hitchcox
Printmaking



Fine wood block carvings, prints & wallpaper. Studio printing press demonstrations. Free tea & cakes in the garden.
12-6pm (Thu/Fri 12-7pm)
Chequers Cottage
Stadhampton/Newington nr Chalgrove OX10 7AW
01865 890080
clairefloreyhitchcox.wix.com/print
W | OS | D | R | P

19 20 21 22 23 24 25 26 27 28

364 FoWL Art & Craft
Various



Paintings & crafts by Friends of Wheatley Library Art & Craft Groups. Sat 9.30-1pm, Tue 2-7pm, Wed 9.30-1&2-5, Thu 2-5pm, Fri 9.30-1&2-6.
Wheatley Library
The Merry Bells, High Street
Wheatley OX33 1XP
01865 875267
wheatleylibrary.org/craft

W | D | P | NS
19 20 21 22 23 24 25 26 27 28

365 Jeanne Jackson OCG
Ceramics



Professional potter shows hand-painted items in cottage garden studio.
11am-6pm (Thu 11-8pm)
Shepherds Cottage Pottery
2 Blenheim Road
Horspath OX33 1RY
01865 876647
jeannejackson.co.uk

W | OS | D | R | P
19 20 21 22 23 24 25 26 27 28

366 Melissa Orrom Swan
Various



The Shed Space: wonderful, unique sculptures in wire & ciment fondué for garden & indoors; collographs, monoprints & greetings cards.
11.30-6pm (Wed 11.30-4pm)
31 College Way
Horspath OX33 1SQ
01865 874532
melissaorromswan.co.uk

OS | P
19 20 21 22 23 24 25 26 27 28

370 Art at Chalgrove Church
Various



An interesting collection of art alongside famous wall paintings in a fine 13th century church.
11am-6pm
St Mary's Church
Church Lane
Chalgrove OX44 7SD
01844 358047
jrdunkley@hotmail.com

W | R | P
19 20 21 22 23 24 25 26 27 28

371 Robin McClelland
Ceramics



Exciting hand-built stoneware pottery, sculptural and architectural.
12pm-5pm (Fri 12-8pm)
Vintners Lodge
2 Warborough Road
Shillingford OX107SA
01865 858512
robin.mcclelland@vintnerslodge.net

19 20 21 22 23 24 25 26 27 28

372 Adrian Brooks
Mixed Media



Light, Sound, Action! 'Travel Theatres' are wall mounted painted theatres with narrative and biographical themes.
11am-5pm (Mon 21st/Tue 1-5)
5 Samian Way
Dorchester-on-Thames nr Wallingford OX10 7JS
01865 340792
www.traveltheatres.co.uk

OS
19 20 21 22 23 24 25 26 27 28

373 Christine Ellis
Jewellery



Original, handmade silver jewellery. 12pm-6pm
Plough House
1 Abingdon Road
Dorchester-on-Thames
OX10 7JY
07962 164600
chrisellis@hotmail.com

W | R

19 20 21 22 23 24 25 26 27 28

374 Debbie Farrell
Mixed Media, Textiles



Beautiful handmade embroidered panels from the heart of rural Oxfordshire. Landscapes. 12pm-6pm
Plough House
1 Abingdon Road
Dorchester-on-Thames
OX10 7JY
07957 663807
www.debbiefarrell.co.uk

W | R

19 20 21 22 23 24 25 26 27 28

375 Claire Houghton
Textiles



A festival of textiles and yarns used to create unique handbags and designer knitted garments. 12pm-6pm
Plough House
1 Abingdon Road
Dorchester-on-Thames
OX10 7JY
01865 340012

W | R

19 20 21 22 23 24 25 26 27 28

379 Sylva Foundation Wood Centre
Various



Original furniture, unusual art and wonderful boats made in, or inspired by, wood and nature. 10am-5pm
Sylva Wood Centre
Little Wittenham Road
Long Wittenham
OX14 4QT
01865 408018
www.sylva.org.uk/wood

W | OS | D | R | T | P

19 20 21 22 23 24 25 26 27 28

380 Art @ Earth Trust
Various



A diverse collection of art celebrating the landscape around us, displayed in our beautiful barn and courtyard. Refreshments available. 11-4pm (Mon 21st-Fri 11-3pm)
Earth Trust
Little Wittenham
OX14 4QZ
01865 407792
www.earthtrust.org.uk

W | OS | R | P

19 20 21 22 23 24 25 26 27 28

381 Susan Ganney
Painting



Susan Ganney paints in mixed media creating contemporary local landscapes and studies from nature. 11-4pm (Mon 21st-Fri 11-3pm)
The Earth Trust
Little Wittenham
OX14 4QZ
01865 407792
www.susanganney.com

W | R | P

19 20 21 22 23 24 25 26 27 28

376 Peter Allan
Ceramics



Impressed ceramic wall hangings in wooden frames. 9am-10pm
The White Hart Hotel
High Street
Dorchester-on-Thames
OX10 7HN
07791 304919
p.allan@btinternet.com

W | R | P (5-28 May)

19 20 21 22 23 24 25 26 27 28

377 Dorchester Artists
Various



Eight Dorchester artists showing a variety of art in the historic Abbey Guesthouse. 10-5pm (25-27th 10-4pm)
The Abbey Guest House
High Street, Dorchester-on-Thames. OX10 7HH
01865 341486
sophiastewartliberty@gmail.com

R | P

19 20 21 22 23 24 25 26 27 28

378 Sophia Stewart Liberty | Tamsin John
Ceramics, Painting



Sophia & Tamsin met at art school. The former paints with watercolours, the latter makes pots. Both are inspired by the natural world. 12pm-5pm
66 High Street
Dorchester-on-Thames
OX10 7HN
01865 341486
sophiastewartliberty.com

P

19 20 21 22 23 24 25 26 27 28

382 Denny Webb OAS
Painting

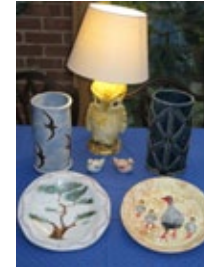


Expressive paintings of the local landscape, wildlife, flora & fauna around the Wittenham Clumps. 11-4pm (Mon 21st-Fri 11-3pm)
Earth Trust
Little Wittenham
OX14 4QZ
01491 680942
www.dennywebb.com

W | R | P

19 20 21 22 23 24 25 26 27 28

383 Clare Owen
Ceramics



Eclectic mix of mostly hand-built large & small jars, lamps, plates & other vessels, often showing images taken from nature. 11am-5pm (Tue-Fri 2-5pm)
42 Little Wittenham Road
Long Wittenham
OX14 4QS
01865 407654
OS | R | P

OS | R | P

19 20 21 22 23 24 25 26 27 28

384 Gillian Diggle | Sarah Marchant | Hester Robinson-Spoon
Ceramics, Jewellery



Hand-built original ceramics, beautiful jewellery and silver spoons. Adjacent to Jane Duff. 11am-6pm (Thu 11-8pm)
The Art Studio, The White Cottage, Little Wittenham
OX14 4RA. 07962 014845
www.lwljewellery.co.uk

W | R | P

19 20 21 22 23 24 25 26 27 28

385 Jane Duff*Painting*

Recent paintings of Oxfordshire landscapes & west country seascapes. Large studio in lovely garden with tea & cakes.
11am-6pm (Thu 11-8pm)
The White Cottage
Little Wittenham, OX14 4RA
01865 407056

www.janeduff.co.uk

W|OS|R

19 20 21 22 23 24 25 26 27 28

386 Flick Whitehead*Printmaking*

Original artwork, screenprints, linocuts and etchings. Open working studio.

10am-4pm (Fri 10-3pm)

34 Greenmere

Brightwell-cum-Sotwell
OX10 0QQ

07894 225904

littleouhouseprints.co.uk

OS|R

19 20 21 22 23 24 25 26 27 28

387 Bruce Bignold*Painting*

Landscapes and some portraits lovingly splashed in acrylics on various sized canvases.

10am-5pm

Stewart Village Hall

Brightwell-cum-Sotwell
nr Wallingford OX10 0RY
01865 326174bignold-paintings.com

W|P

19 20 21 22 23 24 25 26 27 28

391 Karena Richens**| Jessica Reynolds***Painting*

Jessica's preferred medium is oil. Colour & light feature strongly in her work. Karena paints with oils & enjoys painting from life.

10am-5pm

Stewart Village Hall

Brightwell-cum-Sotwell
nr Wallingford OX10 0RY

W|P

19 20 21 22 23 24 25 26 27 28

392 Louise Shepherd**| Judith Payne***Painting*

Colourful local & Cornish landscapes; lively acrylics and botanical watercolours.

10am-5pm

Stewart Village Hall

Brightwell-cum-Sotwell
nr Wallingford OX10 0RY

W|P

19 20 21 22 23 24 25 26 27 28

393 John Stephen OAS*Digital Art*

Insects and other small animals from memories of my work as a zoologist.

10am-5pm

Stewart Village Hall
Brightwell-cum-Sotwell
nr Wallingford OX10 0RYwww.carabus.me

W|P

19 20 21 22 23 24 25 26 27 28

388 Valerie Dearlove*Painting*

I am primitive outsider self-taught artist.

10am-5pm

Stewart Village Hall

Brightwell-cum-Sotwell

nr Wallingford

OX10 0RY

01235 530772

vdearlove@hotmail.co.uk

W|P

19 20 21 22 23 24 25 26 27 28

389 John Hailstone*Photography*

Spiritual photographic giclée prints of the willows near the Thames at Wallingford alongside other natural images.

10am-5pm

Stewart Village Hall

Brightwell-cum-Sotwell

nr Wallingford OX10 0RY

www.impphoto.com

W|P

19 20 21 22 23 24 25 26 27 28

390 Donae Lerwill*Painting*

I see an image I like and I try to paint it.

10am-5pm

Stewart Village Hall

Brightwell-cum-Sotwell

nr Wallingford OX10 0RY

W|P

19 20 21 22 23 24 25 26 27 28

394 All Saints Artists*Various*

Art created by local artists exhibited in beautiful 13th-century village church. Demos on certain days & teas served daily. 11am-6pm

www.victoriasquires.co.uk

W|OS|D|R|P

19 20 21 22 23 24 25 26 27 28

395 Everyone's An Artist*Various*

The garden of mystery & suspense. Amazing fun installations & performances with Clare Carswell.

11-6pm (Fri 18th 11am-9,
Sat 11-10pm)

51 Wantage Road

Wallingford OX10 0LS

07748 966403

janey.carline@ntlworld.com

W|OS|R|P|NS

19 20 21 22 23 24 25 26 27 28

396 Ruby Hutton*Various*

Ruby was last year's youngest exhibitor & the experience has galvanised a strong connection with Artweeks & the community it promotes.

11am-6pm

57 Park View
Crowmarsh Gifford
Wallingford OX10 8BN
01491 834861

19 20 21 22 23 24 25 26 27 28

397 Richard Carruthers
Painting

Figurative painting & material drawn from the wonderful Oxfordshire countryside, still life & travels in Britain & abroad.

11am-6pm
1 The Street
North Stoke
nr Wallingford OX10 6BL
01491 835833
W|OS|P

19 20 21 22 23 24 25 26 27 28

398 Julie Grose OCG
Sculpture

Sculptural blacksmith creates unique works to commission. Studio visits by appointment. Also showing at Earth Trust.

11am-4pm
Unit 2, Warrenhill Farm
Nuffield Lane
Wallingford OX10 6QN
07960 192475
juliegrosemetaldesign.co.uk
W|OS|P

19 20 21 22 23 24 25 26 27 28

399 John Parrey
Jewellery, Sculpture

Wall sculpture in oak and hand-made silver jewellery; arts & craft cottage next to Pub.

11am-6pm
2 Blue Cottages
Reading Road, Shiplake
nr Henley-on-Thames
RG9 4BY
01189 402471
www.johnparrey.co.uk

19 20 21 22 23 24 25 26 27 28

403 Harry Megaw
Painting

Oil landscapes in UK, Provence and Morocco, still life & figures, displayed in 17C barn on roadside ½ mile south of Moultsford on A329. 11am-6pm (Thu/Fri 2-8pm)

Streatley Farmhouse
Wallingford Road
Streatley RG8 9PT
07429 593567

harry_megaw@hotmail.com

W|R|P

19 20 21 22 23 24 25 26 27 28

404 Martin Hayward-Harris
Sculpture

Studio and garden in an area of outstanding beauty. Sculpture and printmaking of nature.

11am-6pm
36 Underhill
Moultsford
nr Wallingford OX10 9JH
01491 652006
www.hayward-harris.co.uk
W|OS|D|R|T|P

19 20 21 22 23 24 25 26 27 28

405 Roberta Tetzner
| **Isobel Pigott**
| **Malcolm West**
Painting, Sculpture

'Abundance of Colour'. Vibrant paintings, scarves, cushions. Figurative sculptures. Beautiful designer garden. 11am-5pm

Field View
Aldworth RG8 9SB
01635 579096
www.isobelpigott.co.uk
W|D|P

19 20 21 22 23 24 25 26 27 28

400 River & Rowing Museum
Various

Young people's work inspired by Museum's collection & current exhibition of Barbara Hepworth's sculpture.

10.30am-4pm
Mill Meadows
Henley-on-Thames
RG9 1BF
01491 415607
rrm.co.uk
W|R|T|P|NS

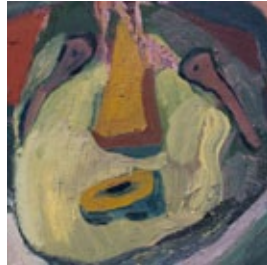
19 20 21 22 23 24 25 26 27 28

401 Ann Spencer OPC
Various

Painting and printmaking inspired by English life. Come and hear the stories and drink the tea!

11am-4pm
34 Lockstile Way
Goring-on-Thames
RG8 0AL
07763 812199
annspencer.crevado.com
R|T|P

19 20 21 22 23 24 25 26 27 28

402 Daniel Leyland
Painting

Emerging artist making paintings informed by comparative mythology & folk culture, describing themes of sexuality, memory & masculinity.

12pm-6pm (Fri 2-8pm)
Beech Down, Elmhurst Road
Goring-on-Thames
RG8 9BN. 01491 871222
www.dannyleyland.com
OS|R|P

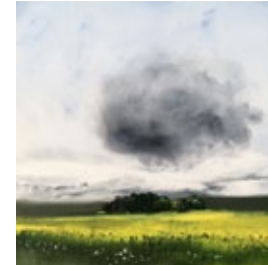
19 20 21 22 23 24 25 26 27 28

406 Ken Messer
Painting

Watercolours of the local area & Wales. Framed & unframed landscapes & townscapes. Commissions undertaken.

11am-6pm
Twitten (studio), Aston Street
Aston Tirrold nr Didcot
OX11 9DQ
01235 834361
www.kenmesser.co.uk
OS|P

19 20 21 22 23 24 25 26 27 28

407 Lin Kerr OAS WOA
Painting

Contemporary landscape oil paintings of skies and skysongs – sunny or dramatic, large and small.

11am-6pm
Twitten, Aston Street
Aston Tirrold nr Didcot
OX11 9DQ
01235 833119
www.linkerrdesign.co.uk
OS|P

19 20 21 22 23 24 25 26 27 28

408 Susanna Brunskill
Painting

Affordable original paintings, oils & watercolour, in my garden studio. Two other exhibitors here, plus three more close by. Lots to see.

11am-6pm
Twitten, Aston Street
Aston Tirrold nr Didcot, OX11 9DQ
01235 851762
susannabrunskill.uk
OS|P

19 20 21 22 23 24 25 26 27 28

409 Peter Lancaster
469 Victoria Goddard
Painting, Jewellery



Recent still life and landscape oil paintings. Jewellery with gems, enamel & colour. 11am-6pm
Springfield House, Baker Street
Aston Tirrold OX11 9DD
07962 055717
www.lancasterframing.co.uk
f /Victoria-Zoe-GoddardJEWELLERY
W|O|S|D|R|T|P|N|S

19 20 21 22 23 24 25 26 27 28

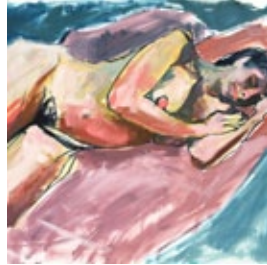
410 Helen J Young
Painting



Recent paintings in oil and cold wax medium. Six artists in lovely village. Other studios nearby.
11am-6pm
Springfield House
Baker Street
Aston Tirrold nr Didcot
OX11 9DD
07598 964286
helenjyoung.com
O|S|P

19 20 21 22 23 24 25 26 27 28

411 Charlotte Houlihan
Painting



Life paintings & studies uncovering the beauty & expression of the human figure. Thoughtful & colourful.
Oils & inks.
10am-6pm
Blewbury Clubhouse
Boham's Road, Blewbury
OX11 9HF. 07787 990716
www.charlottehoulihan.com
W|P

19 20 21 22 23 24 25 26 27 28

415 Lucie Motion
Painting, Printmaking



Various mixed-media paintings using acrylic & oils on raw linen, gold & copper. Prints & etchings. Flora, fauna & landscape.
11am-4pm (Thu 11-7pm)
The Ferret Hutch via Garden Gate at 29 Sycamore Way off Larch Drive, Didcot OX11 6DY
07774 001155
lucie@luciemotion.com
W|O|S|P

19 20 21 22 23 24 25 26 27 28

416 Cornerstone Arts Centre
Various



Cornerstone's Open Exhibition gives artists of all expressions the opportunity to publicly exhibit artwork.
10am-6pm (Sun 11-4pm)
Cornerstone Arts Centre
25 Station Road
Didcot OX11 7NE
01235 515144
www.cornerstone-arts.org
W|P (11-13 15-18 May)

19 20 21 22 23 24 25 26 27 28

417 Robert Strange OAS
Drawing, Painting



Colourful, original and unique award-winning drawings and paintings of ordinary objects made special.
11am-6pm
1 Orchard Way
Harwell Village
OX11 0LQ
01235 820966
www.robert-strange.co.uk

O|S|D|R|P

19 20 21 22 23 24 25 26 27 28

412 Yvette Phillips
Textiles



Beautiful textile collages inspired by nature, using vintage textiles and free-motion machine embroidery to create bold and colourful art.
10am-6pm
Blewbury Clubhouse
Boham's Road, Blewbury
OX11 9HF 07880 700231
www.yvettPhillipsart.com
W|P

19 20 21 22 23 24 25 26 27 28

413 Adrian Smart
Painting



Highly-detailed fine art watercolour paintings often mistaken for photographs by professional award-winning painter.
10am-6pm
Blewbury Clubhouse
Boham's Road, Blewbury
OX11 9HF
07972 236204
ads.smart@btopenworld.com
W|P

19 20 21 22 23 24 25 26 27 28

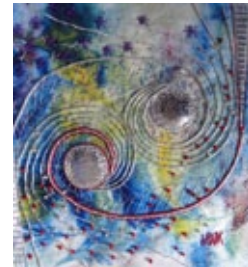
414 Eleanor Wong
Painting



Artist devoted to exploring the free-thinking nature of childhood.
10am-6pm
Blewbury Clubhouse
Boham's Road
Blewbury OX11 9HF
07939 231066
www.eleanorwongart.com
W|P

19 20 21 22 23 24 25 26 27 28

418 Helen Winthorpe Kendrick
Textiles



Framed and 3D pieces of textile art and creative embroidery.
10am-6pm
Milton Hill House Hotel
Milton Hill nr Steventon
OX13 6AF
07745 434933
www.visionsinthread.com
W|D|R|T|P

19 20 21 22 23 24 25 26 27 28

419 Lyn Harrison | Jo Bosley
Ceramics



Quirky and unusual ceramics for the home and garden inspired by the natural world.
11am-6pm
17-21 The Green
Steventon
nr Abingdon OX13 6RR
07714 761638
steventongreenpottery.com
O|S|P

19 20 21 22 23 24 25 26 27 28

420 Mary Reade
Ceramics



Original one-off ceramics for the home and garden exhibited in the studio and cottage garden.
11am-6pm
Laburnum Cottage
33 The Green
Steventon OX13 6RR
01235 831261
O|S|D|P

19 20 21 22 23 24 25 26 27 28

421 Tom Knight | Bunty Knight

Mixed Media, Painting



Paintings of unusual buildings, marine subjects and quirky collectable 'cats eye views', and stunning light catchers. 11am-4pm

Spindles, Church Lane
Drayton nr Abingdon
OX14 4JS
07840 935332
jntknight@outlook.com

OS | R | P

19 20 21 22 23 24 25 26 27 28

422 Nathalie Hamill OCG | Kate Coker OCG

Ceramics, Jewellery



Contemporary silver and gold jewellery by Kate and raku ceramics by Nathalie. 12pm-5pm

5 The Nursery
Sutton Courtenay OX14 4UA
01235 847048
nathaliehamill.com
www.katecoker.co.uk

W | OS | D | P

19 20 21 22 23 24 25 26 27 28

423 Charlotte Storrs

Ceramics, Pottery



Functional stoneware, all wheel thrown. Pottery in beautiful secret garden close to the Thames. Demos throughout the day. 11am-6pm

8 The Green, Culham nr
Abingdon OX14 4LZ
01235 520395
charlottestorrs-stoneware.co.uk

OS | D | R | P

19 20 21 22 23 24 25 26 27 28

427 Oxfordshire Mind

Various



The exhibition 'Visions' invites you to explore our artistic response to visions: experiences, dreams & hopes within our life journeys. 11am-4pm

Mind in Abingdon
The Charter, Broad Street
Abingdon OX14 3LZ
01235 537424
oxfordshiremind.org.uk

W | D | R | NS

19 20 21 22 23 24 25 26 27 28

428 Impey Family

Various



Paintings and prints, studio ceramics and handmade wooden furniture. Exhibition in Victorian barn by the Ock River. 2pm-6pm

New Cutt Mill House
Mill Road, Abingdon OX14 5JZ
01235 524739
thetulipandthebutterfly.com

W | P

(&6-7 May)

19 20 21 22 23 24 25 26 27 28

429 Pop Up Artists Collective

Various



A brilliantly diverse group of artists welcome you to 30 Abbott Rd to explore 'The Colour of Our Dreams'. 11am-4pm (Mon 11-1pm)

30 Abbott Road
Abingdon
OX14 2DU
popupartscollective.co.uk

19 20 21 22 23 24 25 26 27 28

424 Robert Strange OAS

Drawing, Painting



The Squashed Collection. A colourful exhibition of drawings of discarded objects and ephemera collected in boxes. 10am-4pm

Abingdon County Hall Museum
(1st floor)
Market Place
Abingdon OX14 3HG
01235 523703
www.robert-strange.co.uk

(&5-6 8-13 15-20 May)

19 20 21 22 23 24 25 26 27 28

425 Dougie Simpson

Drawing, Painting



Watercolours and pen & wash paintings including scenes of Abingdon, Cornish fishing scenes and aspects of Venice, Italy. 10-4 (Wed 10-7, Fri/Sat 10-5)

St Nicolas' Church, 18-19 Market Place, Abingdon OX14 3HF
07801 742066
dougie.simpson@mac.com

W | D

19 20 21 22 23 24 25 26 27 28

426 The Abbey Group

Ceramics, Painting



Inspired paintings and ceramics by five talented local artists. 10-4 (Wed 10-7, Fri/Sat 10-5)

St Nicolas' Church
18-19 Market Place
Abingdon OX14 3HF
01235 533726
dougie.simpson@mac.com

W

19 20 21 22 23 24 25 26 27 28

430 Fiona Chappelle

Ceramics



Contemporary thrown ceramics by Fi Chappelle: pieces which inject colour and style into your home. 11am-6pm

11 Sellwood Road
Abingdon OX14 1PE
07760 993855
www.fichceramics.com

OS | D | R | P

19 20 21 22 23 24 25 26 27 28

431 Peach Croft Barn Artists

Various



Painters, potters, jewellers, textile artists and a sculptor show their new work. Daily demos at 2pm. 10am-5pm

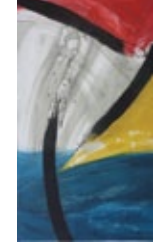
Peach Croft Farm Barn
Twelve Acre Drive
Abingdon OX14 2HP
01235 520936
www.peachcroft.co.uk

W | D | R | P

19 20 21 22 23 24 25 26 27 28

432 Susan Moxley

Printmaking, Jewellery



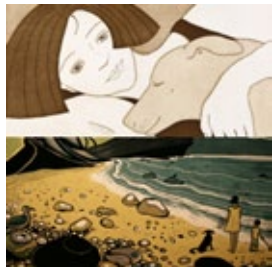
'Crossing the Aegean': new work by printmaker Susan Moxley. 11am-5pm (Sat/Sun 1-4pm)

Sewell Centre Gallery
Radley College
Abingdon OX14 2HR
01235 543039
radley.org.uk/sewell-centre-gallery

W | R | P

19 20 21 22 23 24 25 26 27 28

**433 Susan Wheeler OAS
OPC | Rose Bradford OPC**
Printmaking



Linocuts and etchings of places and people exhibited in village between Oxford and Abingdon near the Thames footpath. 11am-6pm

115 Lower Radley
Abingdon OX14 3BA
01235 525803
susanwheelerprints.co.uk
OS|D|R|T|P

19 20 21 22 23 24 25 26 27 28

**434 Mags Cuttle
| Molly Cuttle
| John Gregory** *Various*



Three artists exhibiting in ceramics, drawing and mixed media. Pottery studio open. Make a bowl! 11-6pm (Thu/Fri 11-8, Sun 10-4)

141 Upper Road
Kennington OX1 5LR
01865 580087
f /magspottery
W|O|S|D|R|T

19 20 21 22 23 24 25 26 27 28

435 Elaine Newson WOA
Various



A vibrant & varied exhibition of glass, jewellery, textiles, mixed media & cards, set in a tranquil village location. Ample parking. 11am-6pm

Sanctuary, 32 The Field
Dry Sandford, nr Abingdon
OX13 6ED. 01865 321000
www.elainenewson.com
D|R|T|P

19 20 21 22 23 24 25 26 27 28

439 Village Art
Various



17 artists come together in a diverse dazzling dynamic exhibition. Visit Café Picasso. 10am-4.30pm

Appleton Village Hall
Oaksmere, Appleton
nr Abingdon OX13 5JS
01865 863850
moalner9@aol.com

W|D|R|P

19 20 21 22 23 24 25 26 27 28

440 Abingdon Preparatory School
Various



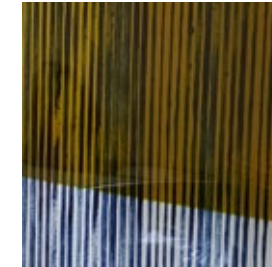
Join us for a celebration of art & design work created by students. Please contact school for public viewing times.

Abingdon Preparatory School
Josca's House, Kingston Road
Frilford nr Abingdon
OX13 5NX
01865 391570
www.abingdon.org.uk/prep/

P

19 20 21 22 23 24 25 26 27 28

441 Phillippa Stacey
Glass



Glass art, home wares and beautifully light jewellery. Workshops available too. 10am-6pm

Pear Tree Cottage
7 Packhorse Lane
Marcham OX13 6NT
07977 460919
featheredglass.com

OS|D|R|T|P

19 20 21 22 23 24 25 26 27 28

436 Sarah Bond WOA
Painting



Colourful, contemporary paintings of Oxford. Vibrant seascapes and landscapes in light bright Archangel Studio. 11am-5pm

Archangel Studio
1 Abingdon Road
Cumnor OX2 9QN
07989 393269
www.sarahbondart.com
OS|R|P

19 20 21 22 23 24 25 26 27 28

**437 Sue Side OAS WOA |
Stephanie Monteath
| David Williams WOA**
Various



Discover a world of inky tales & detailed graphite portraits; of exquisite, diaphanous textiles and naturally inspired sculptures. 11am-6pm

The Garden Studio, 39 Robsart Place, Cumnor OX2 9QT
instagram.com/sue.side_artist
01865 865139

OS|D|R|P

19 20 21 22 23 24 25 26 27 28

438 David Lockett
Painting



English and Scottish landscapes, Venetian scenes and larger abstracts based on organic forms, in oils. 11am-6pm (Thu 11-9pm)

Wayside Cottage
Eaton nr Abingdon
OX13 5PT
01865 862395

P

19 20 21 22 23 24 25 26 27 28

442 Mimie Poterie
Ceramics



Mimie Poterie is an independent ceramics studio producing tableware. 10am-6pm

Pear Tree Cottage
7 Packhorse Lane
Marcham OX13 6NT
www.mimiepoterie.com

OS|P

19 20 21 22 23 24 25 26 27 28

443 Sculpture Workshops Oxford
Sculpture



Sculptures by Beatrice Hoffman and students of 'Sculpture Workshops Oxford'. 12am-6pm (Fri 2-5pm)

Lime Tree Cottage
Garford
nr Abingdon OX13 5PF
01865 391502
www.beatricehoffman.co.uk

OS|P|NS

19 20 21 22 23 24 25 26 27 28

444 Charlotte Doolally
Various



Explore and discover your power animal in the artist's immersive psychedelic fantasia. 11am-6pm

Lavender Barn, Philberds Manor
Halls Lane
East Hanney OX12 0HJ
07798 651421
www.alottadoolally.com

W|R|P

19 20 21 22 23 24 25 26 27 28

(5-28 May)

445 Jo Marshall WOA*Ceramics*

Thrown and hand-built colourful stoneware pottery. 11am-5pm

Hare Cottage

Townsend

Grove OX12 0AX

07769 570822

www.uffingtonpotters.co.uk

W | OS | D | P

19 20 21 22 23 24 25 26 27 28

446 Catriona Brodribb**OPC***Printmaking*

Passionate about printmaking, handmade screenprints, etchings & woodcuts. 9.30am-4pm

Vale & Downland Museum

19 Church Street

Wantage OX12 8BL

01235 771447

www.catrionabrodribb.co.uk

W | D | R

19 20 21 22 23 24 25 26 27 28

447 Lin Kerr OAS WOA*Painting*

Contemporary landscape oil paintings of skies and skysongs – sunny or dramatic, large and small. 9.30am-4pm

Vale & Downland Museum

19 Church Street

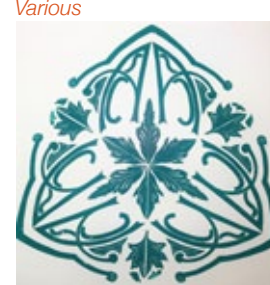
Wantage OX12 8BL

01235 771447

www.linkerrdesign.co.uk

OS | D | R | T | P (&15-18 May)

19 20 21 22 23 24 25 26 27 28

451 Ardington School of Crafts - Tutors*Various*

A selection of Ardington School of Crafts' tutors demonstrate & exhibit their diverse yet complementary arts and crafts. 11am-3pm The Old School, School Road Ardington, nr Wantage OX12 8PN. 01235 833433

www.ardingtonschool.com

W | OS | D | P

19 20 21 22 23 24 25 26 27 28

452 Artists of Letcombe*Various*

A stimulating visual variation of mixed media including textiles, painting, lighting, and glass painting. 11am-4pm

Richmond Village

Letcombe Regis

nr Wantage OX12 9RG

01235 763935

annieinlondon@mac.com

W | D | R | P

19 20 21 22 23 24 25 26 27 28

453 a+b Furniture*Furniture*

Contemporary design meets traditional craft to create beautiful handmade furniture. Pop in and browse or discuss a possible commission. 11am-4pm

Unit 7 W&G Estate

East Challow OX12 9TF

01235 412080

ab-furniture.co.uk

W | OS | P

19 20 21 22 23 24 25 26 27 28

448 Patsy Jones*Painting, Printmaking*

Paintings, prints and cards shown in a relaxed atmosphere. Enjoy a cup of tea with us while 'just looking'. 11am-6pm

8 Bryan Way

Wantage OX12 7EH

01235 764258

www.patsyjones.co.uk

19 20 21 22 23 24 25 26 27 28

449 Jill Smith*Painting, Printmaking*

Colourful linocuts & paintings in watercolour, oil & acrylic on various subjects. Framed & unframed originals & prints. 11am-6pm

8 Bryan Way

Wantage OX12 7EH

07802 873035

www.jillsmithart.co.uk

19 20 21 22 23 24 25 26 27 28

450 Jill Cooper OAS**| Joyce Coombs***Painting, Textiles*

People and places: a lively mix of subjects and styles. 12-5pm (Sat/Sun 11-6pm)

16 Larkhill

Wantage OX12 8HW

01235 762453

jillcooper@waitrose.com

W | P

19 20 21 22 23 24 25 26 27 28

454 Bill Grant**| Seija Wentworth WOA***Mixed Media, Painting*

Four exciting local artists on one site, exhibiting both traditional and contemporary works. 11am-6pm

The Vine, Mill Farm

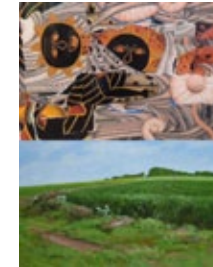
Faringdon Road

Stanford in the Vale

SN7 8NP

W | D | R | P

19 20 21 22 23 24 25 26 27 28

455 Lawrence Ward OAS**| Richard Rodrigues***Painting*

Four exciting local artists on one site, exhibiting both traditional and contemporary works. 11am-6pm

The Vine, Mill Farm

Faringdon Road,

Stanford in the Vale

SN7 8NP

W | D | R | P

19 20 21 22 23 24 25 26 27 28

456 The Garden Studio*Various*

A varied group of artists showing studio pottery, jewellery, collage art, wood works and furniture. 11am-6pm

53 High Street, Stanford in the

Vale, nr Faringdon SN7 8NQ

01367 710358

norikomacfarlane@btinternet.com

OS | D | R | P

19 20 21 22 23 24 25 26 27 28

457 Ben Drew | Sue Drew
Ceramics, Mixed Media

Large garden stoneware ceramics, mixed media and domestic pottery.
12pm-6pm
3 Church Street
Shellingford SN7 7QA
01367 710471
bendrew433@btinternet.com

W | OS | P

19 20 21 22 23 24 25 26 27 28

460 David Bage
Mixed Media, Painting

Eclectic collection of colourful, vibrant & quirky artwork & artefacts from David Bage & guests incl. his daughters Sophie & Corinna.
9am-6pm (Sat 9-4pm)
Marriots with Richard James
9 Market Place
Faringdon SN7 7HL
07469 854683
bageartgallery.com

19 20 21 22 23 24 25 26 27 28

458 White Horse Artists
Various

Please come & enjoy beautiful jewellery, ceramics, painting & photography in our wonderful barn in Pusey. Tea & cake all day.
11am-6pm (Thu/Fri 11-8pm)
West Bushey
Pusey, nr Faringdon SN7 8QE
01367 870868
courtierdutton@hotmail.com
R | P

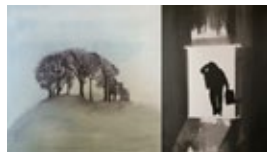
19 20 21 22 23 24 25 26 27 28

461 Great Coxwell Artists
Various

Ten artists exhibiting and demonstrating in 3 art spaces.
Lunches and teas all day.
11am-5pm
Peter's Barn Gallery
Great Coxwell
nr Faringdon SN7 7LZ
01367 241707
karen@vogt.org.uk

W | OS | D | R | P

19 20 21 22 23 24 25 26 27 28

459 Yvonne Robinson OAS
| Helen Pakeman
| Sara Withers OCG
Various

A considered collection of new work including printmaking, painting, stone-carving, collage, jewellery and ceramics.
12pm-6pm
The Reading Room, Littleworth
nr Faringdon SN7 8ED
01367 718274
yvonne-robinson-art.weebly.com

W | D | R | P

19 20 21 22 23 24 25 26 27 28

462 Sharon Rich
Sculpture

Unique, hand-carved stone sculpture exhibited in a country garden and studio.
2-5pm (Sat/Sun 11-5pm)
Henleaze Farm Bungalow
Fernham on B4508 (next to Farmer Gow's) nr Faringdon
SN7 7PR. 01793 782382
sharonrichsculpture.co.uk

W | OS | D | R | P

19 20 21 22 23 24 25 26 27 28

463 Emma Ablitt
Sculpture

A delightful exhibition of stone carvings, drawings, and paintings in a peaceful country setting.
11am-6pm
Priory Gate
Kings Lane
Longcot SN7 7SY
01793 780421
emmaablitt@aol.com

OS | R | P

19 20 21 22 23 24 25 26 27 28

466 Tara Parker-Woolway OAS
Painting

A fresh new collection of work from award winning artist in her home studio. Original paintings, prints, cards, tea & cake! All welcome
12-5pm
The Studio, 6 Church Row
Bourton, nr Shrivenham SN6 8JG
parkerwoolwayartist.co.uk
OS | R | P

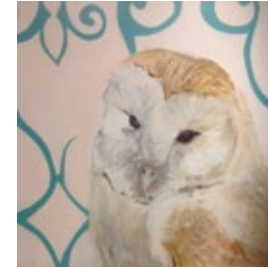
19 20 21 22 23 24 25 26 27 28

464 Pat Elmore
Sculpture

Sculpture garden and gallery with over 100 sculptures.
11am-7pm
Nutford Lodge
(next to King & Queen pub)
Longcot SN7 7TW
01793 782258
www.patelmore.co.uk

W | OS | D | R | T | P

19 20 21 22 23 24 25 26 27 28

467 Tara Parker-Woolway OAS
Painting

A stunning collection of paintings inspired by the wildlife and landscape of the local area. A warm welcome awaits in this award winning pub.
11am-11pm
The Royal Oak, Cues Lane
Bishopstone SN6 8PP
01793 790481
parkerwoolwayartist.co.uk
R | P

19 20 21 22 23 24 25 26 27 28

465 Theresa James
Painting

A colourful collection of paintings in oil and pastels. Pet portraits and wildlife. Refreshments available.
11am-5pm
Lower Barn
The Hill, Bourton
nr Shrivenham SN6 8JA
01793 780158
theresajames@aol.com
OS | R | P

19 20 21 22 23 24 25 26 27 28

468 Ushma Sargeant
Various

Colourful and textured landscapes, made using wool fibres. Picturesque village setting, unique views. Short walk from the Royal Oak.
11am-6pm
Ye Olde Forge, Hockerbench
Bishopstone SN6 8PW
07866 806289
www.fifteen2.co.uk
OS | R | P

19 20 21 22 23 24 25 26 27 28

| Index of exhibiting artists | |
|------------------------------------|---------------|
| Abbiss Stubbs, Susan | 17 |
| Ablitt, Daniel | 181 |
| Abbott, Jane | 145 |
| Abell, Suzanne | 22 |
| Ablitt, Emma | 463 |
| Acworth, Claire | 312 |
| Adlington, Kit | 338 |
| Allan, Peter | 376 |
| Allender, Elaine | 96 |
| Alder, Mo | 439 |
| Amos, Carolyn | 431 |
| Arlidge, Anne | 182 |
| Armitage, Pam | 291 |
| Arnold, Katie | 358 |
| Arnold, Kit | 357, 363 |
| Atwal, Brindi | 429 |
| Auckland, Alice | 394 |
| Audus, Hilary | 253 |
| Avery, Susan | 245 |
| Bage, Corinna | 460 |
| Bage, David | 460 |
| Bage, Sophie | 460 |
| Bainbridge, Christine E | 362 |
| Bale, Nicholas | 363 |
| Ball, Suzanne | 151 |
| Banerji, Sara | 332 |
| Bankes, Juliet | 12 |
| Barber, Jayne | 12 |
| Barnett, Caroline | 316 |
| Barrow, Teresa | 452 |
| Barry, Nathan | 150 |
| Bartlett, Gareth | 142 |
| Basilevitch, Sophie | 289 |
| Batchelor, Ann | 452 |
| Bates, Andrea | 132 |
| Baxter, Shelagh | 461 |
| Bayliss, Mandy | 12 |
| Bayton, Maeve | 360 |
| Belcher, Lee | 120 |
| Bell, Margot | 152 |
| Benfield, Valma | 142 |
| Bennett, Ginny | 141 |
| Berger, Judith | 137, 247 |
| Berger, Michael | 247 |
| Bex, Francesca | 439 |
| Bicknell, Maggie | 255 |
| Bignold, Bruce | 387 |
| Binnie, Catherine | 111 |
| Birchall, Jackie | 361 |
| Birchall, Sarah | 157 |
| Bird, Sue | 342 |
| Black, Kiki | 4 |
| Blackman, Anne | 354 |
| Blakemore, David | 142, 236 |
| Blakey, Gabriella | 137 |
| Blandy, John | 218 |
| Blenkinsop, Tessa | 175 |
| Bliss, David | 290 |
| Bloomer, Lisa | 22 |
| Boisot, Abigail | 9 |
| Bond, Amanda | 360 |
| Bond, Sarah | 436 |
| Boning, Anne | 88 |
| Boreham, Chris | 379 |
| Bosher, Michelle | 380 |
| Bosley, Jo | 131, 419 |
| Bowen, Dylan | 19 |
| Bowler, Lucy | 12 |
| Boyle, Marie | 7 |
| Bradford, Rose | 433 |
| Bradley, Jackie | 151 |
| Bray, Phoebe | 75 |
| Brittain, Simon | 316 |
| Brodrigg, Catriona | 446 |
| Brooke-Little, Merlin | 17 |
| Brooks, Adrian | 372, 377 |
| Brown, David | 7 |
| Brown, David | 31 |
| Brown, Glyn | 429 |
| Brunskill, Susanna | 408 |
| Bryant, Liz | 131 |
| Bryant, Roger | 131 |
| Buchan, Ali | 379 |
| Buckle, Alexandra | 5 |
| Bucknell, Robert | 6 |
| Bud, Henrietta | 7 |
| Burbidge, Philip | 315 |
| Burniston, Kerry | 43 |
| Burrell, Laurence | 303 |
| Butterfield, Neil | 213 |
| Buttons and Clay | 113 |
| Caban, Carlos | 195 |
| Cansell, Jill | 363 |
| Carr Garbe, Lina | 7 |
| Carruthers, Richard | 397 |
| Carruthers, Rupert | 360 |
| Cash, Martin | 431 |
| Cashman, Sue | 208 |
| Casley, Emmett | 225 |
| Castle, Sharon | 394 |
| Chadwick, Juliet | 316, 317 |
| Chafer, Miesje | 267 |
| Chappell, Caroline | 139 |
| Chappelle, Fiona | 426, 430 |
| Charles, Melanie | 169, 439 |
| Chez Beccy | 60 |
| Chilton, Elizabeth | 61 |
| Christensen, Helle | 306 |
| Christie, David | 141 |
| Churchley, Vic | 363 |
| Clay, Mark | 226 |
| Clifford, Geoff | 119 |
| Clifford, Wendy | 119 |
| Clocksins, Ella | 351 |
| Clutton-Brock, Eleanor | 99 |
| Coates, Marion | 120 |
| Cochrane, James C | 178 |
| Coker, Kate | 422 |
| Colchester, Jill | 100 |
| Coles, Gerry | 370 |
| Coles, Janice | 439 |
| Collier, Jill | 142, 151 |
| Collier, John | 148 |
| Collier, Michael | 25 |
| Collins, Marjorie | 197 |
| Collinson, Ann | 316 |
| Conway, Jackie | 340 |
| Coombs, Joyce | 450 |
| Cooper, Anita | 120, 248, 275 |
| Cooper, Jill | 450 |
| Corcutt, Peter | 300 |
| Cornwall, Sue | 394 |
| Court, Alison | 359 |
| Cowdry, Mary | 379 |
| Craddock, Inge | 253 |
| Craig, Fredrica | 17, 61 |
| Crampton, Celia | 92 |
| Crane, Jane | 112 |
| Crawford, Ann | 173 |
| Croft, Tom | 215 |
| Cross, Claire | 426, 439 |
| Cross, Janet | 207 |
| Cross, Tom | 93 |
| Crowson, Neville | 76 |
| Csecs, Gilbert | 163 |
| Csecs, Tracy | 163 |
| Cumming, Vicky | 24, 209 |
| Cummins, Helena | 101 |
| Cummins, Frankie | 292 |
| Cunningham, Briony | 429 |
| Cuttle, Mags | 434 |
| Cuttle, Molly | 434 |
| Daggitt, Steve | 25 |
| Damen, Martin | 168 |
| Danely, Robin | 343 |
| Dargay, Joyce | 7 |
| Daunt, Kate | 456 |
| Davies, Charlie | 24, 394 |
| Davies, Jane | 62 |
| Davies, Michelle | 24 |
| Davies, Tony | 429 |
| Davis, Clare | 429 |
| Davis, Emma | 316, 318 |
| Davis, Tony | 17 |
| Day Dawson, Kate | 221 |
| de Villiers, William | 228 |
| Dearlove, Valerie | 388 |
| Dennis, Laura | 151 |
| Dickens, Philippa | 84 |
| Diggle, Gillian | 384 |
| Dixon, Jo | 281 |
| Dodd, Ruth | 370 |
| Doherty, Itsuko | 62 |
| Donaldson, Melanie | 282 |
| Donnelly, Ann | 170 |
| Doolally, Charlotte | 444 |
| Dority, Sally | 22, 23 |
| Dove, Phillip | 214 |
| Dragonfly Framing | 3 |
| Drew, Ben | 457 |
| Drew, Patricia | 25, 377 |
| Drew, Sue | 457 |
| Drinkwater, Claire | 316 |
| Dromgoole, Julia | 258 |
| Ducker, Rachel | 254 |
| Duff, Jane | 385 |
| Dunford Wood, E | 143 |
| Dunkley, Janet | 370 |
| Dunn, Margaret | 452 |
| Durham, Leslie | 342 |
| Durrant, Nicola | 143 |
| Eagle, Harriet | 344 |
| Early, Genevieve | 17 |
| East, Jane | 216 |
| East, Simon | 243 |
| Eastland, Clive | 451 |
| Eccles, Anthony | 334 |
| Eccles, Shirley | 451 |
| Edwards, Carol | 102 |
| Eidenbenz, Kati | 126 |
| Elgar, Bianca | 236 |
| Ellis, Christine | 373 |
| Elmore, Pat | 464 |
| Endsor, Rosie | 368 |
| Engelhardt, Julia | 316, 335 |
| Enser, Fleur | 18 |
| Esson, Rosannagh S | 89 |
| Evans, Victoria | 155 |
| Everett, Angela | 142 |
| Eyres, Annabel | 307 |
| Fairfax-Cholmeley, R | 220 |
| Farley, Peter | 78 |
| Farrands, Robert | 329 |
| Farrell, Debbie | 374 |
| Fay, Jenny | 272 |
| Fenwick, Paul | 309 |
| Fertey-Green, C | 63 |
| Fitzgerald, Mark | 74 |
| Fletcher, Nigel | 160 |
| Floreay-Hitchcox, C | 369 |
| Fonge, Susan | 358 |
| Ford, Janet Mary | 7 |
| Forkner, Andrew | 14 |
| Forkner, Kerry | 125 |
| Foster, Kathleen | 439 |
| Foster, Louisa | 22 |
| Fotheringham, Kath | 17 |
| Fox, Richard | 46 |
| Franklin, Peter | 25 |
| Fraser, Harriet | 183 |
| Fraser, Ian | 137 |
| Fraser, Rob | 183 |
| Fraser, Siobhan | 24, 249 |
| Freeman, Patricia | 127 |
| Friedemann, Trish | 25 |
| Fulljames, Penelope | 316, 319 |
| Fyfe-Jackson, Claire | 42 |
| Fyvie, Pam | 28 |
| Ganney, Susan | 380, 381 |
| Garcia-Mier, Yvette | 22 |
| Gargas, Piotr | 64 |
| Gawne, Louise | 40 |
| Gibbs, Margaret | 103 |
| Gilbert, Penny | 22 |
| Gill, Andy | 143 |
| Gillespie, Anna | 125 |
| Glynn Jones, A | 316 |
| Goddard, Victoria | 137, 401 |
| Goode, David | 297 |
| Goodwin, Gill | 380 |
| Gosling, Yvonne | 24 |
| Grant, Bill | 454 |
| Grant, Hugh | 11 |
| Gratwicke, Brenda | 24 |
| Gray, Coleen | 452 |
| Green, Christine | 368 |

| | | | | | | | | | | | |
|-------------------------|---------------|----------------------|----------|----------------------|----------|--------------------|----------|---------------------|----------|-----------------------|----------|
| Green, Diana | 88 | Henwood, Colin | 379 | James, Trudi | 431 | Lancaster, Peter | 409 | Marchant, Sarah | 384 | Newhofer, Frank | 260 |
| Green, Jill | 316 | Heppell, Neil | 24 | Jaquet, Cherry | 24 | Landreth, Ruth | 429 | Marcus, Annia | 137 | Newhofer, Wendy | 261 |
| Greene, Laura | 311 | Hess, Edward | 363 | Jay, Emma | 48 | Lathar, Kamal | 54 | Marriott, Caroline | 131 | Newman, Jennifer | 50 |
| Greene, Michele | 7 | Hill, Susan | 431 | Jay, Rebekah | 24 | Laube, Laura | 316, 322 | Marshall, Jo | 445 | Newson, Elaine | 435 |
| Greenham, Gillian | 65 | Hine, Susan | 439 | Jeff, Cathryn | 120, 121 | Lawrence, Peter | 189 | Marsland, Ken | 25 | Newton, Sally | 458 |
| Gregory, John | 434 | Hipkiss, Kate | 224 | Jeffrey, Jill | 135 | Lawson, Briony | 182 | Mazz Image | 353 | Nicholson, Tuula | 70 |
| Griffiths, Eirian | 380 | Hirsch, Vicky | 234 | Jenkin, Annie | 461 | Lea, Barnaby | 87 | McAdam, Maggie | 429 | Noble, Cat | 309 |
| Grose, Julie | 380, 398 | Hislop, Amanda | 187 | Jennison, Netta | 342 | Lebedeva, Milena | 206 | McClelland, Robin | 371 | Nolan, Vicky | 377 |
| Guest, Richard | 26 | Hobson, Stephanie | 25 | Joekes, John | 94 | Lemaitre, André | 270 | McCormack, Sheena | 151 | Norris, Dana | 324 |
| Gulliver, Sian | 429 | Hoelt, Sandra | 316, 321 | John, Tamsin | 378 | Lerwill, Donae | 390 | McEwen, Gretel | 429 | Norris, Philippa | 327 |
| Gussin, Judith | 38, 137 | Hoffman, Beatrice | 15, 443 | Johnson, Bernard | 129 | Lester, Graham | 137 | McNamee, Kay | 431 | North, William | 13 |
| Hailstone, John | 389 | Hogg, Ali | 227 | Johnson, Gabriele | 431 | Lester, Karen | 12 | Mead, Valerie | 283 | O'Connor, Marieke | 341, 342 |
| Hainsworth, Jane | 198 | Hogg, Jane | 227 | Johnson, Tlws | 137 | Levene, Tamsin | 146 | Meara, Rosemary | 25 | O'Donnell, Viv | 146 |
| Hallam, Martin | 104 | Holland, Ann | 25 | Jones, Alison | 431 | Lever, Anna | 69 | Megaw, Harry | 403 | Oliver, Joanna | 360 |
| Hamand, Mike | 186 | Holloway, Elaine | 91 | Jones, Patsy | 439, 448 | Lever, Ticia | 38, 137 | Meinhold-Morgan, H | 44 | Opher, Anna | 284 |
| Hamill, Nathalie | 253, 422 | Holmans, Alison | 33 | Jones, Sue | 7 | Levitch, Sue | 141 | Messenger, Alex | 38 | Orrom Swan, Melissa | 366 |
| Hamilton, James | 25 | Hope, Jane | 302 | Jones, Yvonne L | 206 | Lewis, Gareth | 379 | Messer, Ken | 406 | Orrom, Kari | 357 |
| Hammond, Judith | 12 | Hopkins, Su | 105 | Jose, Phil | 380 | Lewis, Nick | 37 | Metcalfe, Edward | 377 | O'Sullivan, Christine | 316 |
| Hanson, Jane | 137, 253, 359 | Hornsby, Julie | 429 | Judge, Elizabeth | 117 | Leyland, Daniel | 402 | Metcalfe, Mari | 377 | Owen, Marion | 426 |
| Haq, Shamina | 451 | Horton, Margaret | 426 | Kantorowicz, Nicola | 131 | Lindner, Walter | pg11 | Meynell, Caroline | 188 | Owen, Clare | 383 |
| Harben, Caroline | 316, 320 | Houghton, Claire | 375 | Karatzios, Sarah | 25 | Lines, Jenny | 43 | Miller, Miranda | 234 | Page, Debbie | 451 |
| Hardyman, Robyn | 345 | Houlihan, Charlotte | 411 | Kazimierzuk, Elaine | 235, 309 | Linton, Liz | 137, 253 | Milroy, James | 184 | Pakeman, Helen | 459 |
| Harris, Judy | 431 | Howard, Debbie | 55 | Kenner, Rahima | 326 | Lloyd, Anthony | 118 | Mimie Poterie | 442 | Palmer, Guen | 80, 203 |
| Harrison Caban, Barbara | 194 | Howarth, Roy | 196 | Kerr, Lin | 407, 447 | Lockett, David | 438 | Mira, Dolores V | 311 | Parker, Freda | 129 |
| Harrison, Andrew | 56, 137 | Huddleston, John | 201 | Kettlewell, Jo | 146 | Loken, Julia | 32 | Mitchell, Polly | 263 | Parker, Jessica | 57 |
| Harrison, Lyn | 131, 419 | Hughes, Val | 461 | Kettlewell, Sarah | 146 | Lord, Karen | 109 | Mitchell, Steve | 109 | Parker-Woolway, T | 466, 467 |
| Hartley, Lucy | 262 | Hugill, Enid | 142 | Kiki Black Studio | 4 | Lowe, J B | 367 | Moisy, Nathalie | 309 | Parrey, John | 399 |
| Harvey, Carol | 140 | Humphrey, Megan | 429 | Kilroe, Janine | 316 | Lowry, Mary | 202 | Mole, Adeliza | 309 | Parsons, Nicki | 231 |
| Harvey, Deborah | 363 | Hunter, Heather | 355 | Kimminau-Jobling, S | 7 | Loxton, Ronny | 159 | Mollison, Jane | 257 | Paton, Becky | 360 |
| Harvey, Helen | 439 | Hurst, Lizzie | 250 | King, David | 142 | Lyne, Ruth | 165 | Moncrieff, Sarah | 41 | Pawlyn, Angela | 451 |
| Harvey, Jan | 85, 380 | Hutchens, Simon | 429 | King, Heather | 65 | Lyons, Sue | 315 | Monteath, Stephanie | 437 | Paylor, David | 299 |
| Hashmi, Asma | 120, 309 | Hutton, Ruby | 396 | King, Nicko | 368 | M&A Electricals | 452 | Moore, Grenville | 136 | Payne, Barbara | 431 |
| Haxworth, Jenny | 128 | Ibsen, Antoinette | 237 | King, Timothy | 360 | Maas, Caroline | 308 | Morecroft, Karen | 349 | Payne, Judith | 392 |
| Haynes, Phill | 429 | Image, Mazz | 353 | Kingsley-Bates, R | 146 | Macdonald, Anne | 24 | Morgans, Becky | 259 | Peeters, Vital | 199 |
| Haynes, John | 58 | Impey (Family) | 428 | Kirkham, Elizabeth | 25 | Macfarlane, Jamie | 456 | Morris, Alison | 211 | Peever, Alec | 45 |
| Hayward-Harris, M | 404 | Irigoyen Zozaya, S I | 461 | Knight, Bunt | 421 | Macfarlane, Noriko | 456 | Morton, Chrissy | 456 | Peever, Fiona | 45 |
| Hazelden, Andrew | 30 | Irvine, Kate | 146 | Knight, Tom | 421 | Mackay, Jon | 113 | Moser, Jane | 212 | Pennink, Adrian | 360 |
| Hazell, John | 360 | Irving, Rodas | 379 | Knight-Benjafield, G | 2 | Mackintosh Sim, G | 29 | Motion, Lucie | 415 | Perryman, Graham | 3 |
| Hehir, Alison | 268 | Isaacson, Kassandra | 193 | Knowland, Isabel | 95 | Maish, Bill | 377 | Moxley, Susan | 177, 432 | Petts, Valerie | 251 |
| Hellon, Katie | 47 | Jackman, James | 130 | Knowland, Mary | 96 | Makin, Kate | 458 | Munby, Teresa | 24, 269 | Phelan, Philippa | 113 |
| Helm, Susie | 73 | Jackson, Jeanne | 365 | Kravchenko, Xenia | 309 | Malden, Josephine | 221 | Murphy, Paul | 154 | Phillips, Jane | 102 |
| Hendy, Ella | 164 | James, Emma | 429 | Laidlaw, Deborah | 346 | Mann, Lis | 142 | Naidoo, Nimmi | 49 | Phillips, Yvette | 412 |
| Henshaw, Elena | 309 | James, Theresa | 465 | Lancaster, Allan | 452 | Marcelle, Cinthia | 279 | Nairne Townsend, M | 461 | Phipps, David | 25 |

| | | | | | | | | | | | |
|---------------------|-----|--------------------------|----------|----------------------|----------|-----------------------|----------|-----------------------|----------|----------------|-----|
| Phipps, Rosie | 200 | Rowlands, Judith | 431 | Smith, Amanda | 38, 439 | Tennyson, Lucy | 217 | Wattam, Lula | 228 | Wykes, Jean | 25 |
| Pigott, Isobel | 405 | Roxburgh, Ian | 360 | Smith, Fiona | 146 | Teper, Danielle | 25 | Webb, Denny | 380, 382 | Wynn, Brenda | 456 |
| Pilgrim, Lynn | 25 | Rudge, Caroline | 97 | Smith, Gordon | 370 | Tetzner, Roberta | 405 | Webster, Jo | 461 | Yeend, Albee | 458 |
| Piriou, Annik | 252 | Ryan, Susan | 106 | Smith, Jenny | 431 | Thomas, Ann | 142 | Weinstock, Sue | 210 | Young, Helen J | 410 |
| Plows, Rebecca | 311 | Sabali Pots, Helen | 394 | Smith, Jill | 439, 449 | Thompson, Andrew | 2 | Wentworth, Seija | 454 | Yuan, Lihua | 223 |
| Plunket, Caroline | 360 | Sabin, Jonquil | 143 | Smith, Martin | 191, 347 | Thompson, Marc | 301 | West, Malcolm | 405 | | |
| Pollock, David | 471 | Sabogal, Patricia | 179, 180 | Smith, Sarah | 158 | Thompson, Sophie | 87 | Westerman, Linda | 142 | | |
| Porter, Rosalyn | 342 | Sadler, Claire Christie | 190 | Sonsino, Simon | 451 | Thomson, Tony | 256 | Wheatley, Bridget | 298 | | |
| Powell, Claire | 66 | Sainsbury, Diana | 107 | Soskice, Alison | 342 | Thorn, Nick | 439 | Wheeler, Gemma | 131 | | |
| Pratley, Tammy | 115 | Salmon, Jo | 229 | Southon, Rosie | 377 | Thornton, Christine | 111, 253 | Wheeler, Susan | 433 | | |
| Preece, Christopher | 151 | Sanders, Martin | 134 | Spackman, Sarah | 285 | Thorpe, Robert | 461 | White, Eric | 34 | | |
| Pretorius, Dirk | 63 | Sargeant, Ushma | 468 | Sparling, Maureen | 114 | Thwaites, Janice | 123 | White, Gill | 12 | | |
| Proudfoot, Penelope | 311 | Sarkar, Amanda | 68 | Spencer, Ann | 401 | Tinkermade | 380 | White, Helen | 232, 234 | | |
| Pulker, Christine | 370 | Savage, Annie | 7 | Spencer, Sally | 431 | Townsend, Christopher | 80 | Whitehead, Flick | 386 | | |
| Pulker, Sophie | 370 | Sayell, Wig | 309 | Squires, Victoria | 394 | Tremaine, Dawn | 7 | Whittington, Gilly | 348 | | |
| Pulvertaft, Sarah | 110 | Schaumloeffel, Silvi | 79 | Stacey, Phillipa | 441 | Tucker, John | 120 | Whyte, Jenny | 370 | | |
| Purple, Karen | 51 | Schofield, Frances | 363 | Stammers, Isolde | 458 | Tucker, Rosemary | 25 | Wiggall, Martin | 370 | | |
| Quon, Margaret | 336 | Scott, Neil | 379 | Stanbridge, Nik | 72 | Tucker, Sue | 120 | Wildman, Andrew | 138 | | |
| Radbone, Jacky | 98 | Searby, Louise | 83 | Stapleton, Jackie | 142 | Turnbull, Kate | 1 | Wilkinson, Jan | 142 | | |
| Radcliffe, Angela | 67 | Self, Jonathan | 293 | Stephen, John | 393, 431 | Turner, David | 143 | Willberg, Joy | 7 | | |
| Ramos, Benedict | 20 | Shadbolt, Cally | 313 | Stephens, Richard | 25 | Turner, Katherine | 352 | Williams, Ben | 124 | | |
| Ranson, Alison | 151 | Shakespeare, Francesca | 176 | Stewart Liberty, S | 377, 378 | Turner, Lisa | 439 | Williams, Bridget | 185 | | |
| Reade, Mary | 420 | Shannon-Little, E | 228 | Stiles, Kieran | 39 | Turner, Louisa | 22 | Williams, David | 437 | | |
| Rebekha Jay | 24 | Shapley, Roger | 162 | Stillwell, Jane | 143 | Turner, Sue | 71 | Williams, Deborah | 233, 234 | | |
| Redhead, Rosie | 370 | Shaw, Barbara | 16 | Stokes, Gordon | 286 | Twisted Root, Fi | 360 | Williams, Frances | 69 | | |
| Redman, Philippa | 331 | Shaw, Kathy | 360 | Stone, Amanda | 137 | Tyson, Noreen | 360 | Williams, Lesley | 69 | | |
| Reilly, Julie | 21 | Shepherd, Louise | 392 | Storrs, Charlotte | 423 | Varley, Penny | 142, 439 | Williams, Sharon | 86 | | |
| Renfrew, Kay | 295 | Shepherd, Marie | 182, 316 | Stradling, John | 360 | Vogt, Karen | 461 | Wilson, Robin | 220 | | |
| Restore Banbury | 166 | Shepherd, Tim | 25 | Strange, Robert | 417, 424 | Wafer, Jane | 53 | Wilson, Teresa | 151 | | |
| Reynolds, Jessica | 391 | Sherlaw-Johnson, Rachael | 43 | Strother, Jane | 350 | Waite, Helen | 439 | Wilson, Wendy A | 116 | | |
| Rich, Sharon | 462 | Sherlaw-Johnson, Rebecca | 43 | Studdert, Elizabeth | 7 | Waite, Maurice | 439 | Wimbury, Jane | 167 | | |
| Richards, Jackie | 221 | Sherwood, Howard | 439 | Summers, Bob | 238 | Waldmann, Judie | 192 | Wimpenny, Jo | 380 | | |
| Richens, Karena | 391 | Shock, Richard | 205 | Summers, Louise | 238 | Walker, Alice | 131 | Winfield, Claire | 161 | | |
| Ritson, Caroline | 431 | Shock, Katherine | 204 | Surman, Amy | 342 | Walker, Andrew J | 234 | Winthorpe Kendrick, H | 418 | | |
| Roberts, Prinkie | 314 | Shrimpton, Peter | 36 | Sutcliffe, Lucy | 429 | Wallace, Rose | 316, 323 | Wise, Rosemary | 360 | | |
| Roberts, Susan | 360 | Shuckburgh, Pip | 59, 68 | Tacq, Christine | 355 | Wallington, Michele | 77 | Withers, Sara | 439, 460 | | |
| Robertson, Sarah | 151 | Side, Sue | 437 | Tams, Mizue | 120 | Ward Shanks, Pamela | 452, 461 | Wong, Eleanor | 414 | | |
| Robinson, Jim | 288 | Sieber, Vivien | 339 | Tancock, Angela | 439 | Ward, Lawrence | 455 | Woods, Rachel | 182 | | |
| Robinson, Yvonne | 459 | Simmons, Anya | 171 | Taylor, George | 123 | Warren, Judith | 151 | Woolner, Helen | 153 | | |
| Robinson-Spoon, H | 384 | Simpson, Dougie | 425, 426 | Taylor, Crabby | 52 | Washbrook, Angela | 342 | Woolstone, Polly | 38, 131 | | |
| Rodrigues, Richard | 455 | Skertchly, Oliver | 294 | Taylor, Boho Designs | 456 | Waterhouse, Mick | 7 | Wootton, Annie | 237 | | |
| Rose, Vikki | 380 | Skinner Smith, Wendy | 230 | Teall, Liz | 253 | Watkins, Tommy | 241 | Wright, Suzy | 35 | | |
| Rothero, Chris | 7 | Smart, Adrian | 413 | Tennent, Bridget | 120, 253 | Watt, Kenneth | 324 | Wyatt, Sally | 82 | | |

Galleries & business exhibitions

| | |
|---|-------|
| a+b furniture | 453 |
| Art at Cool Contours | 172 |
| Bates and Lambourne | 356 |
| Broad Canvas | 276 |
| Burford Affordable Art Gallery | 81 |
| Cornerstone Arts Centre | 416 |
| Maison Française d'Oxford | 270 |
| Oxford Printmakers Co-operative | 330 |
| Painting For Freedom | 242 |
| Sarah Wiseman Gallery | 181 |
| Sculpture at Kingham Lodge | 90 |
| SOTA Gallery | 56 |
| Sylva Foundation Wood Centre | 379 |
| The Heseltine Gallery | 174 |
| The Jam Factory | 239 |
| The Oxfordshire Museum | 38 |
| The People's Gallery Chipping Norton | 133 |
| The Turrill Sculpture Garden | 182 |
| The North Wall Arts Centre | 183 |
| Twist | 15 |
| Upton Pottery | 83 |
| Walter Lindner (Berlin) - A Retrospective | pg 11 |
| Wychwood Art Gallery | 147 |

Group exhibitions

| | |
|-------------------------------------|-----|
| 10 Potters | 253 |
| 6 at Tyte Tap House | 143 |
| All Saints Artists | 394 |
| Ardington School of Crafts - Tutors | 451 |
| Art @ Earth Trust | 380 |
| Art at Chalgrove Church | 370 |
| Art at Holy Cross | 24 |
| Art at St Andrew's | 342 |
| Art at The Manor | 363 |
| Art More Lovely | 17 |
| Artists at St Mary's | 25 |
| Artists of Letcombe | 452 |
| Bicester Sculpture Group | 7 |
| Dorchester Artists | 377 |
| Emmanuel Christian School | 293 |
| Great Coxwell Artists | 461 |
| Great Rollright's Art in Action | 142 |
| Greenhill Farm Art Studio | 22 |
| Grey Cat Studio | 43 |
| Holcombe Barn | 146 |
| King's Sutton Collective | 151 |
| Magdalen Road Artist Studios | 309 |
| Mixed Bag | 12 |
| One of a Kind | 131 |
| OutlineVine | 311 |
| Oxfordshire Craft Guild | 137 |
| Peach Croft Barn Artists | 431 |
| Pop Up Artists Collective | 429 |
| SJE Arts Cloister Gallery | 316 |
| St Mary's Church Group | 120 |
| Sylva Foundation Wood Centre | 379 |
| The Abbey Group | 426 |
| The Garden Studio | 456 |
| The Otmoor Collective | 360 |
| Village Art | 439 |
| White Horse Artists | 458 |
| wocART | 234 |

Non-selling exhibitions

| | |
|---------------------------------|-----|
| Abingdon Preparatory School | 440 |
| Alliance Française d'Oxford | 266 |
| Another You Life Coaching | 219 |
| Art Studio Jericho | 246 |
| Artworks | 304 |
| Sculpture Workshops Oxford | 443 |
| Bicester Art Club | 10 |
| Bloxham Baptist Church | 155 |
| Bloxham School | 156 |
| Bowls and Scrolls | 244 |
| Campfield House IRC | 277 |
| Charlbury Pre-school | 122 |
| Creative Voice Project | 108 |
| Dept Physics, Oxford Uni | 273 |
| Everyone's An Artist | 395 |
| Fairtrade at St Michaels | 278 |
| FoWL Art & Craft | 364 |
| Katharine House Hospice | 149 |
| Kidlington Camera Club | 27 |
| Louie Memorial Pavilion | 222 |
| Lucy Tennyson & Friends | 217 |
| Magdalen Road Church | 310 |
| Modern Art Oxford | 279 |
| Neolithic Echoes | 144 |
| OutlineVine | 311 |
| OVADA | 240 |
| Oxford Brookes | 337 |
| Oxford Ikebana Study Group | 265 |
| Oxford Photographers | 271 |
| Oxfordshire Assoc For The Blind | 292 |
| Oxfordshire Mind | 427 |
| OYAP Trust | 8 |
| Restore Banbury | 166 |
| River & Rowing Museum | 400 |
| Ruby Hutton | 396 |
| South Oxford Community Assoc | 287 |
| SS Philip & James Primary | 264 |

| | |
|---------------------------------|-----|
| St Clement's Church | 333 |
| St Edmund Hall | 274 |
| St Mary & St John Primary | 305 |
| St Matthew's Church & Community | 280 |
| Stanford University | 328 |
| Watt and Norris Conservation | 324 |

Non-exhibiting members

| |
|----------------------|
| Beatson Wood, Angela |
| Cherry, Rosie |
| de Mauny, Lucienne |
| Dillon, Anna |
| Frank, Dianne |
| Gannon, Melanie |
| Harcourt, Geoffrey |
| Ifill, Julie |
| Jane, Tomlinson |
| Lewis, Marion |
| Moor, Malcolm |
| Nolan, Pauline |
| Sexton, Gerard |
| Shearsby, Beth |
| Strachan, Susan |
| Todd, Wendy |
| Von Stumm, Johannes |
| Wilkinson, Patricia |
| Woolley, Susan |

5 @ 369

Art & craft
to adorn & use

Silver
Textiles
Jewellery
Painting
Wood

Sites 201-5
12-20 May, 11am-6pm
369 Woodstock Road, Oxford







 **TURRILL**
SCULPTURE GARDEN

Contemporary sculpture in a peaceful garden setting freely open to the public. Changing displays of work for sale by local, national and international sculptors.

- **Yellow: Spring at the Turrill** until 28 April
- **Oxfordshire Artweeks: with tribute to ceramicist Christine Burgess** 5-26 May
- **The Art of Movement: kinetic sculpture by Richard Cresswell** 7 July - 29 September

Find us through Summertown Library, South Parade, Oxford OX2 7JN
Open Mon & Fri 9:30am-5:00pm; Tues & Thurs 9:30am-6:30pm;
Sat 9:00am-4:00pm (Closed Sun & Wed)

www.turrillsculpturegarden.org.uk

